

SCUBY EIGHT DEPARTURE

FORT MYERS, FLORIDA

**TOP ALTITUDE:
3000**

RADAR required.

★ FORT MYERS DEP CON
124.125 371.85
MIAMI CENTER
134.75 322.5
D-ATIS
124.65
CLNC DEL
132.075
GND CON
121.9 257.8
★ FORT MYERS TOWER
128.75 (CTAF) 257.8

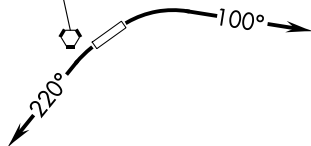
ST. PETERSBURG
116.4 PIE :--
Chan 111

ORLANDO
112.2 ORL :--
Chan 59

LAKELAND
116.0 LAL :--
Chan 107

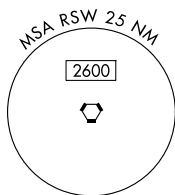
SARASOTA
117.0 SRQ :--
Chan 117

LEE COUNTY
114.15 RSW :--
Chan 88(Y)



TAKEOFF MINIMUMS
Rwy 6, 24: Standard.

KEY WEST
113.5 EYW :--
Chan 82



NOTE: Chart not to scale.



DEPARTURE ROUTE DESCRIPTION

TAKEOFF RUNWAY 6: Climbing right turn heading 100° or as assigned for vectors to join filed route, thence. . . .

TAKEOFF RUNWAY 24: Climbing left turn heading 220° or as assigned for vectors to join filed route, thence. . . .

. . . .all aircraft maintain 3000 or assigned altitude. Expect further clearance to filed altitude within 10 minutes after departure.

SCUBY EIGHT DEPARTURE