

WAAS CH 97707 W12A	APP CRS 119°	Rwy Idg TDZE Apt Elev	5500 2431 2432
--	------------------------	-----------------------------	---

RNAV (GPS) RWY 12

CALDWELL EXEC (EUL)

RNP APCH-GPS.

Procedure NA at night. Rwy 12 helicopter visibility reduction below 1 SM NA.

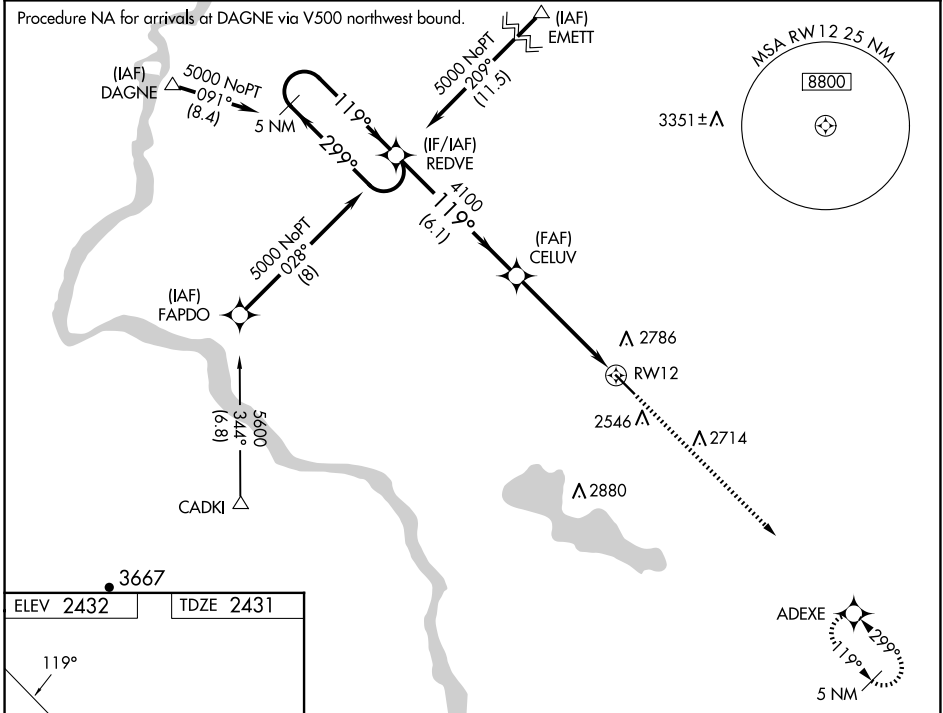
Baro-VNAV NA when using Boise altimeter setting. For uncompensated Baro-VNAV systems, LNAV/VNAV NA below -19°C or above 44°C. When local altimeter setting not received, use Boise altimeter setting and increase all DA/MDA 120 feet and all visibilities ½ mile.

MISSED APPROACH: Climb to 5000 direct ADEXE and hold.

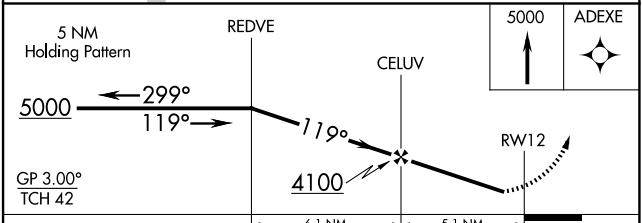
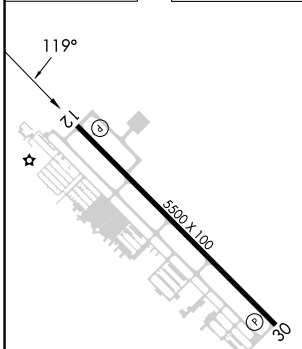
AWOS-3PT
135.075

BIG SKY APP CON
119.6 269.4

UNICOM
123.0 (CTAF) 0



ELEV 2432 TDZE 2431



CATEGORY	A	B	C	D
LPV DA	2700-1 269 (300-1)			
LNAV/VNAV DA	2994-2 563 (600-2)			
LNAV MDA	2840-1	409 (500-1)	2840-1½	409 (500-1½)

NW-1, 20 MAR 2025 to 17 APR 2025

NW-1, 20 MAR 2025 to 17 APR 2025