

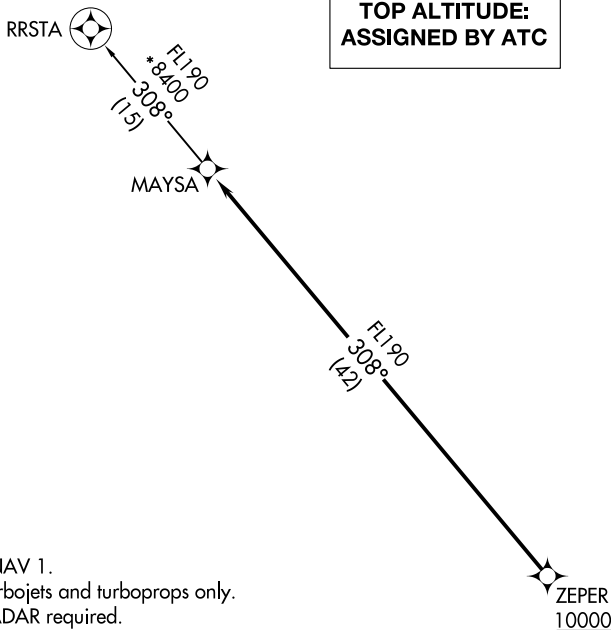
(MAYSA7.MAYSA) 24249

MAYSA SEVEN DEPARTURE (RNAV) AL-6915 (FAA)

GLENDALE RGNL (G<sup>E</sup>U)  
GLENDALE, ARIZONA

**TOP ALTITUDE:  
ASSIGNED BY ATC**

ATIS  
119.425  
GND CON  
118.0  
GLENDALE TOWER\*  
121.0  
LUKE DEP CON\*  
118.15 363.125  
PHOENIX DEP CON  
120.7 239.0

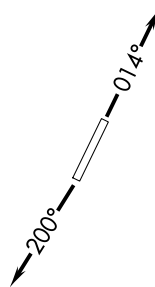


- NOTE: RNAV 1.
- NOTE: Turbojets and turboprops only.
- NOTE: RADAR required.
- NOTE: GPS required.
- NOTE: Aircraft departing KGEU and KGYR ATC assigned only. Do not file.

TAKEOFF MINIMUMS

Rwys 1, 19: Standard.

NOTE: Chart not to scale.



**DEPARTURE ROUTE DESCRIPTION**

TAKEOFF RUNWAY 1: Climb on heading 014° or as assigned by ATC, thence. . .

TAKEOFF RUNWAY 19: Climb on heading 200° or as assigned by ATC, thence. . .

. . . expect RADAR vectors to cross ZEPER at or above 10000, then on track 308° to MAYSA, then on RRSTA TRANSITION. Maintain ATC assigned altitude, expect filed altitude 3 minutes after departure.

RRSTA TRANSITION (MAYSA7.RRSTA)

MAYSA SEVEN DEPARTURE (RNAV)

(MAYSA7.MAYSA) 21MAY20

GLENDALE, ARIZONA  
GLENDALE RGNL (G<sup>E</sup>U)

SW-4, 20 MAR 2025 to 17 APR 2025

SW-4, 20 MAR 2025 to 17 APR 2025