

| | | | |
|--|------------------------|-----------------------------|---|
| WAAS CH 90306 W01A | APP CRS 014° | Rwy Idg TDZE Apt Elev | 6279 1049 1071 |
|--|------------------------|-----------------------------|---|

RNAV (GPS) RWY 1

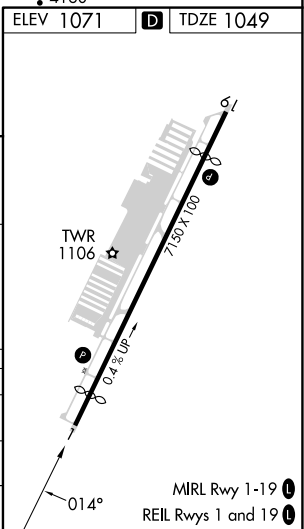
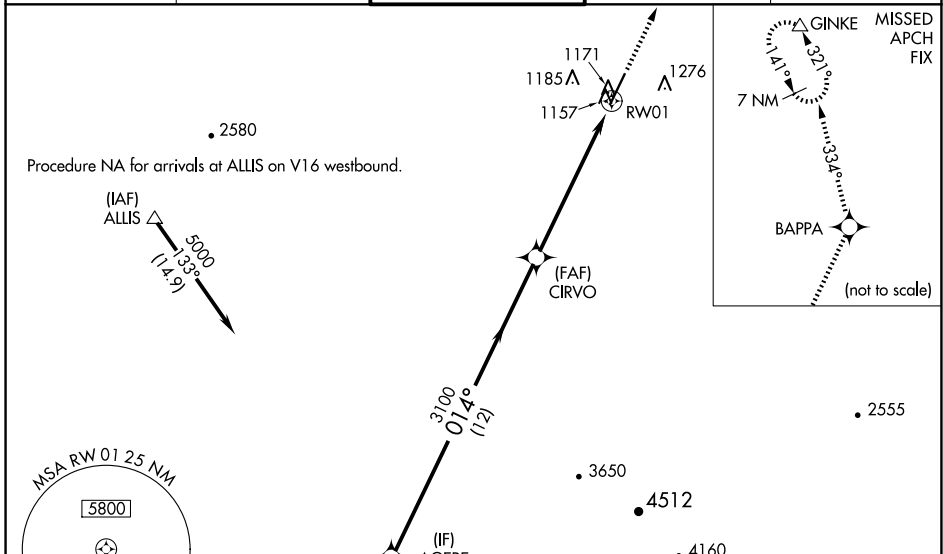
GLENDALE RGNL (GEU)

RNP APCH.

⚠ Baro-VNAV NA when using Phoenix Sky Harbor Intl altimeter setting. For uncompensated Baro-VNAV systems, LNAV/VNAV NA below -17°C or above 47°C. When local altimeter setting not received, use Phoenix Sky Harbor Intl altimeter setting; increase LPV DA to 1438 feet; increase LNAV/VNAV DA to 1517 feet and all visibilities ¼ SM; increase all MDA 60 feet and LNAV Cat C and D visibility ¼ SM. Night landing: Rwy 1, Cat C and D operational VGSIs required, remain on or above VGSIs glidepath until threshold. Rwy 1 helicopter visibility reduction below ¾ SM NA.

MISSED APPROACH: Climb to 10000 direct BAPPA and on 334° track to GINKE and hold, continue climb-in-hold to 10000.

| | | | | |
|------------------------|---|---|-------------------------|-------------------------|
| ATIS 119.425 | LUKE APP CON * 118.15 363.125 | GLENDALE TOWER * 121.0 (CTAF) 0 | GND CON 118.0 | UNICOM 122.95 |
|------------------------|---|---|-------------------------|-------------------------|



| | | | | |
|-------------------|---------|-------------|--------------|--------------|
| Procedure Turn NA | AGERE | 10000 | BAPPA | GINKE |
| | | ↑ | ✧ | 334° tr △ |
| 5000 | 014° | CIRVO | RWY 1 | |
| GP 3.00° | 3100 | | | |
| TCH 40 | 12 NM | 6.2 NM | | |
| CATEGORY | A | B | C | D |
| LPV DA | 1378-1¼ | | 329 (400-1¼) | |
| LNAV/VNAV DA | 1457-1½ | | 408 (400-1½) | |
| LNAV MDA | 1440-1 | 391 (400-1) | 1440-1⅛ | 1440-1¼ |
| | | | 391 (400-1⅛) | 391 (400-1¼) |

SW-4, 20 MAR 2025 to 17 APR 2025

SW-4, 20 MAR 2025 to 17 APR 2025