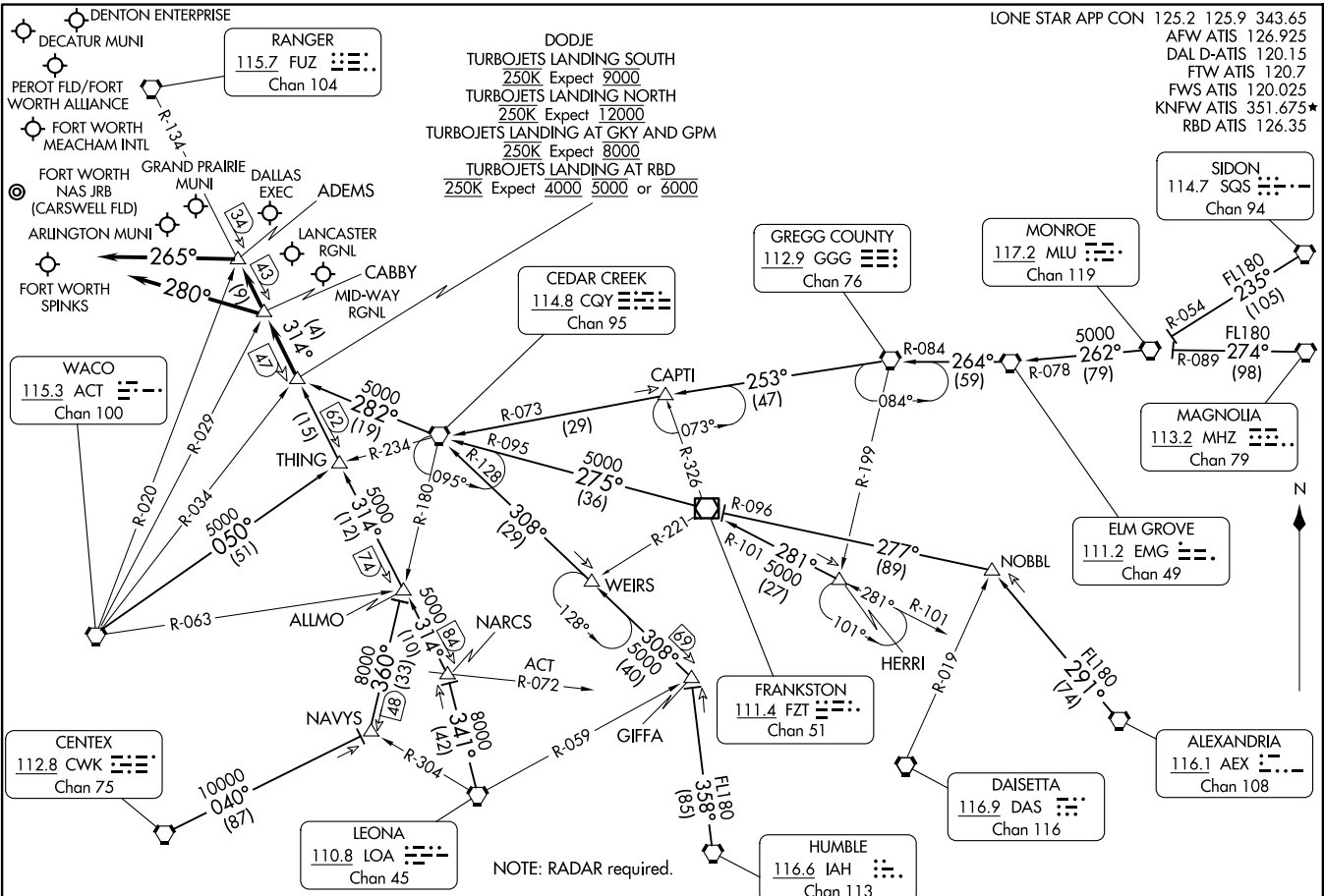


DODDIE SIX ARRIVAL
(DODJIE:DODJIE6) 21MAY20

DALLAS-FORT WORTH, TEXAS



NOTE: Chart not to scale

NOTE: RADAR required.

(CONTINUED ON FOLLOWING PAGE)

(DODJIE:DODJIE6) 24305
DODDIE SIX ARRIVAL

DALLAS-FORT WORTH, TEXAS

AL-6918 (FAA)

LONE STAR APP CON

125.2	125.9	343.65
AFW ATIS	126.925	
DAL D-ATIS	120.15	
FTW ATIS	120.7	
FWS ATIS	120.025	
KNFW ATIS	351.675*	
RBD ATIS	126.35	

ARRIVAL ROUTE DESCRIPTION

ALEXANDRIA TRANSITION (AEX.DODJE6): From over AEX VORTAC on AEX R-291 to NOBBL, then on FZT R-096 to FZT VOR/DME, then on FZT R-275 and CQY R-095 to CQY VORTAC, then on CQY R-282 to DODJE. Thence

CEDAR CREEK TRANSITION (CGY.DODJE6): From over CQY VORTAC on CQY R-282 to DODJE. Thence. . . .

CENTEX TRANSITION (CWK.DODJE6): From over CWK VORTAC on CWK R-040 to NAVYS, then on CQY R-180 to ALLMO, then on FUZ R-134 to DODJE. Thence

ELM GROVE TRANSITION (EMG.DODJE6): From over EMG VORTAC on EMG R-264 and GGG R-084 to GGG VORTAC, then on GGG R-253 and CQY R-073 to CAPTI, then on CQY R-073 to CQY VORTAC, then on CQY R-282 to DODJE. Thence

GREGG COUNTY TRANSITION (GGG.DODJE6): From over GGG VORTAC on GGG R-253 and CQY R-073 to CAPTI, then on CQY R-073 to CQY VORTAC, then on CQY R-282 to DODJE. Thence

HERRI TRANSITION (HERRI.DODJE6): From over HERRI on FZT R-101 to FZT VOR/DME, then on FZT R-275 and CQY R-095 to CQY VORTAC, then on CQY R-282 to DODJE. Thence

HUMBLE TRANSITION (IAH.DODJE6): From over IAH VORTAC on IAH R-358 to GIFFA, then on CQY R-128 to CQY VORTAC, then on CQY R-282 to DODJE. Thence

LEONA TRANSITION (LOA.DODJE6): From over LOA VORTAC on LOA R-341 to NARCS, then on FUZ R-134 to DODJE. Thence

MAGNOLIA TRANSITION (MHZ.DODJE6): From over MHZ VORTAC on MHZ R-274 and MLU R-089 to MLU VORTAC, then on MLU R-262 and EMG R-078 to EMG VORTAC, then on EMG R-264 and GGG R-084 to GGG VORTAC, then on GGG R-253 and CQY R-073 to CAPTI, then on CQY R-073 to CQY VORTAC, then on CQY R-282 to DODJE. Thence

MONROE TRANSITION (MLU.DODJE6): From over MLU VORTAC on MLU R-262 and EMG R-078 to EMG VORTAC, then on EMG R-264 and GGG R-084 to GGG VORTAC, then on GGG R-253 and CQY R-073 to CAPTI, then on CQY R-073 to CQY VORTAC, then on CQY R-282 to DODJE. Thence

NAVYS TRANSITION (NAVYS.DODJE6): From over NAVYS on CQY R-180 to ALLMO, then on FUZ R-134 to DODJE. Thence

SIDON TRANSITION (SQS.DODJE6): From over SQS VORTAC on SQS R-235 and MLU R-054 to MLU VORTAC, then on MLU R-262 and EMG R-078 to EMG VORTAC, then on EMG R-264 and GGG R-084 to GGG VORTAC, then on GGG R-253 and CQY R-073 to CAPTI, then on CQY R-073 to CQY VORTAC, then on CQY R-282 to DODJE. Thence

WACO TRANSITION (ACT.DODJE6): From over ACT VORTAC on ACT R-050 and CQY R-234 to THING, then on FUZ R-134 to DODJE. Thence

. . . . from over DODJE on FUZ R-134 to CABBY or ADEMS (when directed by ATC).
Depart CABBY heading 280°. Expect RADAR vectors to final approach course.
Depart ADEMS heading 265°. Expect RADAR vectors to final approach course.

SC-2, 20 MAR 2025 to 17 APR 2025

SC-2, 20 MAR 2025 to 17 APR 2025