

WAAS CH <b>82324</b> <b>W34A</b>	APP CRS <b>346°</b>	Rwy Idg TDZE <b>681</b> Apt Elev <b>723</b>
--	------------------------	---

# RNAV (GPS) RWY 34R

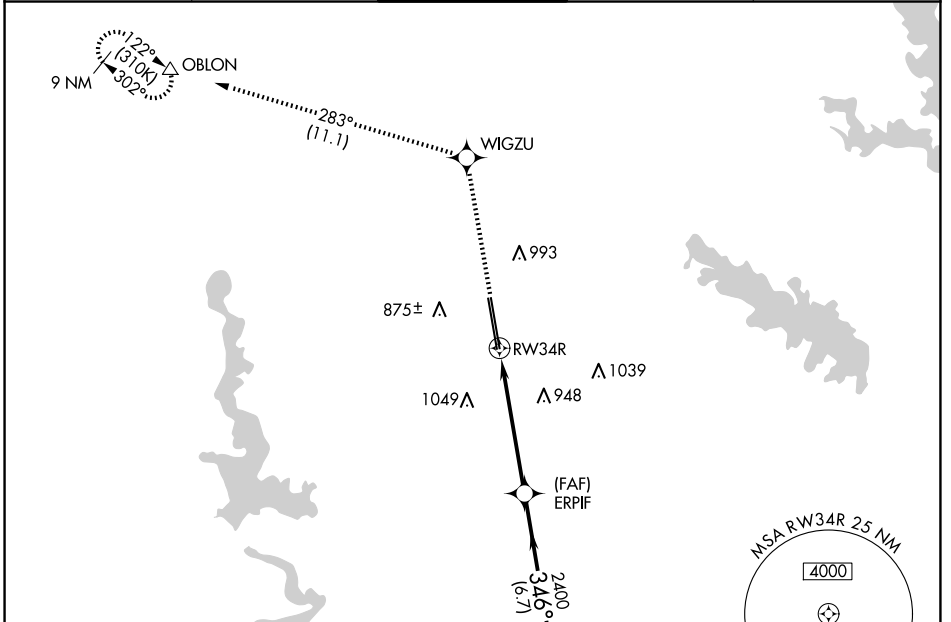
PEROT FLD/FORT WORTH ALLIANCE (AFW)

▼ For uncompensated Baro-VNAV systems, LNAV/VNAV NA below -8°C (18°F) or above 54°C (130°F). Circling NA east of Rwy 16L-34R. DME/DME RNP-0.3 NA.  
 ▲ For inop ALS, increase LPV Cat E visibility to RVR 4000, increase LNAV/VNAV all Cats visibility to 2 SM, increase LNAV Cat E visibility to 1½ SM.

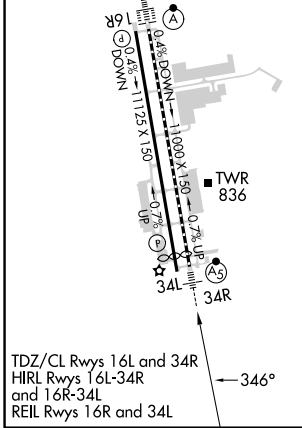


MISSED APPROACH: Climb to 3000 direct WIGZU and on track 283° to OBLON and hold.

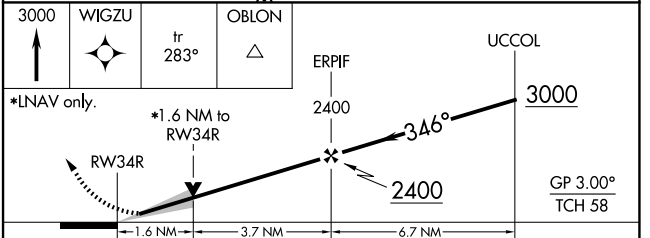
ATIS <b>126.925</b>	LONE STAR APP CON <b>118.1 306.95</b>	ALLIANCE TOWER <b>135.15 257.9</b>	GND CON <b>132.65 306.2</b>	CLNC DEL <b>128.725</b>
------------------------	--	---------------------------------------	--------------------------------	----------------------------



ELEV 723	<b>D</b>	TDZE 681
----------	----------	----------



TDZ/CL Rwy 16L and 34R  
 HIRL Rwy 16L-34R  
 and 16R-34L  
 REIL Rwy 16R and 34L



CATEGORY	A	B	C	D	E
LPV DA	881/18		200 (200-½)		
LNAV/VNAV DA	1437-1¾		756 (800-1¾)		
LNAV MDA	1240/24	559 (600-½)	1240/60	559 (600-1¼)	
<b>C</b> CIRCLING	1240-1 517 (600-1)	1320-1 597 (600-1)	1360-1¾ 637 (700-1¾)	1380-2 657 (700-2)	1380-2½ 657 (700-2½)

SC-2, 20 MAR 2025 to 17 APR 2025

SC-2, 20 MAR 2025 to 17 APR 2025