

TEXOMA FIVE DEPARTURE

LONE STAR DEP CON
118.1 306.95
ATIS
126.925
CLNC DEL
128.725
GND CON
132.65 306.2
ALLIANCE TOWER
135.15 257.9

**TOP ALTITUDE:
ASSIGNED BY ATC**

TULSA
114.4 TUL
Chan 91

RADAR and DME required.

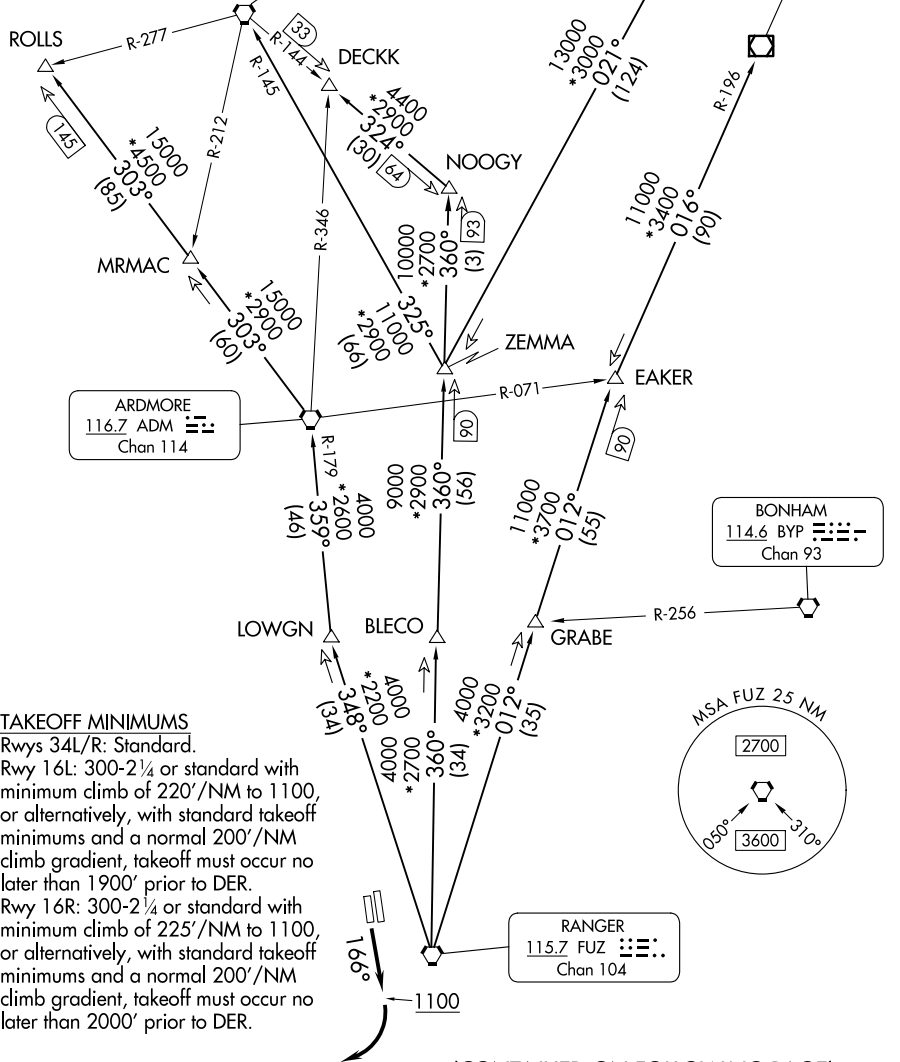
WILL ROGERS
114.1 IRW
Chan 88

OKMULGEE
114.9 OKM
Chan 96

ARDMORE
116.7 ADM
Chan 114

BONHAM
114.6 BYP
Chan 93

RANGER
115.7 FUZ
Chan 104



TAKEOFF MINIMUMS

Rwys 34L/R: Standard.

Rwy 16L: 300-2¼ or standard with minimum climb of 220'/NM to 1100, or alternatively, with standard takeoff minimums and a normal 200'/NM climb gradient, takeoff must occur no later than 1900' prior to DER.

Rwy 16R: 300-2¼ or standard with minimum climb of 225'/NM to 1100, or alternatively, with standard takeoff minimums and a normal 200'/NM climb gradient, takeoff must occur no later than 2000' prior to DER.

NOTE: Chart not to scale.

(CONTINUED ON FOLLOWING PAGE)

SC-2, 20 MAR 2025 to 17 APR 2025

SC-2, 20 MAR 2025 to 17 APR 2025

TEXOMA FIVE DEPARTURE



DEPARTURE ROUTE DESCRIPTION

TAKEOFF RUNWAY 16R: Climb on heading 166° to 1100 before turning right.

When entering controlled airspace, fly assigned heading for RADAR vectors to appropriate route. Maintain ATC assigned altitude.

ARDMORE TRANSITION (TEX5.ADM): From over FUZ VORTAC on FUZ R-348 to LOWGN, then on ADM R-179 to ADM VORTAC.

BLECO TRANSITION (TEX5.BLECO): From over FUZ VORTAC on FUZ R-360 to BLECO.

DECKK TRANSITION (TEX5.DECKK): From over FUZ VORTAC on FUZ R-360 to NOOGY, then on IRW R-144 to DECKK.

EAKER TRANSITION (TEX5.EAKER): From over FUZ VORTAC on FUZ R-012 to EAKER.

GRABE TRANSITION (TEX5.GRABE): From over FUZ VORTAC on FUZ R-012 to GRABE.

OKMULGEE TRANSITION (TEX5.OKM): From over FUZ VORTAC on FUZ R-012 to EAKER, then on OKM R-196 to OKM VOR/DME.

ROLLS TRANSITION (TEX5.ROLLS): From over FUZ VORTAC on FUZ R-348 to LOWGN, then on ADM R-179 to ADM VORTAC, then on ADM R-303 to ROLLS.

TULSA TRANSITION (TEX5.TUL): From over FUZ VORTAC on FUZ R-360 to ZEMMA, then on TUL R-201 to TUL VORTAC.

WILL ROGERS TRANSITION (TEX5.IRW): From over FUZ VORTAC on FUZ R-360 to ZEMMA, then on IRW R-145 to IRW VORTAC.

ZEMMA TRANSITION (TEX5.ZEMMA): From over FUZ VORTAC on FUZ R-360 to ZEMMA.

NOTE: BLECO Transition: ATC assigned.

NOTE: DECKK Transition: For all aircraft inbound to the Oklahoma City area.

NOTE: EAKER Transition: For aircraft inbound to the Tulsa terminal area.

NOTE: GRABE Transition: ATC assigned.

NOTE: OKMULGEE Transition: For all aircraft overflying OKM VOR/DME proceeding on J181 to BDF to destinations in the Chicago terminal area and north.

NOTE: TULSA Transition: For all aircraft overflying TUL VORTAC.

NOTE: WILL ROGERS Transition: For all aircraft overflying IRW VORTAC.

SC-2, 20 MAR 2025 to 17 APR 2025

SC-2, 20 MAR 2025 to 17 APR 2025