

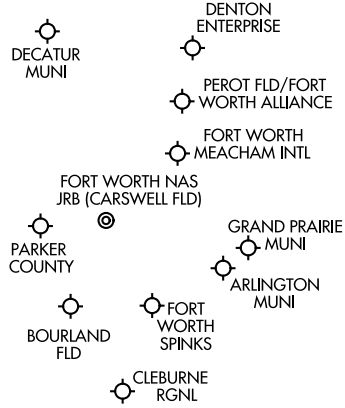
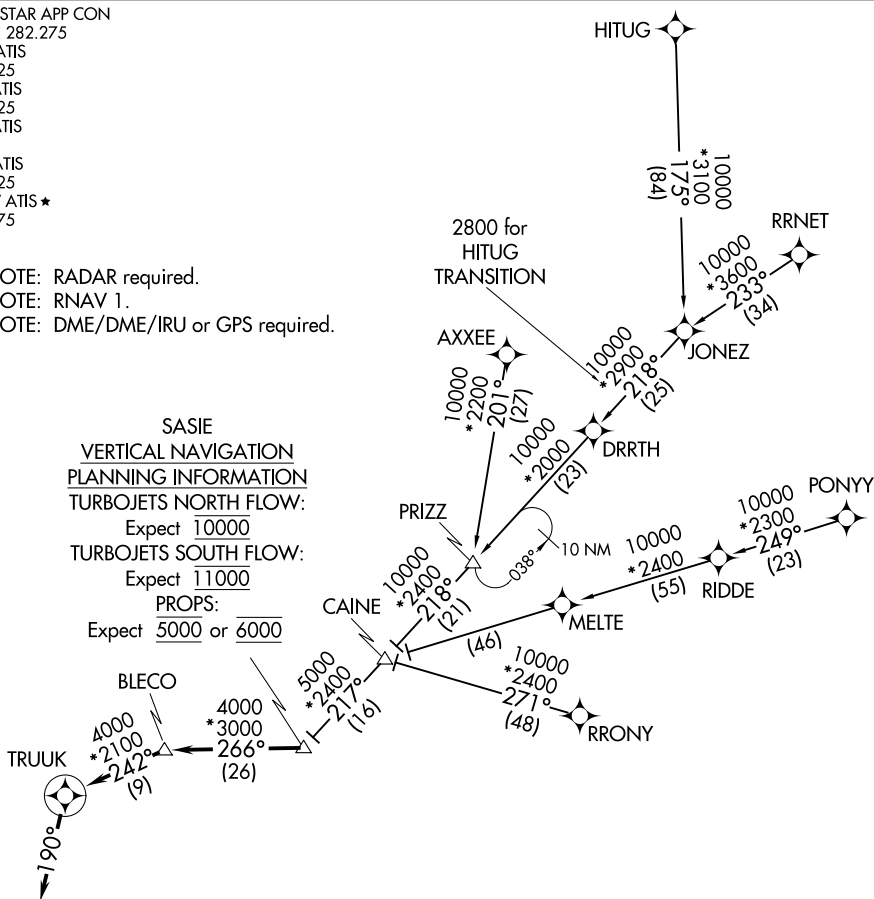
# TRUUK TWO ARRIVAL (RNAV)

DALLAS-FORT WORTH, TEXAS

LONE STAR APP CON  
 124.3 282.275  
 AFW ATIS  
 126.925  
 DTO ATIS  
 119.325  
 FTW ATIS  
 120.7  
 FWS ATIS  
 120.025  
 KNFW ATIS ★  
 351.675

NOTE: RADAR required.  
 NOTE: RNAV 1.  
 NOTE: DME/DME/IRU or GPS required.

SASIE  
 VERTICAL NAVIGATION  
 PLANNING INFORMATION  
 TURBOJETS NORTH FLOW:  
 Expect 10000  
 TURBOJETS SOUTH FLOW:  
 Expect 11000  
 PROPS:  
 Expect 5000 or 6000



NOTE: Chart not to scale.

### ARRIVAL ROUTE DESCRIPTION

AXxee TRANSITION (AXxee.TRUUK2): (For aircraft filing FL230 and below).  
HITUG TRANSITION (HITUG.TRUUK2)  
PONY TRANSITION (PONY.TRUUK2)  
RRNET TRANSITION (RRNET.TRUUK2)  
RRONY TRANSITION (RRONY.TRUUK2): (For aircraft filing FL230 and below).

From SASIE on track 266° to BLECO, then on track 242° to TRUUK, then on track 190°. Expect RADAR vectors to final approach course.

SC-2, 20 MAR 2025 to 17 APR 2025

SC-2, 20 MAR 2025 to 17 APR 2025