

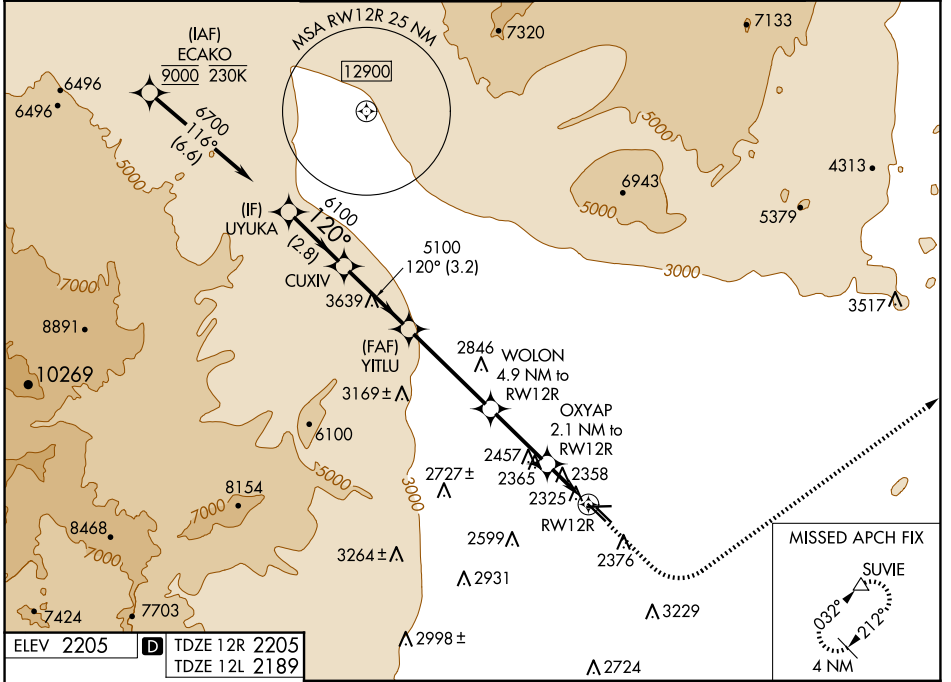
WAAS CH 69443 W12A	APP CRS 120°	Rwy Idg TDZE Apt Elev	12R 5000 2205 2205	12L 4199 2189 2205
--	------------------------	-----------------------------	--	--

RNAV (GPS) RWY 12R

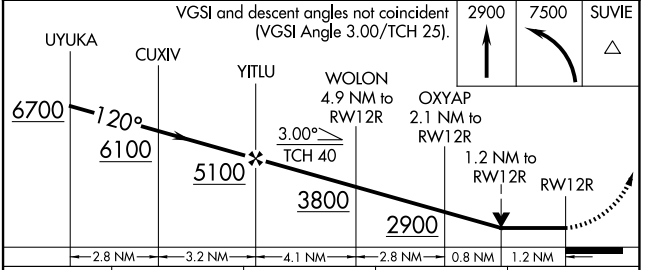
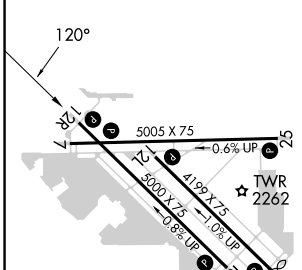
NORTH LAS VEGAS (VGT)

RNP APCH - GPS.		MISSED APPROACH: Climb to 2900 then climbing left turn to 7500 direct SUVIE and hold, continue climb-in-hold to 7500.			
▼ ▲ Rwy 12R helicopter visibility reduction below 3/4 SM NA.					

ATIS 118.05	LAS VEGAS APP CON 119.4 360.85	NORTH LAS VEGAS TOWER* 125.7 (CTAF) 360.75	GND CON 121.7	CLNC DEL 124.0	UNICOM 122.95
-----------------------	--	--	-------------------------	--------------------------	-------------------------



ELEV 2205	D TDZE 12R 2205	TDZE 12L 2189
-----------	------------------------	---------------



	CATEGORY	A	B	C	D
LP	MDA	2620-1	415 (500-1)	2620-1 ¹ / ₈	415 (500-1 ¹ / ₈)
LNAV	MDA	2820-1	615 (700-1)	2820-1 ³ / ₄	615 (700-1 ³ / ₄)
SIDESTEP	12L	2820-1	631 (700-1)	2820-1 ³ / ₄	2820-2 631 (700-2)
C	CIRCLING	2820-1	615 (700-1)	2840-1 ³ / ₄	3540-3 635 (700-1 ³ / ₄) 1335 (1400-3)

REIL all Rwys
MIRL all Rwys

SW-4, 20 MAR 2025 to 17 APR 2025

SW-4, 20 MAR 2025 to 17 APR 2025