

|  |                        |   |             |
|--|------------------------|---|-------------|
| WAAS<br>CH <b>72629</b><br><b>W18A</b> | APP CRS<br><b>182°</b> | Rwy Idg<br>TDZE <b>1305</b><br>Apt Elev <b>1305</b> | <b>5012</b> |
|--|------------------------|---|-------------|

# RNAV (GPS) RWY 18

HAMILTON MUNI (MNZ)

RNP APCH-GPS.

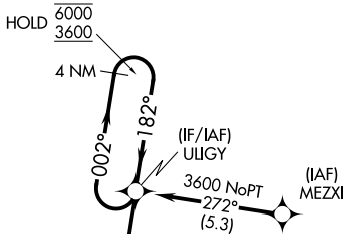
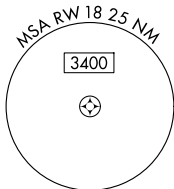
▼ Rwy 18 helicopter visibility reduction below 3/4 SM NA.  
For uncompensated Baro-VNAV systems, LNAV/VNAV NA below -17°C or above 54°C.

MISSED APPROACH: Climb to 3100 direct USXEL and hold.

AWOS-3PT  
**118.525**

GRAY APP CON  
**120.075 323.15**

UNICOM  
**122.7 (CTAF) 0**



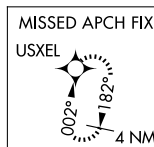
Procedure NA for arrivals at BUILT on V161 southbound.

Procedure NA for arrivals at SONET on V358 northeast bound.

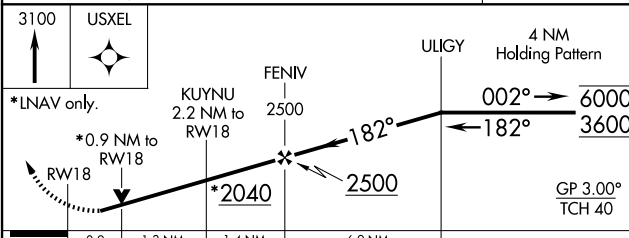
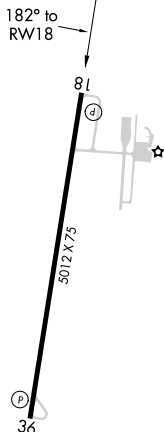
1760

BUILT

1386   
RWY18   
1656   
KUYNU 2.2 NM to RWY18   
1528



ELEV 1305 TDZE 1305



| CATEGORY     | A                     | B                     | C                             | D  |
|--------------|-----------------------|-----------------------|-------------------------------|----|
| LPV DA       |                       | 1555-1                | 250 (300-1)                   | NA |
| LNAV/VNAV DA |                       | 1555-1                | 250 (300-1)                   | NA |
| LNAV MDA     |                       | 1640-1                | 335 (400-1)                   | NA |
| CIRCLING     | 1680-1<br>375 (400-1) | 1840-1<br>535 (600-1) | 1960-1 3/4<br>655 (700-1 3/4) | NA |

MIRL Rwy 18-36