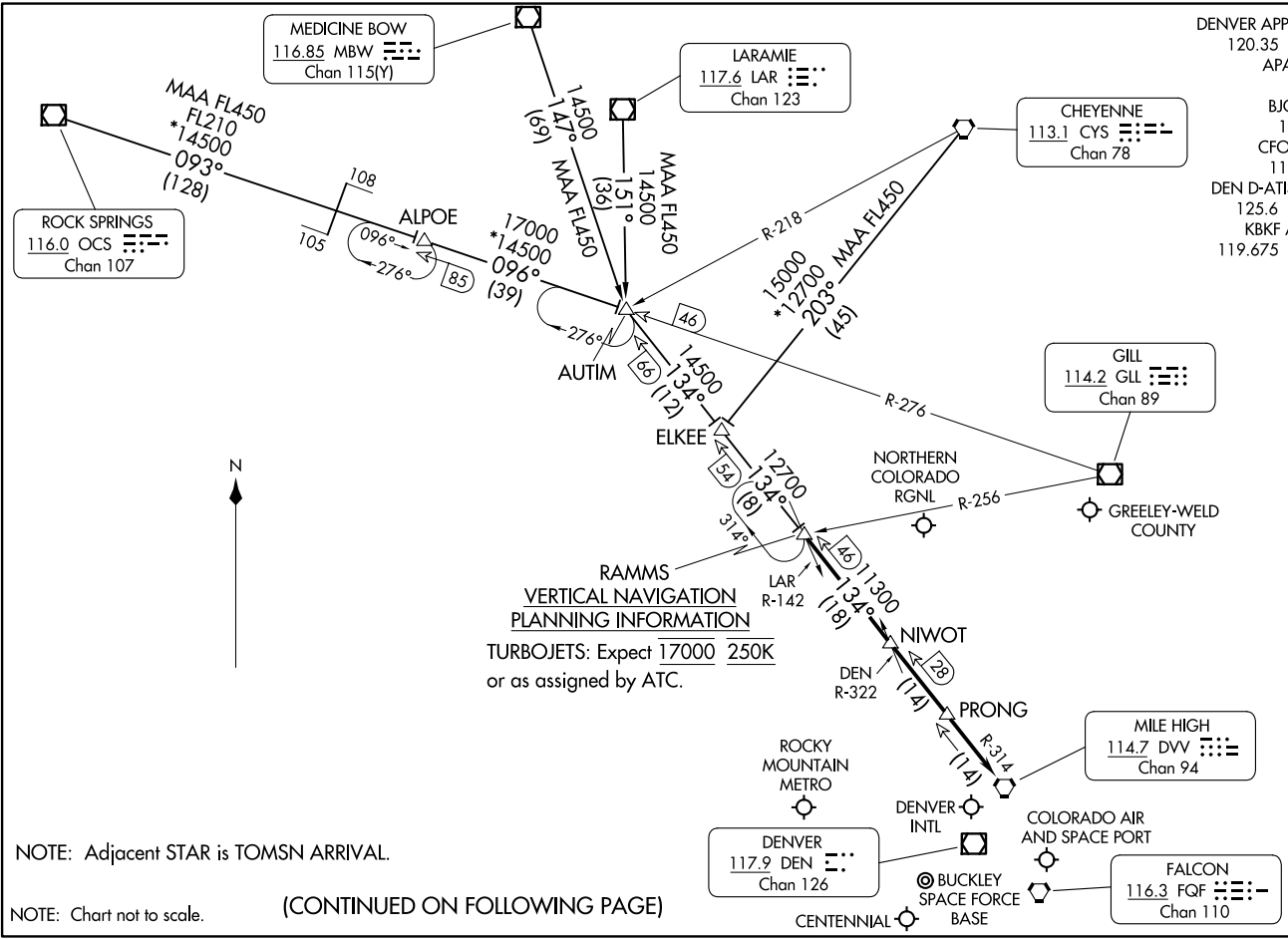


DENVER APP CON
 120.35 379.3
 APA ATIS
 120.3
 BJC ATIS
 126.25
 CFO ATIS
 119.025
 DEN D-ATIS ARR
 125.6 379.9
 KBKF ATIS*
 119.675 259.3

SW-1, 20 MAR 2025 to 17 APR 2025



RAMMS
VERTICAL NAVIGATION
PLANNING INFORMATION
 TURBOJETS: Expect 17000 250K
 or as assigned by ATC.

NOTE: Adjacent STAR is TOMSN ARRIVAL.

NOTE: Chart not to scale.

(CONTINUED ON FOLLOWING PAGE)

SW-1, 20 MAR 2025 to 17 APR 2025

ARRIVAL ROUTE DESCRIPTION

CHEYENNE TRANSITION (CYS.RAMMS8): From over CYS VORTAC on CYS R-203 and DVV R-314 to RAMMS. Thence. . . .

LARAMIE TRANSITION (LAR.RAMMS8): From over LAR VOR/DME on LAR R-151 and DVV R-314 to RAMMS. Thence. . . .

MEDICINE BOW TRANSITION (MBW.RAMMS8): From over MBW VOR/DME on MBW R-147 and DVV R-314 to RAMMS. Thence. . . .

ROCK SPRINGS TRANSITION (OCS.RAMMS8): From over OCS VOR/DME on OCS R-093 and GLL R-276 to ALPOE then on GLL R-276 and DVV R-314 to RAMMS. Thence. . . .

. . . .from over RAMMS on DVV R-314 to DVV VORTAC. Expect RADAR vectors to the final approach course at or before DVV VORTAC.

SW-1, 20 MAR 2025 to 17 APR 2025

SW-1, 20 MAR 2025 to 17 APR 2025