

TOMSN NINE ARRIVAL  
(TOMSN, TOMSN9) 16MAY24

(TOMSN, TOMSN9) 24137  
TOMSN NINE ARRIVAL

AL-9077 (FAA)

DENVER, COLORADO

DENVER APP CON  
119.3 307.3  
APA ATIS  
120.3  
BJC ATIS  
126.25  
CFO ATIS  
119.025  
DEN D-ATIS ARR  
125.6 379.9  
KBKF ATIS  
119.675 259.3  
FNL ATIS  
135.075

HAYDEN  
115.6 CHE  
Chan 103

LARAMIE  
117.6 LAR  
Chan 123

CHEYENNE  
113.1 CYS  
Chan 78

GILL  
114.2 GL  
Chan 89

MILE HIGH  
114.7 DVW  
Chan 94

DENVER  
117.9 DEN  
Chan 126

FALCON  
116.3 FQF  
Chan 110

MEEKER  
115.2 EKR  
Chan 99

KREMMLING  
113.8 RLG  
Chan 85

JEFFCO  
115.4 BJC  
Chan 101

GOULL  
DME required for GOULL  
holding pattern.

### TOMSN VERTICAL NAVIGATION PLANNING INFORMATION

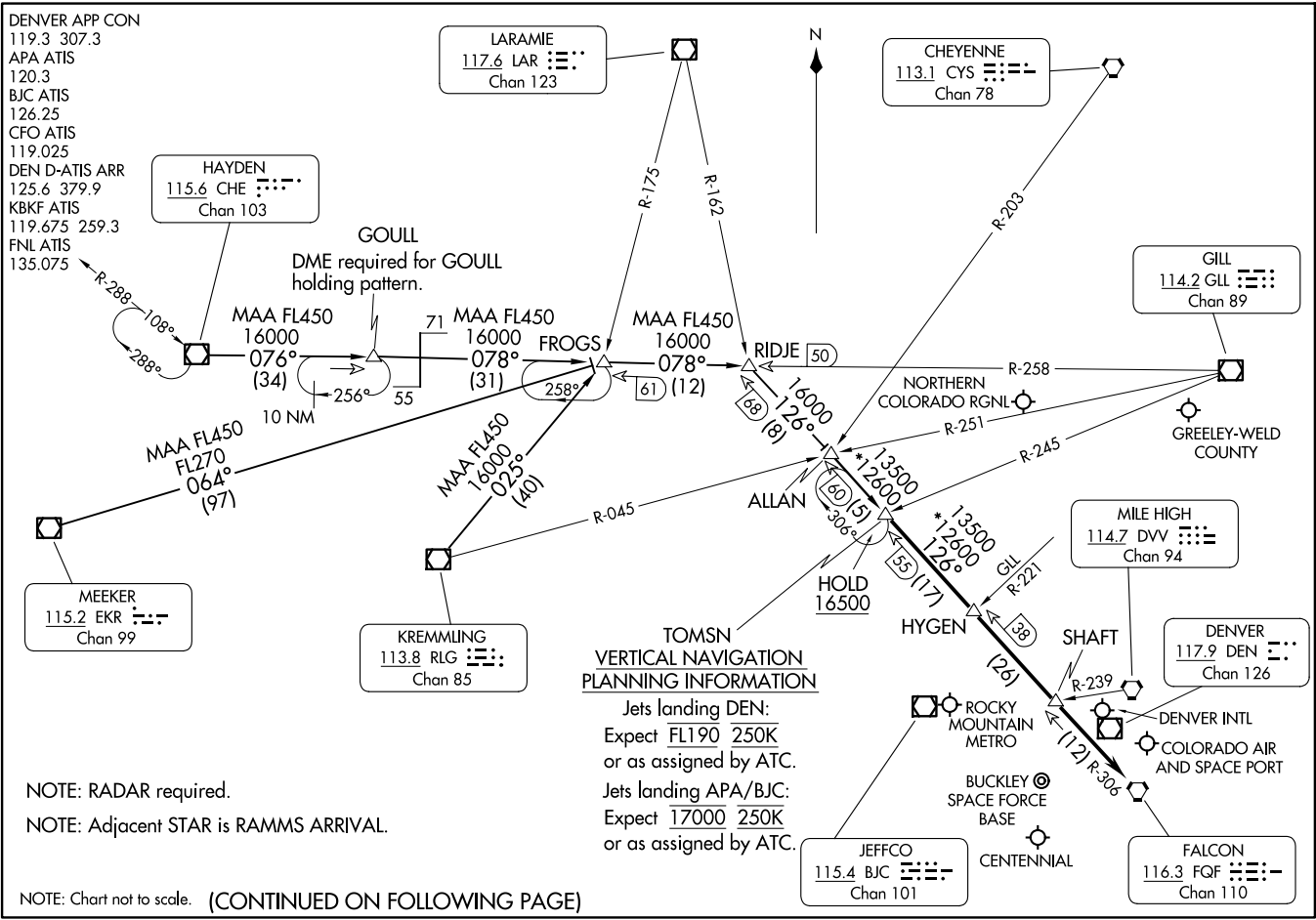
Jets landing DEN:  
Expect FL190 250K  
or as assigned by ATC.  
Jets landing APA/BJC:  
Expect 17000 250K  
or as assigned by ATC.

NOTE: RADAR required.

NOTE: Adjacent STAR is RAMMS ARRIVAL.

NOTE: Chart not to scale. (CONTINUED ON FOLLOWING PAGE)

DENVER, COLORADO



ARRIVAL ROUTE DESCRIPTION

HAYDEN TRANSITION (CHE.TOMSN9): From over CHE VOR/DME on CHE R-076 and GLL R-258 to RIDJE, then on FQF R-306 to TOMSN. Thence. . . .

KREMLING TRANSITION (RLG.TOMSN9): From over RLG VOR/DME on RLG R-025 and GLL R-258 to RIDJE, then on FQF R-306 to TOMSN. Thence. . . .

MEEKER TRANSITION (EKR.TOMSN9): From over EKR VOR/DME on EKR R-064 and GLL R-258 to RIDJE, then on FQF R-306 to TOMSN. Thence. . . .

. . . .from over TOMSN on FQF R-306 to FQF VORTAC. Expect RADAR vectors to the final approach course at or before FQF VORTAC.

SW-1, 20 MAR 2025 to 17 APR 2025

SW-1, 20 MAR 2025 to 17 APR 2025