

WAAS CH <b>50308</b> <b>W24A</b>	APP CRS <b>241°</b>	Rwy Idg TDZE Apt Elev	<b>5000</b> <b>666</b> <b>666</b>
----------------------------------------	------------------------	-----------------------------	-----------------------------------------

# RNAV (GPS) RWY 24

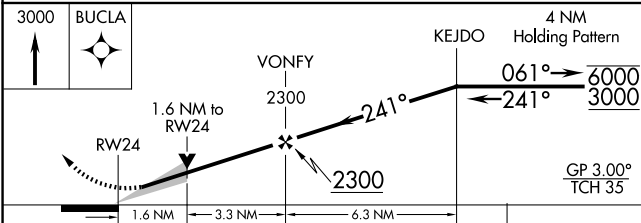
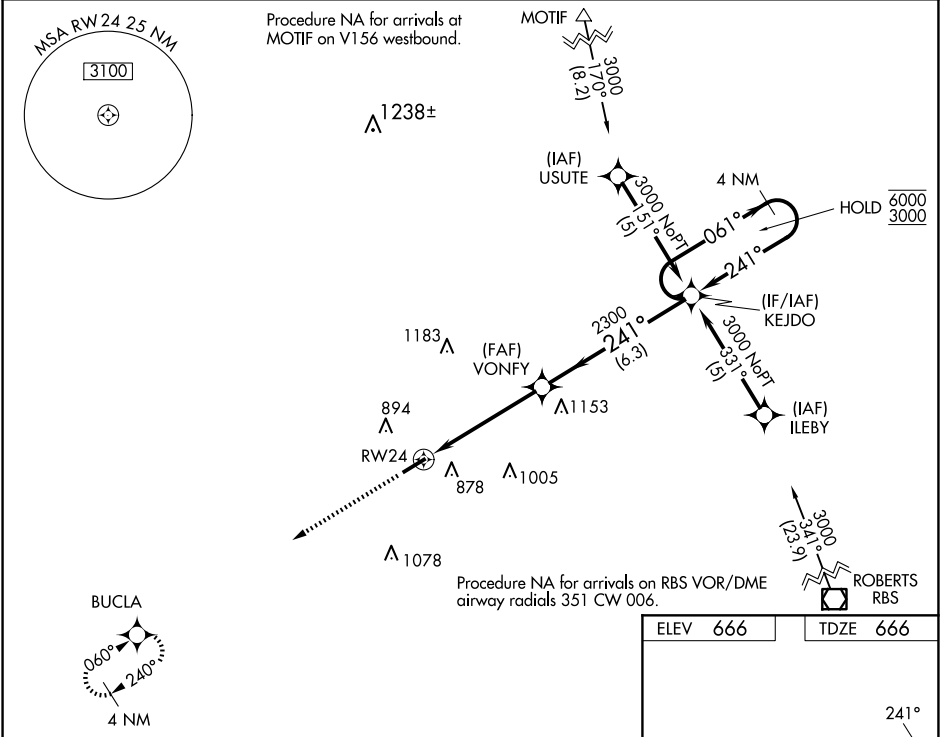
PONTIAC MUNI (PNT)

RNP APCH - GPS.

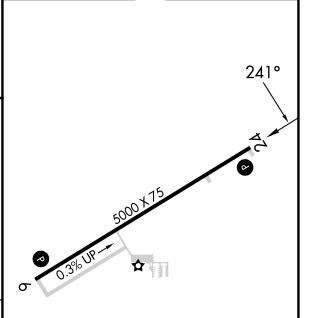
**⚠** For uncompensated Baro-VNAV systems, LNAV/VNAV NA below -16°C or above 54°C. Baro-VNAV and VDP NA when using BMI altimeter setting. When local altimeter setting not received, use BMI altimeter setting: increase LPV DA to 1014 feet; increase LNAV/VNAV DA to 1237 feet and all visibilities ¼ SM; increase all MDAs 100 feet and visibility LNAV Cat C ¼ SM and Circling Cat C ½ SM.

MISSED APPROACH: Climb to 3000 direct BUCLA and hold.

AWOS-3 <b>119.675</b>	CHICAGO CENTER <b>123.75 259.1</b>	UNICOM <b>123.075 (CTAF) 0</b>
--------------------------	---------------------------------------	-----------------------------------



ELEV 666	TDZE 666
----------	----------



CATEGORY	A	B	C	D
LPV DA	916-1		250 (300-1)	NA
LNAV/VNAV DA	1139-1 3/8		473 (500-1 1/8)	NA
LNAV MDA	1220-1	554 (600-1)	1220-1 5/8 554 (600-1 1/8)	NA
CIRCLING	1220-1	554 (600-1)	1320-1 3/4 654 (700-1 1/4)	NA

MIRL Rwy 6-24 0

EC-3, 20 MAR 2025 to 17 APR 2025

EC-3, 20 MAR 2025 to 17 APR 2025