

| | | | |
|--|------------------------|-----------------------------|---|
| WAAS CH 86708 W06A | APP CRS 060° | Rwy Idg TDZE Apt Elev | 5000 657 666 |
|--|------------------------|-----------------------------|---|

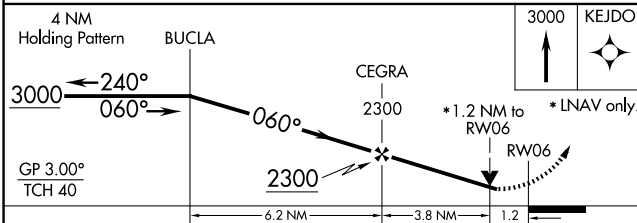
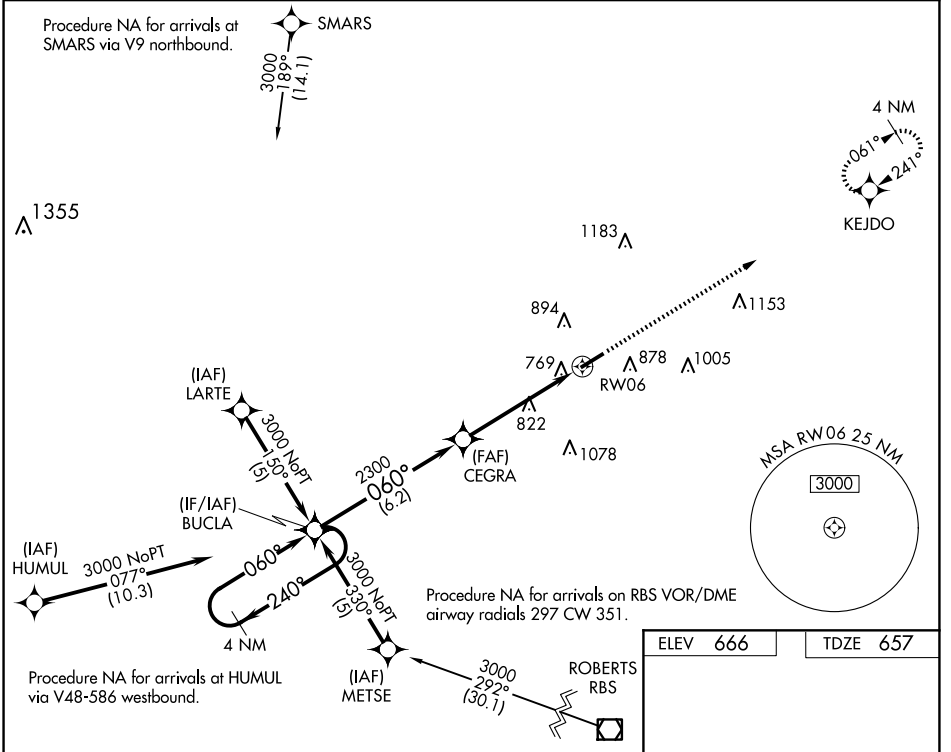
RNAV (GPS) RWY 6

PONTIAC MUNI (PNT)

⚠ DME/DME RNP-0.3 NA. For uncompensated Baro-VNAV systems, LNAV/VNAV NA below -16°C (4°F) or above 54°C (130°F). Baro-VNAV and VDP NA when using Bloomington/Normal altimeter setting. When local altimeter setting not received, use Bloomington/Normal altimeter setting; increase LPV DA to 1138 feet and all visibilities ¼ SM; increase LNAV/VNAV DA to 1339 feet and all visibilities 1 SM; increase all MDAs 100 feet and Circling Cat C visibility ½ SM. Visibility reduction by helicopters NA.

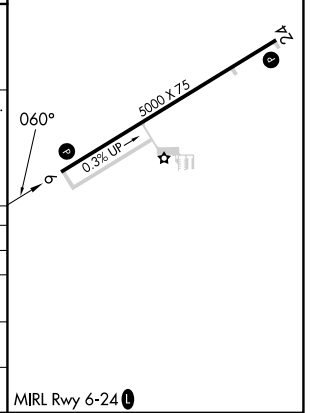
MISSED APPROACH: Climb to 3000 direct KEJDO and hold.

| | | |
|--------------------------|---------------------------------------|-----------------------------------|
| AWOS-3 119.675 | CHICAGO CENTER 123.75 259.1 | UNICOM 123.075 (CTAF) 0 |
|--------------------------|---------------------------------------|-----------------------------------|



| | |
|----------|----------|
| ELEV 666 | TDZE 657 |
|----------|----------|

| CATEGORY | A | B | C | D |
|--------------|-----------------------|-----------------------|-------------------------|----|
| LPV DA | 1040-1½ | 383 (400-1½) | | NA |
| LNAV/VNAV DA | 1071-1½ | 414 (500-1½) | | NA |
| LNAV MDA | 1080-1 | 423 (500-1) | 1080-1¼ 423 (500-1¼) | NA |
| CIRCLING | 1180-1 514 (600-1) | 1200-1 534 (600-1) | 1320-1¾ 654 (700-1¾) | NA |



EC-3, 20 MAR 2025 to 17 APR 2025

EC-3, 20 MAR 2025 to 17 APR 2025