

LOC/DME I-LHZ 109.35 Chan 30 (Y)	APP CRS 046°	Rwy Idg TDZE Apt Elev	5498 368 368
--	------------------------	-----------------------------	---

ILS or LOC RWY 5

TRIANGLE NORTH EXEC (LHZ)

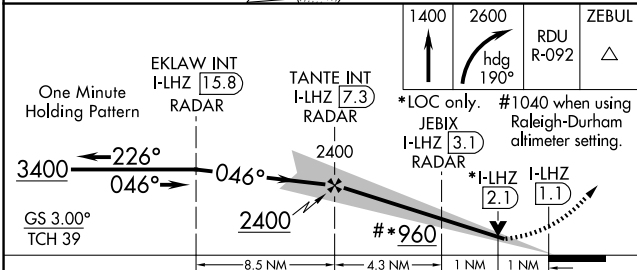
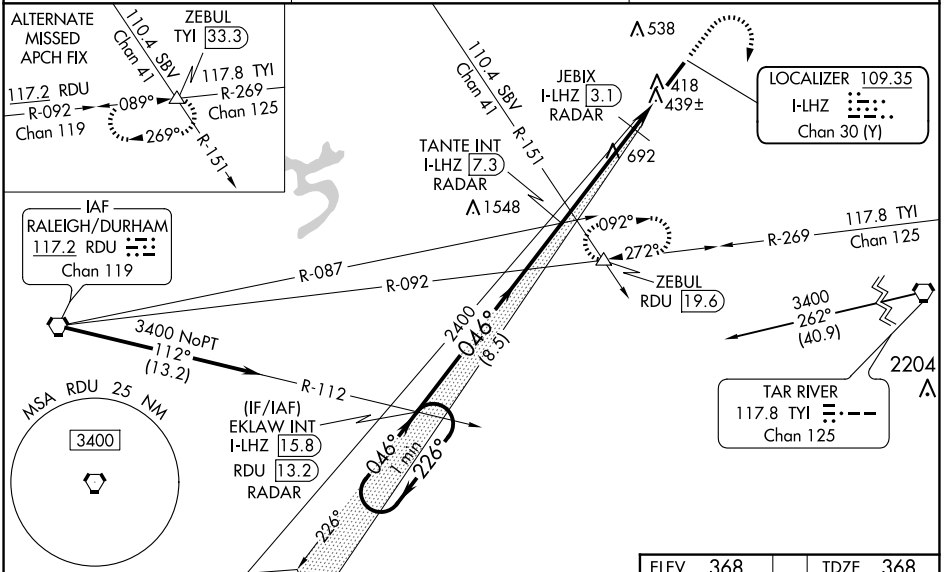
DME or RADAR required.

NA VDP NA when using Raleigh-Durham altimeter setting. When local altimeter setting not received, use Raleigh-Durham altimeter setting and increase ILS DA to 633 feet and all MDAs 80 feet; increase S-LOC and Circling visibility Cats C/D 1/4 SM and JEBIX Fix Minimums: Circling visibility Cat C/D 1/4 SM. For inop ALS when using Raleigh-Durham altimeter setting, increase S-ILS all Cats visibility to 1/2 SM, S-LOC Cats C/D visibility to 1/2 SM and JEBIX Fix Minimums S-LOC Cats C/D visibility to 1/2 SM.

MALSR

MISSED APPROACH: Climb to 1400 then climbing right turn to 2600 on heading 190° and on RDU VORTAC R-092 to ZEBUL INT/RDU 19.6 DME and hold.

AWOS-3 118.325	RALEIGH APP CON 125.3 353.675	UNICOM 123.0 (CTAF) 0
---------------------------------	--	---



ELEV 368	TDZE 368
HIRL Rwy 5-23 0	
REIL Rwy 23 0	
FAF to MAP 6.3 NM	
Knots	60 90 120 150 180
Min:Sec	6:18 4:12 3:09 2:31 2:06

CATEGORY	A	B	C	D
S-ILS 5		568-1/2	200 (200-1/2)	
S-LOC 5	960-1/2	592 (600-1/2)	960-1 1/4	592 (600-1 1/4)
CIRCLING	960-1	592 (600-1)	980-1 3/4 612 (700-1 3/4)	1000-2 632 (700-2)
JEBIX FIX MINIMUMS				
S-LOC 5	700-1/2	332 (400-1/2)	700-3/4	332 (400-3/4)
CIRCLING	800-1 432 (500-1)	840-1 472 (500-1)	980-1 3/4 612 (700-1 3/4)	1000-2 632 (700-2)

SE-2, 20 MAR 2025 to 17 APR 2025

SE-2, 20 MAR 2025 to 17 APR 2025