

VOR/DME VNY 113.1 Chan 78	APP CRS 046°	Rwy Idg TDZE Apt Elev N/A N/A 1003
---	------------------------	--

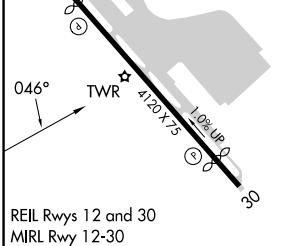
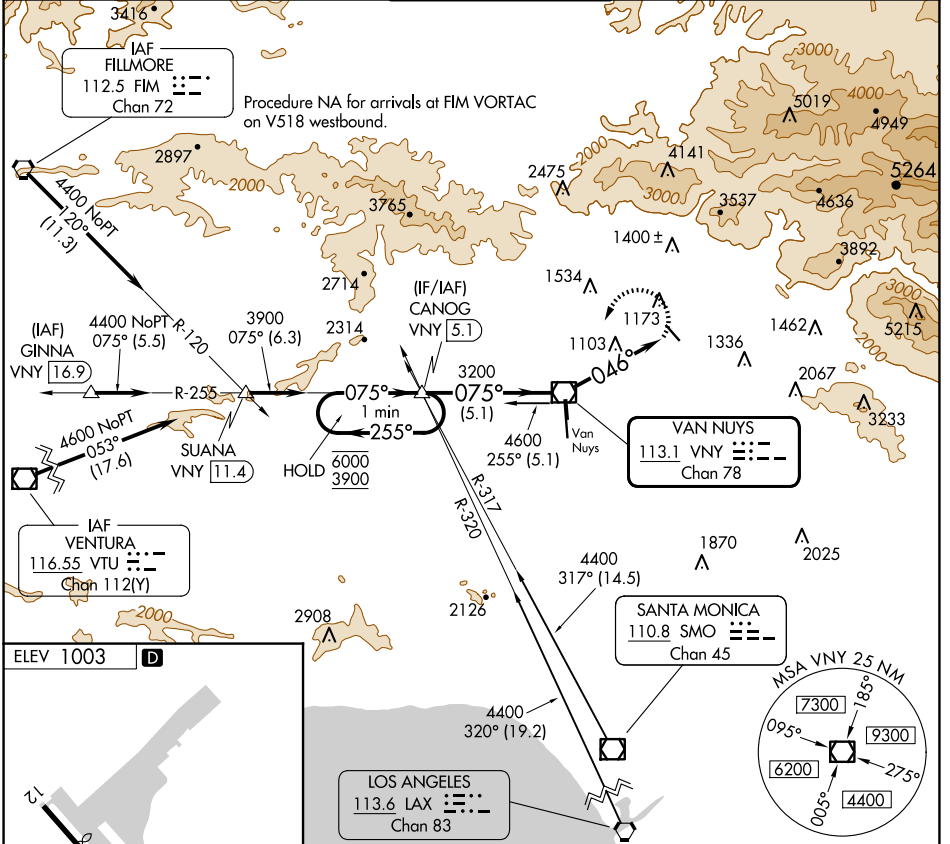
VOR-A

WHITEMAN (WHP)

⚠ When local altimeter setting not received, use Burbank altimeter setting. Procedure NA at night.

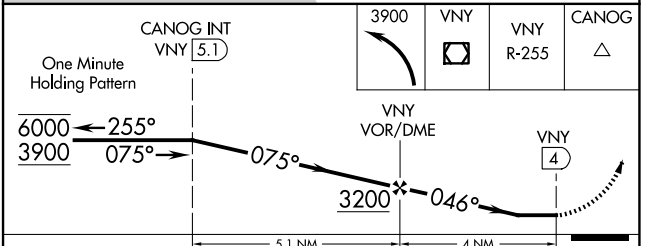
⚠ MISSED APPROACH: Climbing left turn to 3900 direct VNY VOR/DME then on VNY VOR/DME R-255 to CANOG INT/ 5.1 DME and hold.

ATIS 132.1	SOCAL APP CON 120.4 360.6 (NORTH) 134.2 338.2 (WEST)	WHITEMAN TOWER * 135.0 (CTAF)	GND CON 125.0	UNICOM 122.95
----------------------	--	---	-------------------------	-------------------------



REIL Rwys 12 and 30
MIRL Rwy 12-30

FAF to MAP 4 NM					
Knots	60	90	120	150	180
Min:Sec	4:00	2:40	2:00	1:36	1:20



LOS ANGELES, CALIFORNIA Amdt 2C 07SEP23	34°16'N-118°25'W	WHITEMAN (WHP) VOR-A
--	------------------	--------------------------------

SW-3, 20 MAR 2025 to 17 APR 2025

SW-3, 20 MAR 2025 to 17 APR 2025