

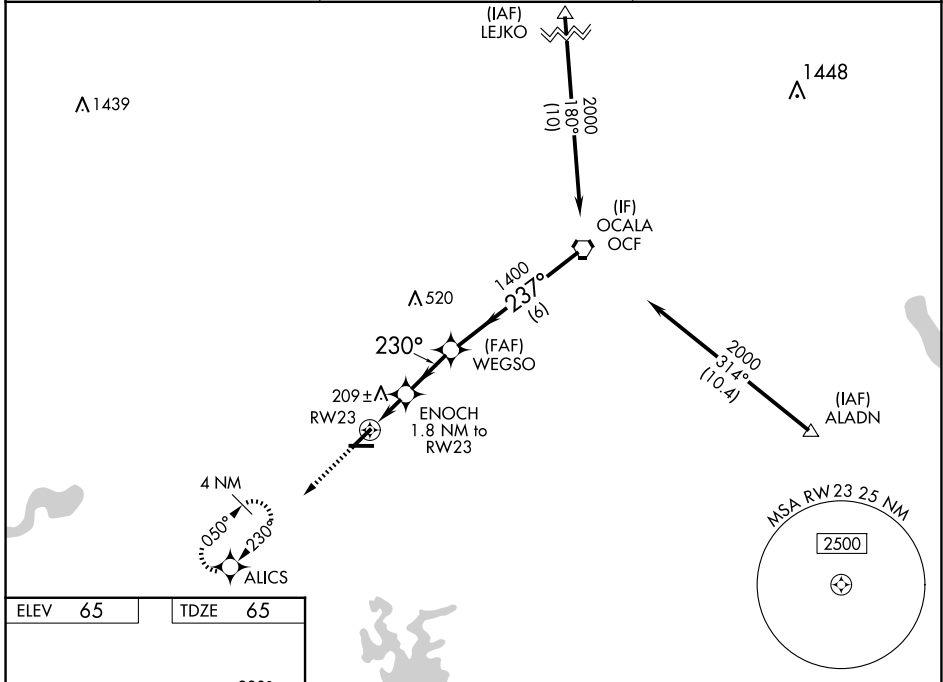
| | | |
|--|------------------------|---|
| WAAS CH 48828 W23A | APP CRS 230° | Rwy Idg 5000 TDZE 65 Apt Elev 65 |
|--|------------------------|---|

RNAV (GPS) RWY 23

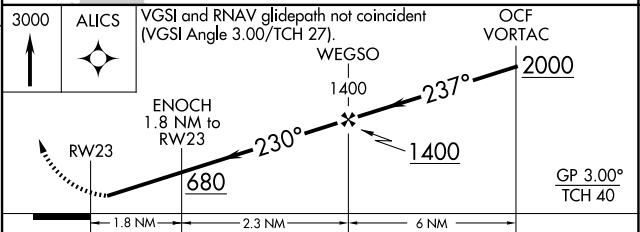
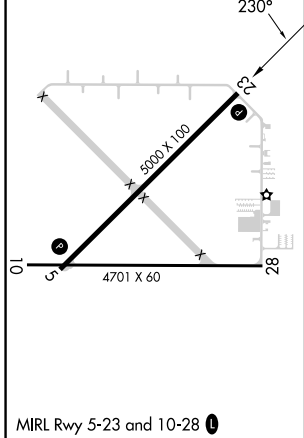
MARION COUNTY (X35)

| | | |
|-----------------|---|---|
| RNP APCH - GPS. | <p>▼ Rwy 23 helicopter visibility reduction below $\frac{3}{4}$ SM NA. Baro-VNAV NA. Use Ocala altimeter setting; when not received, use Leesburg altimeter setting and increase LPV DA to 424 feet; increase LNAV/VNAV DA to 579 feet; increase all MDAs 60 feet and LNAV visibility Cat C/D $\frac{1}{8}$ SM, and Circling visibility Cat D $\frac{1}{4}$ SM. Circling Rwy 5, 10, 28 NA at night.</p> | MISSED APPROACH: Climb to 3000 direct ALICS and hold, continue climb-in-hold to 3000. |
|-----------------|---|---|

| | | |
|--------------------------------|---|-------------------------------|
| OCF AWOS-3PT 128.125 | JACKSONVILLE APP CON 118.6 251.15 | UNICOM 122.8 (CTAF) |
|--------------------------------|---|-------------------------------|



| | |
|---------|---------|
| ELEV 65 | TDZE 65 |
|---------|---------|



| CATEGORY | A | B | C | D |
|--------------|-------|---------------------|---|---|
| LPV DA | | 374-1 | 309 (400-1) | |
| LNAV/VNAV DA | | 529- $1\frac{3}{8}$ | 464 (500- $1\frac{3}{8}$) | |
| LNAV MDA | 540-1 | 475 (500-1) | 540- $1\frac{3}{8}$ | 475 (500- $1\frac{3}{8}$) |
| CIRCLING | 540-1 | 475 (500-1) | 580- $1\frac{1}{2}$ 515 (600- $1\frac{1}{2}$) | 760- $2\frac{1}{4}$ 695 (700- $2\frac{1}{4}$) |

SE-3, 20 MAR 2025 to 17 APR 2025

SE-3, 20 MAR 2025 to 17 APR 2025