

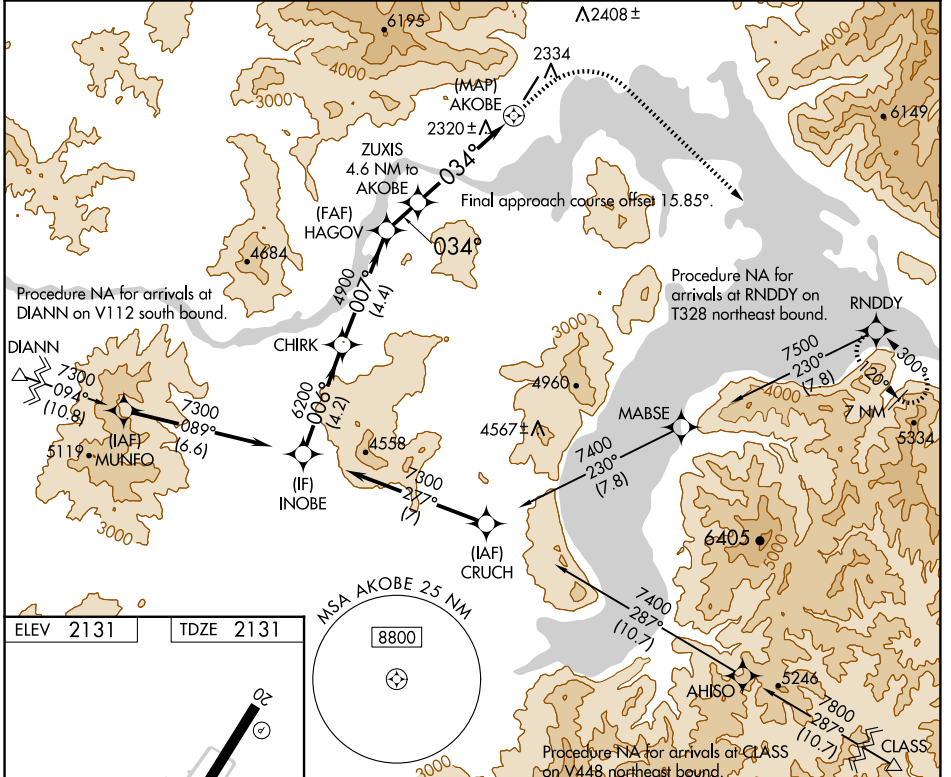
APP CRS	Rwy Idg	<b>5501</b>
<b>034°</b>	TDZE	<b>2131</b>
	Apt Elev	<b>2131</b>

# RNAV (GPS) Y RWY 2

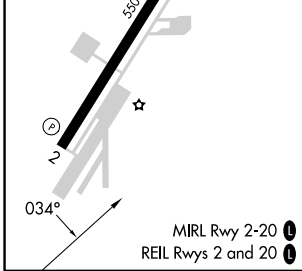
SANDPOINT (SZT)

RNP APCH - GPS.	MISSED APPROACH: Climb to 3900 then climbing right turn to 9000 direct RNDDDY and hold, continue climb-in-hold to 9000. *Missed approach requires minimum climb of 310 feet per NM to 8100; If unable to meet climb gradient, see RNAV (GPS)-B.
<p><b>▼</b> Circling NA west of Rwy 2-20. Straight-in Rwy 2 NA at night, Circling Rwy 2 NA at night. Rwy 2 helicopter visibility reduction below 1 SM NA.</p>	

AWOS-2 <b>135.425</b>	SEATTLE CENTER <b>123.95 290.55</b>	UNICOM <b>122.7 (CTAF) 0</b>
--------------------------	--	---------------------------------



ELEV 2131	TDZE 2131	MSA AKOBE 2.5 NM 8800	
INOBE		CHIRK	HAGOV
7300		6200	4900
006°		007°	034°
4.2 NM		4.4 NM	1.5 NM
ZUXIS 4.6 NM to AKOBE		3.75° TCH 50	
4300		3900 9000 RNDDDY	



CATEGORY	A	B	C	D
LNAV MDA*	3560-1¼ 1429 (1500-1¼)	3560-1½ 1429 (1500-1½)	3560-3 1429 (1500-3)	NA
CIRCLING	3560-1¼ 1429 (1500-1¼)	3560-1½ 1429 (1500-1½)	3560-3 1429 (1500-3)	NA

NW-1, 20 MAR 2025 to 17 APR 2025

NW-1, 20 MAR 2025 to 17 APR 2025