

KUSSO ONE DEPARTURE (RNAV)  
(KUSSO1 .KUSSO) 24MAR22

(KUSSO1 .KUSSO) 24305  
KUSSO ONE DEPARTURE (RNAV)

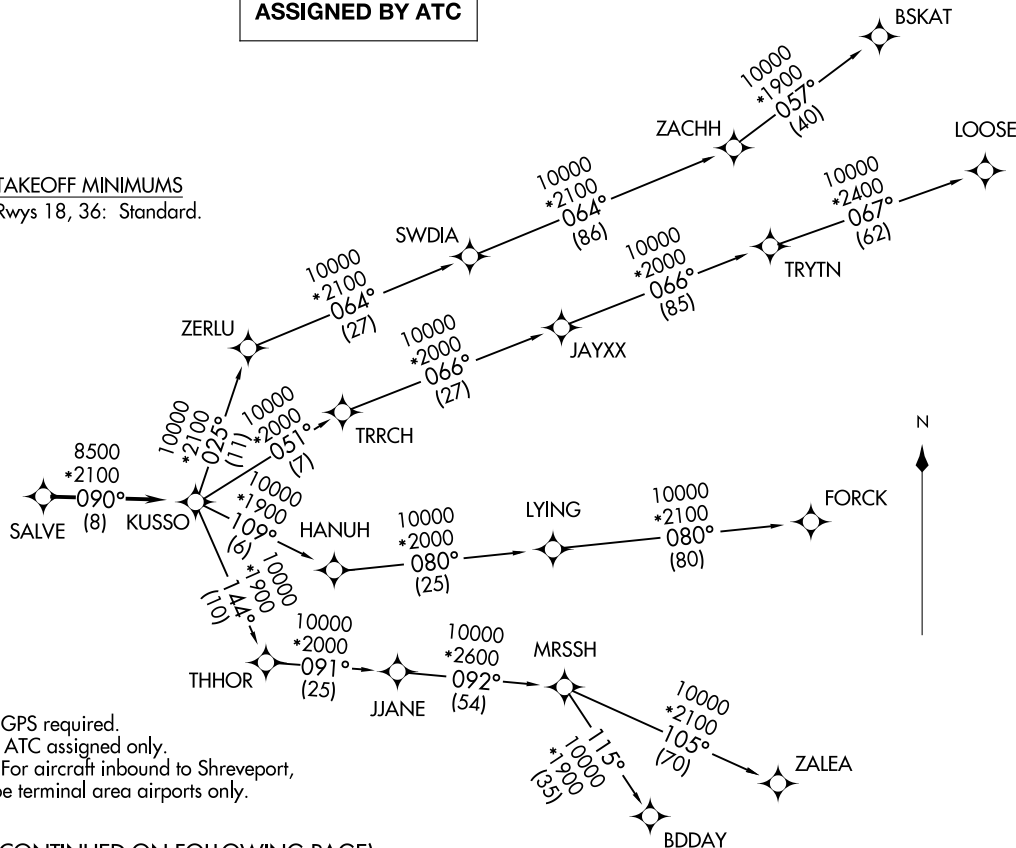
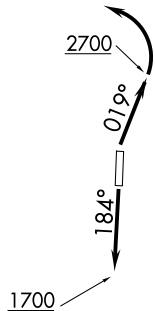
AL9212 (FAA)

MID-WAY RGNL (JWY)  
MIDLOTHIAN/WAXAHACHIE, TEXAS

LONE STAR DEP CON  
125.2 343.65  
CTAF  
122.975

**TOP ALTITUDE:  
ASSIGNED BY ATC**

TAKEOFF MINIMUMS  
Rwys 18, 36: Standard.



- NOTE: RADAR required.
- NOTE: RNAV 1.
- NOTE: DME/DME/IRU or GPS required.
- NOTE: BDDAY Transition: ATC assigned only.
- NOTE: MRSSH Transition: For aircraft inbound to Shreveport, Jackson and Monroe terminal area airports only.

(CONTINUED ON FOLLOWING PAGE)

NOTE: Chart not to scale.

MIDLOTHIAN/WAXAHACHIE, TEXAS  
MID-WAY RGNL (JWY)

# KUSSO ONE DEPARTURE (RNAV)



## DEPARTURE ROUTE DESCRIPTION

TAKEOFF RUNWAY 18: Climb on heading 184° to 1700 before proceeding northbound.

TAKEOFF RUNWAY 36: Climb on heading 019° to 2700 before turning left.

When entering controlled airspace, fly heading assigned by ATC, expect vector to SALVE, then on track 090° to KUSSO, then on assigned transition. Maintain ATC assigned altitude, expect filed altitude 10 minutes after departure.

BDDAY TRANSITION (KUSSO1.BDDAY)

BSKAT TRANSITION (KUSSO1.BSKAT)

FORCK TRANSITION (KUSSO1.FORCK)

LOOSE TRANSITION (KUSSO1.LOOSE)

MRSSH TRANSITION (KUSSO1.MRSSH)

ZALEA TRANSITION (KUSSO1.ZALEA)

SC-2, 20 MAR 2025 to 17 APR 2025

SC-2, 20 MAR 2025 to 17 APR 2025