

WAAS CH 62814 W36A	APP CRS 358°	Rwy ldg 6500 TDZE 703 Apt Elev 727
--	------------------------	---

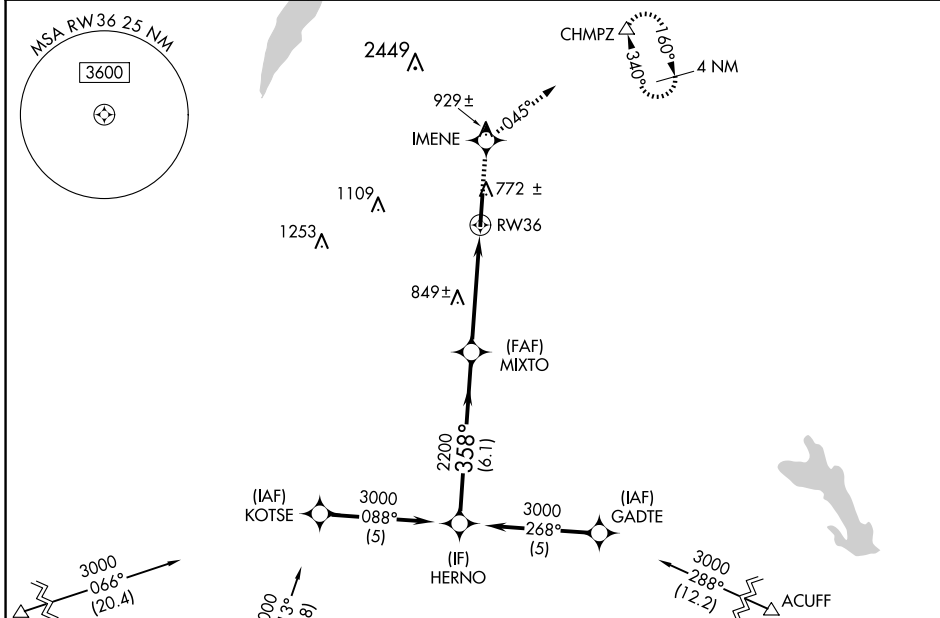
RNAV (GPS) RWY 36

MID-WAY RGNL (JWY)

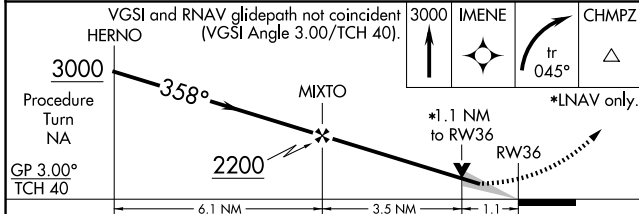
⚠ For uncompensated Baro-VNAV systems, LNAV/VNAV NA below -16°C (4°F) or above 47°C (117°F). DME/DME RNP-0.3 NA. When local altimeter setting not received, use Dallas Love Fld altimeter setting and increase all DA 88 feet and all MDA 100 feet, increase LPV all Cats visibility ¼ mile, LNAV/VNAV all Cats visibility ½ mile, LNAV Cats C and D visibility ¼ mile, Circling Cat D visibility ¼ mile. Baro-VNAV and VDP NA when using Dallas Love Fld altimeter setting.

MISSED APPROACH: Climb to 3000 direct IMENE and right turn via track 045° to CHMPZ and hold, continue climb-in-hold to 3000.

AWOS-3P 119.575	LONE STAR APP CON 125.2 343.65	UNICOM 122.975 (CTAF)
---------------------------	--	---------------------------------



ELEV 727	TDZE 703
----------	----------



CATEGORY	A	B	C	D
LPV DA		953-1	250 (300-1)	
LNAV/ VNAV DA		992-1	289 (300-1)	
LNAV MDA	1100-1	397 (400-1)		1100-1¼ 397 (400-1¼)
CIRCLING	1160-1 433 (500-1)	1180-1 453 (500-1)	1300-1½ 573 (600-1½)	1420-2¼ 693 (700-2¼)



SC-2, 20 MAR 2025 to 17 APR 2025

SC-2, 20 MAR 2025 to 17 APR 2025