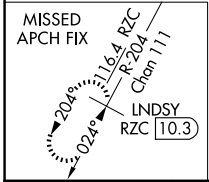
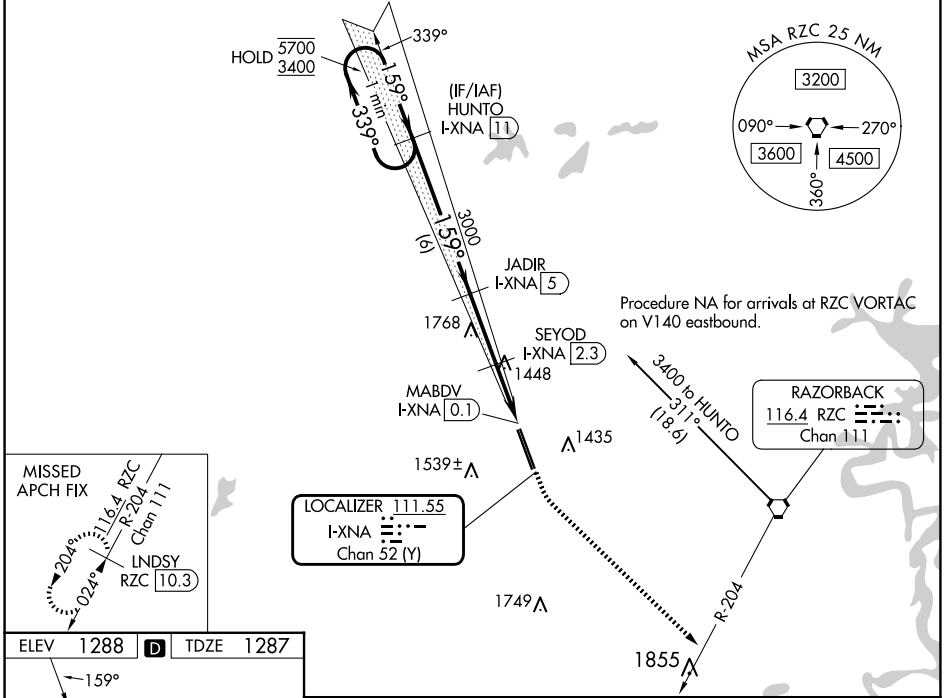


LOC/DME I-XNA <b>111.55</b> Chan 52 (Y)	APP CRS <b>159°</b>	Rwy ldg TDZE <b>8800</b> <b>1287</b>	Apt Elev <b>1288</b>
---	------------------------	--	-------------------------

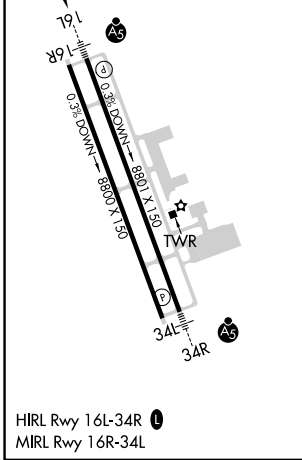
# ILS or LOC RWY 16L

NORTHWEST ARKANSAS NTL (XNA)

DME required.		MALSR	MISSED APPROACH: Climb to 1800 then climbing left turn to 3400 on heading 133° and RZC VORTAC R-204 to LNSDY/RZC 10.3 DME and hold.
ATIS <b>119.425</b>	RAZORBACK APP CON * <b>121.0 244.575</b>	NORTHWEST ARKANSAS NTL TOWER * <b>127.1 (CTAF) 0</b>	GND CON <b>121.9</b>



ELEV 1288	D	TDZE 1287
-----------	---	-----------



VGSi and ILS glidepath not coincident (VGSi Angle 3.00/TCH 52).		1800	3400	RZC R-204	LNSDY RZC 10.3
One Minute Holding Pattern		hdg 133°			
HUNTO I-XNA (11)		JADIR I-XNA (5)	SEYOD I-XNA (2.3)	I-XNA (1)	I-XNA DME ANTENNA
5700	← 339°	3000	159° →	2140	MABDV I-XNA (0.1)
3400					
GS 3.00° TCH 57		6 NM	2.7 NM	1.4 NM	0.9
CATEGORY	A	B	C	D	E
S-ILS 16L*	1487/24 200 (200-½)				
S-LOC 16L	1700/24 413 (500-½)	1700/40 413 (500-¾)			
CIRCLING	1740-1 452 (500-1)	1760-1 472 (500-1)	2040-2¼ 752 (800-2¼)	2080-2½ 792 (800-2½)	2080-2¾ 792 (800-2¾)

SC-1, 20 MAR 2025 to 17 APR 2025

SC-1, 20 MAR 2025 to 17 APR 2025