

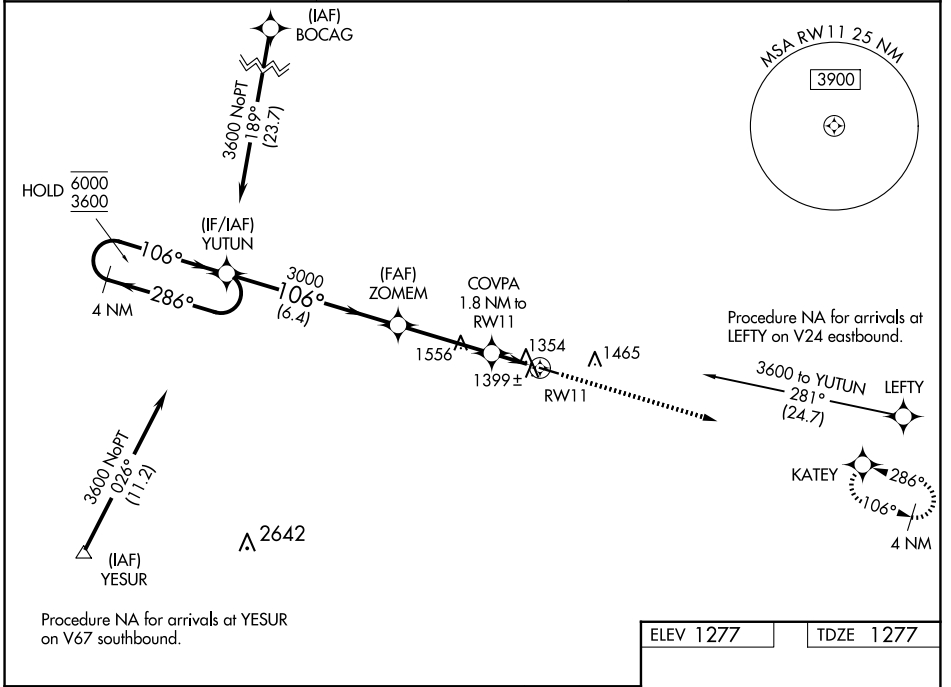
WAAS CH 65829 W11A	APP CRS 106°	Rwy Idg TDZE Apt Elev	4001 1277 1277
----------------------------------------	------------------------	-----------------------------	-------------------------------------------

RNAV (GPS) RWY 11

FILLMORE COUNTY (FKA)

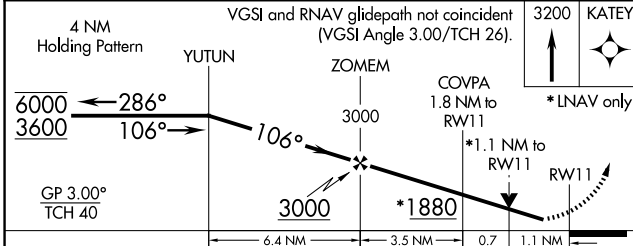
RNP APCH.	MISSED APPROACH: Climb to 3200 direct KATEY and hold.
<p>▼ Rwy 11 helicopter visibility reduction below 3/4 SM NA.</p> <p>▲ For uncompensated Baro-VNAV systems, LNAV/VNAV NA below -17°C or above 54°C.</p>	

AWOS-3PT 118.55	ROCHESTER APP CON * 119.8 251.125	CTAF 122.9 0
---------------------------	---------------------------------------------	------------------------



NC-1, 20 MAR 2025 to 17 APR 2025

NC-1, 20 MAR 2025 to 17 APR 2025



ELEV 1277	TDZE 1277
-----------	-----------

3200 KATEY

*LNAV only

REIL Rwy 11 and 29 0

MIRL Rwy 11-29 0

CATEGORY	A	B	C	D
LPV DA	1527-1	250 (300-1)		NA
LNAV/VNAV DA	1573-1	296 (300-1)		NA
LNAV MDA	1660-1	383 (400-1)	1660-1 1/8 383 (400-1 1/8)	NA
C CIRCLING	1700-1 423 (500-1)	1900-1 623 (700-1)	1900-1 3/4 623 (700-1 3/4)	NA