

APP CRS	Rwy Idg	N/A
<b>282°</b>	TDZE	N/A
	Apt Elev	<b>2032</b>

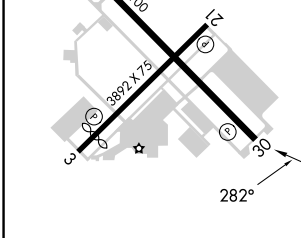
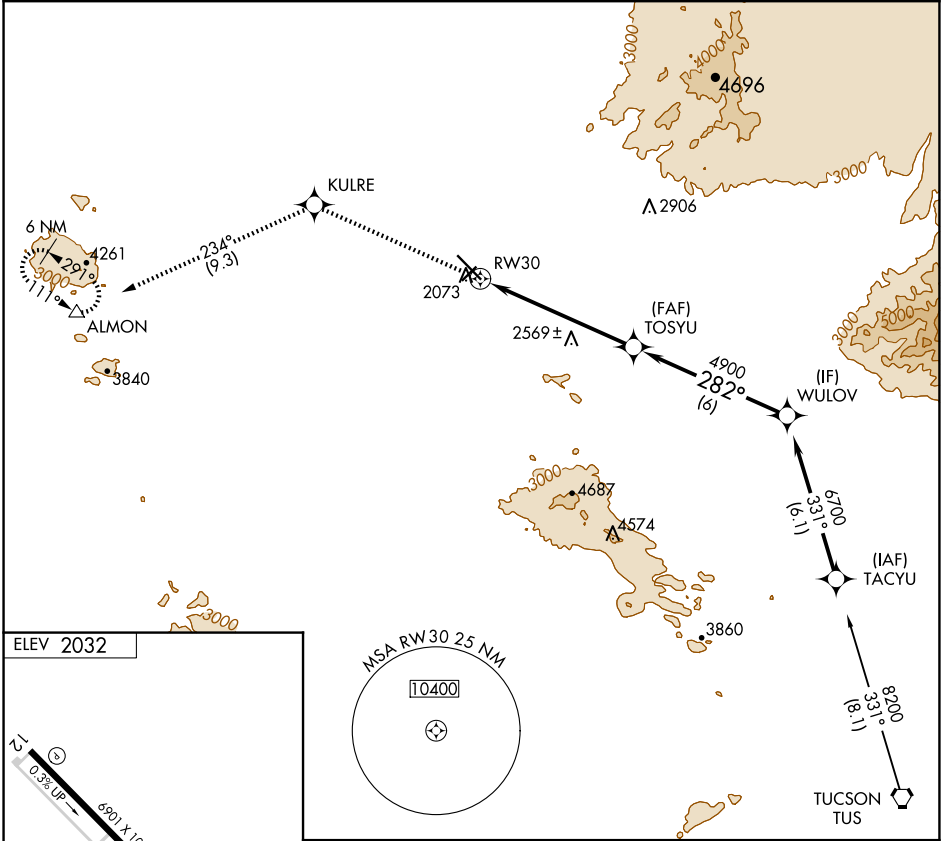
# RNAV (GPS)-E

MARANA RGNL (AVQ)

**⚠** When local altimeter setting not received, use Ryan Fld altimeter setting and increase all MDAs 100 feet and increase Circling Cat A visibility ¼ SM and Cat C ½ SM. DME/DME RNP-0.3 NA.

**⚠** MISSED APPROACH: Climb to 6000 direct KULRE and 234° track to ALMON and hold, continue climb-in-hold to 6000.

AWOS-3 <b>118.375</b>	TUCSON APP CON <b>119.4 318.1</b>	UNICOM <b>123.0 (CTAF) 0</b>
--------------------------	--------------------------------------	---------------------------------



REIL Rwy 3 and 21  
 REIL Rwy 12 and 30  
 MIRL Rwy 3-21 and 12-30

6000	KULRE	234° tr	ALMON	TOSYU	WULOV
				4900	6700
				6 NM	6 NM
					Procedure Turn NA

CATEGORY	A	B	C	D
<b>C</b> CIRCLING	2820-1 788 (800-1)	2820-1¼ 788 (800-1¼)	2820-2¼ 788 (800-2¼)	NA

SW-4, 20 MAR 2025 to 17 APR 2025

SW-4, 20 MAR 2025 to 17 APR 2025