

WAAS CH <b>69415</b> <b>W01A</b>	APP CRS <b>013°</b>	Rwy Idg TDZE Apt Elev	<b>8000</b> <b>63</b> <b>75</b>
--	------------------------	-----------------------------	---------------------------------------

# RNAV (GPS) RWY 1R

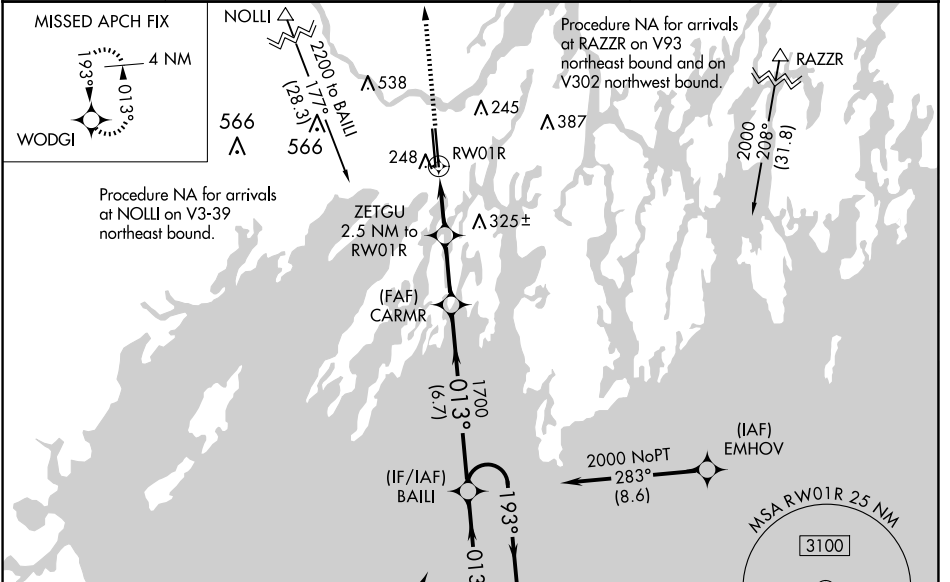
BRUNSWICK EXEC (BXM)

**⚠** Baro-VNAV NA when using Portland altimeter setting. For uncompensated Baro-VNAV systems, LNAV/VNAV NA below -15°C (5°F) or above 54°C (130°F). DME/DME RNP-0.3 NA. VDP NA when using Portland altimeter setting. When local altimeter setting not received, use Portland altimeter setting and increase LPV DA to 314, LNAV/VNAV DA to 461 and all LNAV/VNAV visibilities ¼ SM; increase all MDA 60 feet and LNAV Cat C/D visibilities ¼ SM and Circling Cat C/D visibilities ¼ SM. For Inop ALS when using Portland altimeter setting, increase LNAV Cat C/D visibility to 1 ½ SM.

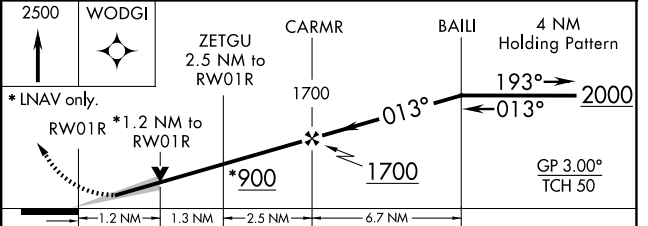
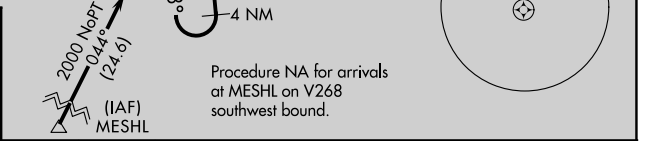
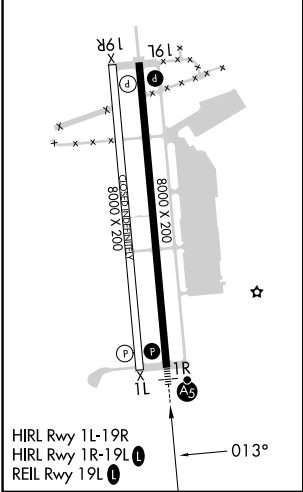


**MISSED APPROACH:**  
Climb to 2500 direct WODGI and hold.

AWOS-3PT <b>134.875</b>	PORTLAND APP CON ★ (112°-292°) <b>119.75 269.35</b> (293°-111°) <b>120.4 299.2</b>	CLNC DEL <b>123.65</b>	UNICOM <b>122.725 (CTAF)</b> <b>📶</b>
----------------------------	---	---------------------------	--



ELEV 75	TDZE 63
---------	---------



CATEGORY	A	B	C	D
LPV DA		263-½	200 (200-½)	
LNAV/VNAV DA		410-⅝	347 (400-⅝)	
LNAV MDA	500-½	437 (500-½)	500-¾	437 (500-¾)
<b>C</b> CIRCLING	560-1	485 (500-1)	840-2¼ 765 (800-2¼)	840-2½ 765 (800-2½)

NE-1, 20 MAR 2025 to 17 APR 2025

NE-1, 20 MAR 2025 to 17 APR 2025