

WAAS CH 65842 W05A	APP CRS 047°	Rwy Idg TDZE Apt Elev	3800 411 422
--	------------------------	-----------------------------	---

RNAV (GPS) RWY 5

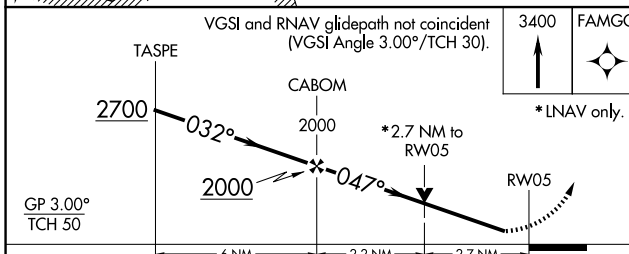
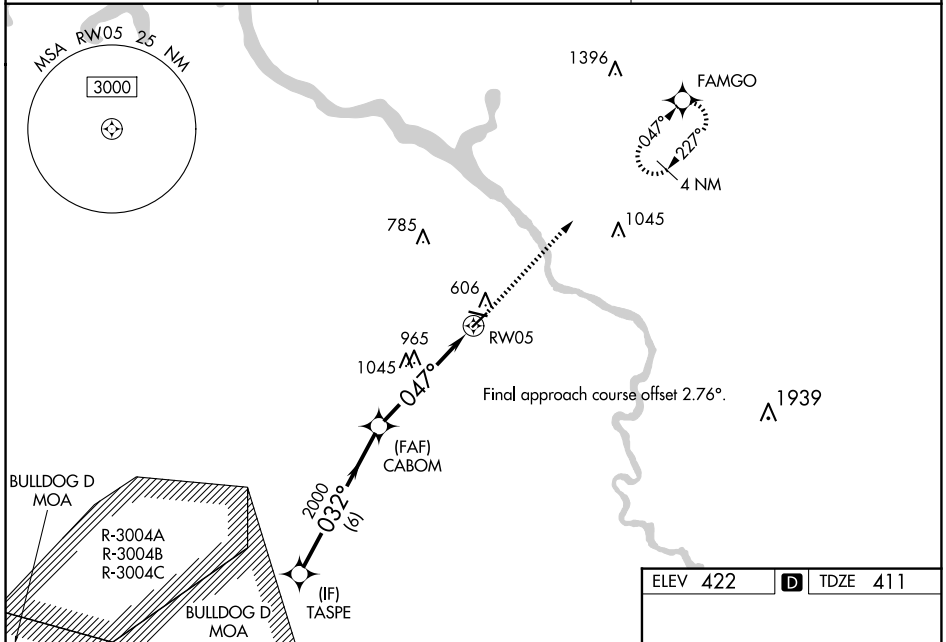
DANIEL FLD (DNL)

RNP APCH.

⚠ Baro-VNAV and VDP NA when using Augusta Rgnl at Bush Fld altimeter setting. Rwy 5 helicopter visibility reduction below 3/4 SM NA. For uncompensated Baro-VNAV systems, LNAV/VNAV NA below -15°C or above 54°C. When local altimeter not received use Augusta Rgnl at Bush Fld altimeter setting: Increase LPV DA to 716 feet, LNAV/VNAV DA to 1496 feet and all MDA 60 feet; Increase LPV all Cats visibility 1/2 SM, LNAV Cat A and Circling Cat C visibility 1/4 SM.

MISSED APPROACH: Climb to 3400 direct FAMGO and hold, continue climb-in-hold to 3400.

ASOS 135.275	AUGUSTA APP CON ★ 126.8 270.3	UNICOM 123.05 (CTAF) ①
------------------------	---	----------------------------------



ELEV 422	D TDZE 411
----------	-------------------

REIL Rwy 5, 11 and 23 ①
MIRL Rwy 5-23 and 11-29 ①

CATEGORY	A	B	C	D
LPV DA		661-3/4	250 (300-3/4)	
LNAV/VNAV DA		1441-4	1030 (1100-4)	
LNAV MDA	1280-1 869 (900-1)	1280-1 1/4 869 (900-1 1/4)	1280-2 1/2	869 (900-2 1/2)
C CIRCLING	1280-1 1/4	858 (900-1 1/4)	1360-2 3/4 938 (1000-2 3/4)	1360-3 938 (1000-3)

SE-4, 17 APR 2025 to 15 MAY 2025

SE-4, 17 APR 2025 to 15 MAY 2025