

OCEAN FOUR DEPARTURE

PATRICK SFB (KCOF)

COCOA BEACH, FLORIDA

[USAF]

DME required

Rwy	Knots	60	120	180	240	300	360
03/21	V/V(fpm)	210	420	630	840	1050	1260

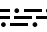
Minimum Climb Rate to 500

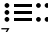
**TOP ALTITUDE
2000**

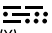
ATIS ★
119.175 273.5
CLNC DEL ★
118.4 289.4
GND CON ★
124.35 335.8
TOWER ★
133.75 269.375
ORLANDO DEP CON ★
132.65 281.425

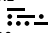
ORMOND BEACH
112.6 OMN 
Chan 73

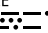
ORLANDO
112.2 ORL 
Chan 59

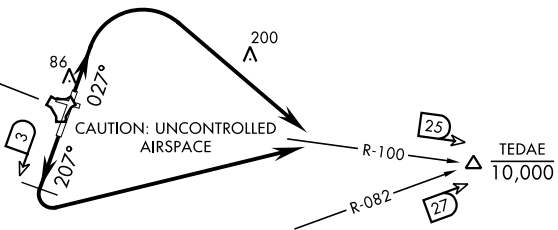
PATRICK
Chan 97 COF 
(115.0)

LAKELAND
116.0 LAL 
Chan 107

MELBOURNE
115.85 MLB 
Chan 105(Y)

TREASURE
117.3 TRV 
Chan 120

PAHOKEE
115.4 PHK 
Chan 101



NOTE: Chart not to scale.

DEPARTURE ROUTE DESCRIPTION

Expect clearance to filed altitude/flight level 10 minutes after departure.

TAKEOFF RWY 03: Climb on hdg 027°, then turn right to intercept COF TACAN R-100 to cross TEDAE (COF 25 DME/MLB VOR/DME 27 DME) at or below 10,000, maintain 2000 or higher as assigned.

TAKEOFF RWY 21: Climb on hdg 207° to COF TACAN 3 DME, then left turn to intercept COF TACAN R-100 to cross TEDAE (COF 25 DME/MLB VOR/DME 27 DME) at or below 10,000, maintain 2000 or higher as assigned.

OCEAN FOUR DEPARTURE

Amdt 1 28NOV24

COCOA BEACH, FLORIDA

PATRICK SFB (KCOF)

SE-3, 17 APR 2025 to 15 MAY 2025

SE-3, 17 APR 2025 to 15 MAY 2025