


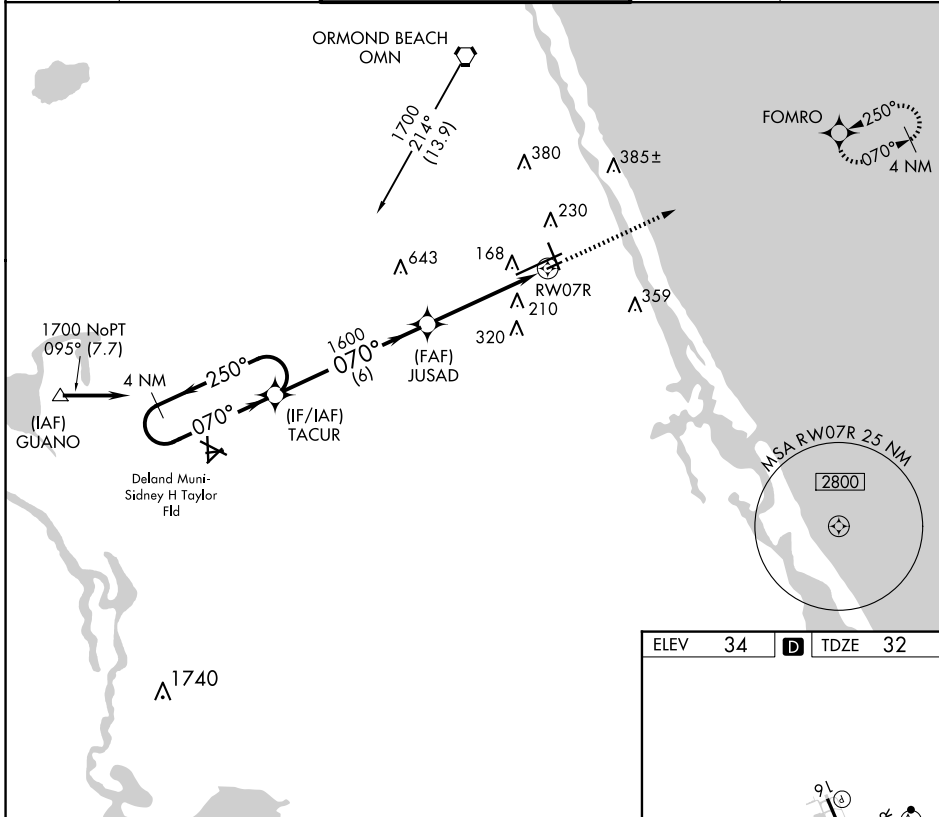
APP CRS	Rwy Idg	3195
070°	TDZE	32
	Apt Elev	34

RNAV (GPS) RWY 7R

DAYTONA BEACH INTL (DAB)

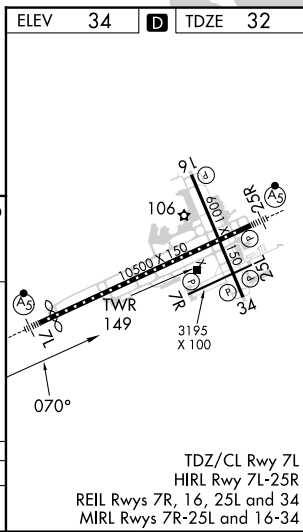
RNP APCH.		MISSED APPROACH: Climb to 1600 direct FOMRO WP and hold.
 Rwy 7R helicopter visibility reduction below 3/4 SM NA.		



ATIS 132.875	DAYTONA APP CON 125.8 269.075	DAYTONA TOWER 120.7 257.8	GND CON 121.9 348.6	CLNC DEL 119.3
------------------------	---	-------------------------------------	-------------------------------	--------------------------



SE-3, 17 APR 2025 to 15 MAY 2025

SE-3, 17 APR 2025 to 15 MAY 2025



4 NM Holding Pattern		VGSI and descent angles not coincident (VGSI Angle 3.00/TCH 48).		1600	FOMRO
TACUR		JUSAD			
1700 ← 250° 070° →		1600			
		RWY 07R			
		6 NM		4.7 NM	

CATEGORY	A	B	C	D
LNAV MDA	480-1	448 (500-1)	480-1 1/4 448 (500-1 1/4)	NA