

KZLOV TWO DEPARTURE (RNAV)  
(KZLOV2.WINNZ) 16MAY24

DETROIT DEP CON  
132.025 284.0  
D-ATIS 118.125  
CLNC DEL 120.65  
CPDLC  
GND CON  
121.8 (NW) 119.45 (NE)  
132.725 (SW) 119.25 (SE)  
METRO TOWER  
118.4 317.725 (Rwy 3L/R, 21L/R, 27R)  
128.75 317.725 (Rwy 27L)  
135.0 317.725 (Rwy 4L/R, 22L/R)

RNAV 1 - DME/DME/IRU or GPS.

**TOP ALTITUDE:**  
**10000**

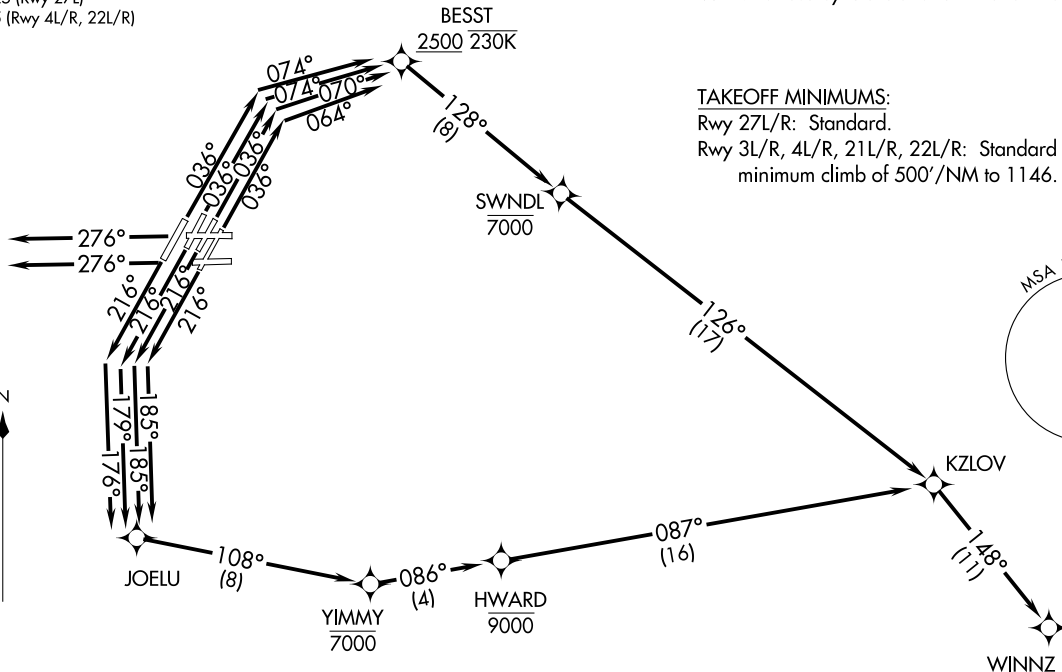
RADAR required.

NOTE: Turbojet departures at/above 10000,  
maintain 280K until advised by ATC.  
NOTE: For use by Cleveland terminal arrivals only.

**TAKEOFF MINIMUMS:**

Rwy 27L/R: Standard.

Rwy 3L/R, 4L/R, 21L/R, 22L/R: Standard with  
minimum climb of 500'/NM to 1146.



NOTE: Chart not to scale.

(CONTINUED ON FOLLOWING PAGE)

DETROIT, MICHIGAN  
DETROIT METRO WAYNE COUNTY (DTW)

(KZLOV2.WINNZ) 24137  
KZLOV TWO DEPARTURE (RNAV)

DETROIT METRO WAYNE COUNTY (DTW)  
DETROIT, MICHIGAN  
AL-119 (FAA)

DEPARTURE ROUTE DESCRIPTION



SEE ADDITIONAL REQUIREMENTS ON AAUP

TAKEOFF RUNWAY 3L: Climb on heading 036° to intercept course 070° to cross BESST at or above 2500 and at or below 230K, then on track 128° to cross SWNDL at or below 7000, then on track 126° to KZLOV, thence....

TAKEOFF RUNWAY 3R: Climb on heading 036° to intercept course 064° to cross BESST at or above 2500 and at or below 230K, then on track 128° to cross SWNDL at or below 7000, then on track 126° to KZLOV, thence....

TAKEOFF RUNWAYS 4L/R: Climb on heading 036° to intercept course 074° to cross BESST at or above 2500 and at or below 230K, then on track 128° to cross SWNDL at or below 7000, then on track 126° to KZLOV, thence....

TAKEOFF RUNWAYS 21L/R: Climb on heading 216° to intercept course 185° to JOELU, then on track 108° to cross YIMMY at or below 7000, then on track 086° to cross HWARD at or below 9000, then on track 087° to KZLOV, thence....

TAKEOFF RUNWAY 22L: Climb on heading 216° to intercept course 179° to JOELU, then on track 108° to cross YIMMY at or below 7000, then on track 086° to cross HWARD at or below 9000, then on track 087° to KZLOV, thence....

TAKEOFF RUNWAY 22R: Climb on heading 216° to intercept course 176° to JOELU, then on track 108° to cross YIMMY at or below 7000, then on track 086° to cross HWARD at or below 9000, then on track 087° to KZLOV, thence....

TAKEOFF RUNWAYS 27L/R: Climb on heading 276° or as assigned by ATC, for RADAR vectors to KZLOV, thence....

....on track 148° to WINNZ. Maintain ATC assigned altitude, expect filed altitude ten minutes after departure.

EC-1, 17 APR 2025 to 15 MAY 2025

EC-1, 17 APR 2025 to 15 MAY 2025