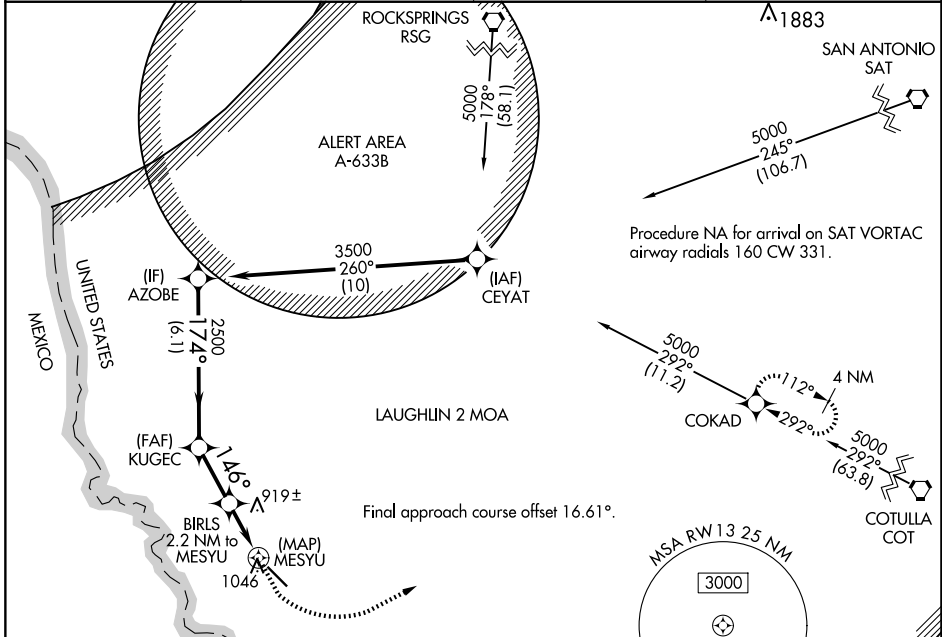


WAAS CH <b>65942</b> <b>W13A</b>	APP CRS <b>146°</b>	Rwy Idg TDZE Apt Elev	<b>5506</b> <b>887</b> <b>887</b>
--	------------------------	-----------------------------	---

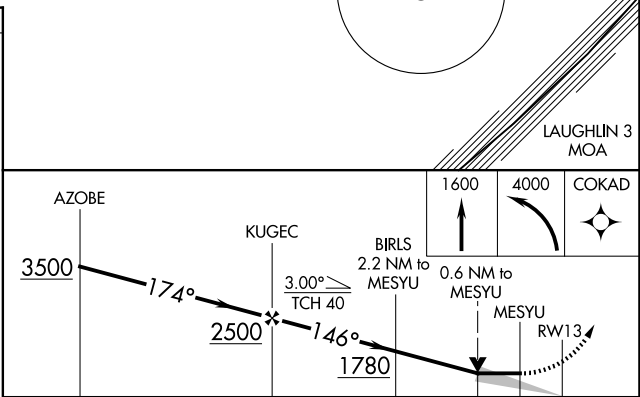
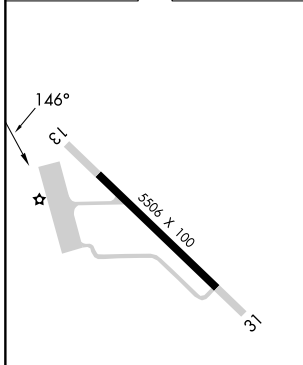
# RNAV (GPS) RWY 13

MAVERICK COUNTY MEML INTL (5T9)

RNP APCH.		MISSED APPROACH: Climb to 1600 then climbing left turn to 4000 direct COKAD and hold.	
AWOS-3 <b>119.175</b>	KDLF ATIS ★ <b>114.4 269.9</b>	DEL RIO APP CON ★ <b>127.75 326.2</b>	UNICOM <b>122.8</b> (CTAF) <b>0</b>



ELEV 887	TDZE 887
----------	----------



CATEGORY	A	B	C	D
LP MDA	1260-1 373 (400-1)			NA
LNAV MDA	1360-1	473 (500-1)	1360-1 $\frac{3}{8}$ 473 (500-1 $\frac{3}{8}$ )	NA

SC-3, 17 APR 2025 to 15 MAY 2025

SC-3, 17 APR 2025 to 15 MAY 2025