

BOTCH ONE DEPARTURE (RNAV)
(BOTCH1 .BOTCH) 17APR25

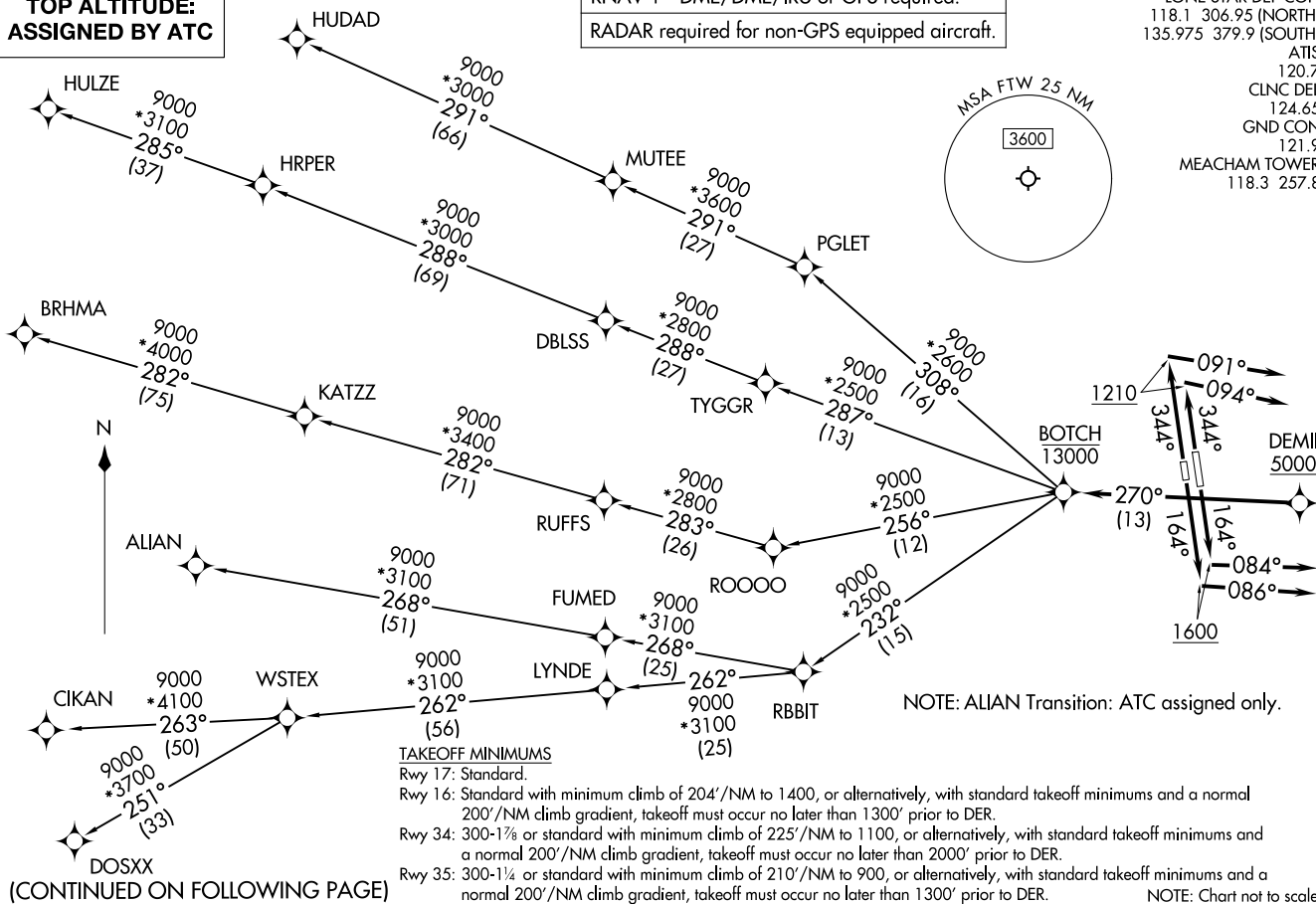
BOTCH ONE DEPARTURE (RNAV)

FORT WORTH, TEXAS
FORT WORTH MEACHAM INTL (FTW)**TOP ALTITUDE:
ASSIGNED BY ATC**

RNAV 1 - DME/DME/IRU or GPS required.

RADAR required for non-GPS equipped aircraft.

LONE STAR DEP CON
118.1 306.95 (NORTH)
135.975 379.9 (SOUTH)
ATIS
120.7
CLNC DEL
124.65
GND CON
121.9
MEACHAM TOWER
118.3 257.8



(CONTINUED ON FOLLOWING PAGE)

BOTCH1 .BOTCH) 25107

AL-159 (FAA)

FORT WORTH MEACHAM INTL (FTW)
FORT WORTH, TEXAS



DEPARTURE ROUTE DESCRIPTION

TAKEOFF RUNWAY 16: Climb on heading 164° to 1600, then on heading 084° or as assigned by ATC, for vectors to cross DEMII at or above 5000, thence. . .
TAKEOFF RUNWAY 17: Climb on heading 164° to 1600, then on heading 086° or as assigned by ATC, for vectors to cross DEMII at or above 5000, thence. . .
TAKEOFF RUNWAY 34: Climb on heading 344° to 1210, then on heading 094° or as assigned by ATC, for vectors to cross DEMII at or above 5000, thence. . .
TAKEOFF RUNWAY 35: Climb on heading 344° to 1210, then on heading 091° or as assigned by ATC, for vectors to cross DEMII at or above 5000, thence. . .

. . .on track 270° to cross BOTCH at or below 13000, then on (transition). Maintain ATC assigned altitude, expect filed altitude 10 minutes after departure.

- ALIAN TRANSITION (BOTCH1 .ALIAN)
- BRHMA TRANSITION (BOTCH1 .BRHMA)
- CIKAN TRANSITION (BOTCH1 .CIKAN)
- DOSXX TRANSITION (BOTCH1 .DOSXX)
- HUDAD TRANSITION (BOTCH1 .HUDAD)
- HULZE TRANSITION (BOTCH1 .HULZE)
- WSTEX TRANSITION (BOTCH1 .WSTEX)

SC-2, 17 APR 2025 to 15 MAY 2025

SC-2, 17 APR 2025 to 15 MAY 2025