

(JPOOL7.TTT) 24305

JOE POOL SEVEN DEPARTURE

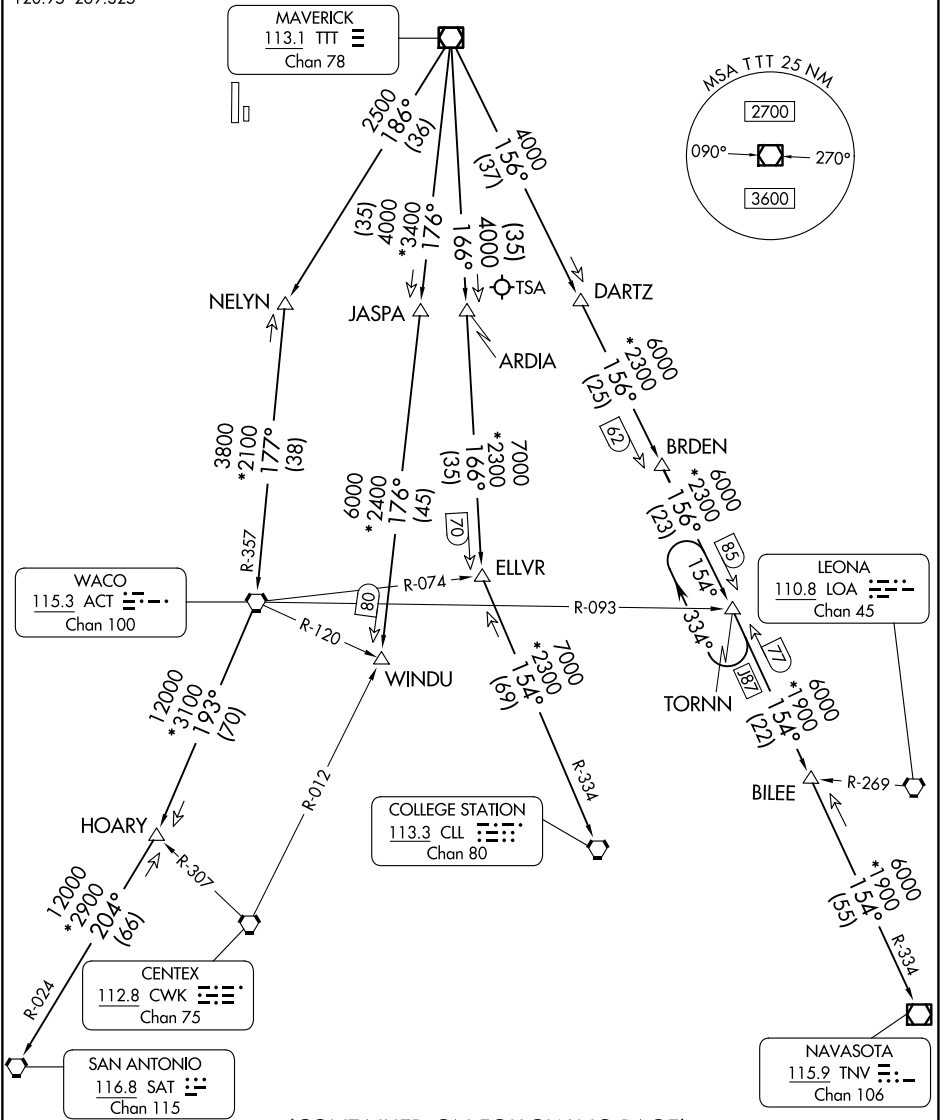
FORT WORTH NAS JRB (CARSWELL FLD) (NFW)
FORT WORTH, TEXAS

LONE STAR DEP CON
125.8 257.95
ATIS ★
351.675
CLNC DEL
126.4 254.325
GND CON
121.675 279.575
NAVY FORT WORTH TOWER ★
120.95 269.325

RADAR and DME required.

TOP ALTITUDE:
ASSIGNED BY ATC

TAKEOFF MINIMUMS
Refer to appropriate military service directives.



(CONTINUED ON FOLLOWING PAGE)

JOE POOL SEVEN DEPARTURE

(JPOOL7.TTT) 25JAN24

FORT WORTH, TEXAS
FORT WORTH NAS JRB (CARSWELL FLD) (NFW)

SC-2, 17 APR 2025 to 15 MAY 2025

SC-2, 17 APR 2025 to 15 MAY 2025



DEPARTURE ROUTE DESCRIPTION

When entering controlled airspace, fly assigned heading for RADAR vectors to appropriate route. Maintain ATC assigned altitude.

- COLLEGE STATION TRANSITION (JPOOL7.CLL): From over TTT VOR/DME on TTT R-166 to ELLVR, then on CLL R-334 to CLL VORTAC.
- ELLVR TRANSITION (JPOOL7.ELLVR): From over TTT VOR/DME on TTT R-166 to ELLVR.
- HOARY TRANSITION (JPOOL7.HOARY): From over TTT VOR/DME on TTT R-186 to NELYN, then on ACT R-357 to ACT VORTAC, then on ACT R-193 to HOARY.
- NAVASOTA TRANSITION (JPOOL7.TNV): From over TTT VOR/DME on TTT R-156 to TORNN, then on TNV R-334 to TNV VOR/DME.
- SAN ANTONIO TRANSITION (JPOOL7.SAT): From over TTT VOR/DME on TTT R-186 to NELYN, then on ACT R-357 to ACT VORTAC, then on ACT R-193 to HOARY, then on SAT R-024 to SAT VORTAC.
- TORNN TRANSITION (JPOOL7.TORNN): From over TTT VOR/DME on TTT R-156 to TORNN.
- WACO TRANSITION (JPOOL7.ACT): From over TTT VOR/DME on TTT R-186 to NELYN, then on ACT R-357 to ACT VORTAC.
- WINDU TRANSITION (JPOOL7.WINDU): From over TTT VOR/DME on TTT R-176 to WINDU.

- NOTE: COLLEGE STATION Transition: For piston and turboprop aircraft destined to HOU, EFD, GLS, or LBX. Also for all other aircraft types destined to all other Houston terminal area airports except IAH, CXO, DWH, T78 or 6R3.
- NOTE: ELLVR Transition: For turbojet aircraft destined to HOU, EFD, GLS, or LBX.
- NOTE: SAN ANTONIO Transition: For aircraft overflying Centex and San Antonio.
- NOTE: TORNN Transition: Only for aircraft destined IAH, CXO, DWH, T78 or 6R3.
- NOTE: WACO Transition: For aircraft inbound to Waco or Gray terminal area airports.
- NOTE: WINDU Transition: For aircraft inbound to Austin or San Antonio terminal area.