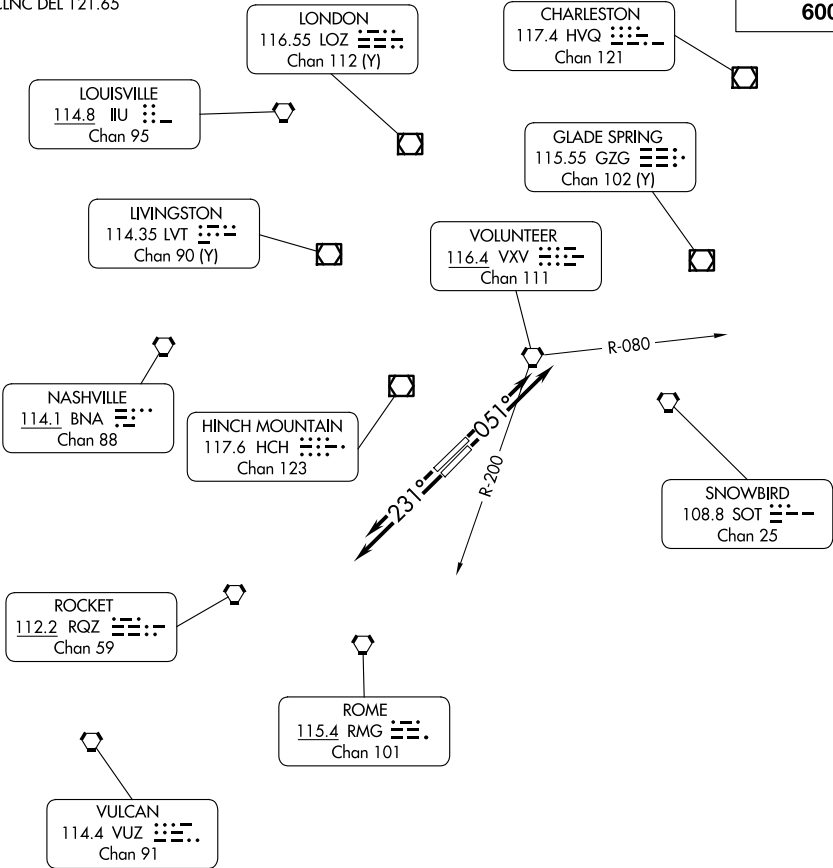


ATIS 128.35  
CLNC DEL 121.65

TOP ALTITUDE:  
6000



TAKEOFF MINIMUMS:  
Rwy 5L/R, 23L/R: Standard.

NOTE: RADAR required.  
NOTE: Chart not to scale.



DEPARTURE ROUTE DESCRIPTION

TAKEOFF RUNWAY 5L/5R: Climb on heading 051° or as assigned for vectors to filed route, thence....  
TAKEOFF RUNWAY 23L/R: Climb on heading 231° or as assigned for vectors to filed route, thence....  
....maintain 6000 (or assigned lower altitude). Expect clearance to requested altitude/flight level ten minutes after departure.  
LOST COMMUNICATIONS: If filed route is between the VXV R-080 and the VXV R-200 and radio contact is not established with departure control prior to reaching 6000 continue climb to 9000 before turning on course.

SE-1, 17 APR 2025 to 15 MAY 2025

SE-1, 17 APR 2025 to 15 MAY 2025