

NDB RWY 24

LAKEHURST MAXFIELD FLD,
(JOINT BASE MC GUIRE DIX LAKEHURST) (KNEL)

NDB NEL 396	APCH CRS 241°	Rwy Ldg 5002
		TDZE 101
		Arpt Elev 101

AL-223 [USN]

MISSED APPROACH: Climb to 700, then climbing left turn to 2000 and intercept NEL NDB 061° bearing to PAMRE and hold.

▼ * When ALS inop, increase, CAT AB vis to 1 mile, CAT CD vis to 1¼ miles.

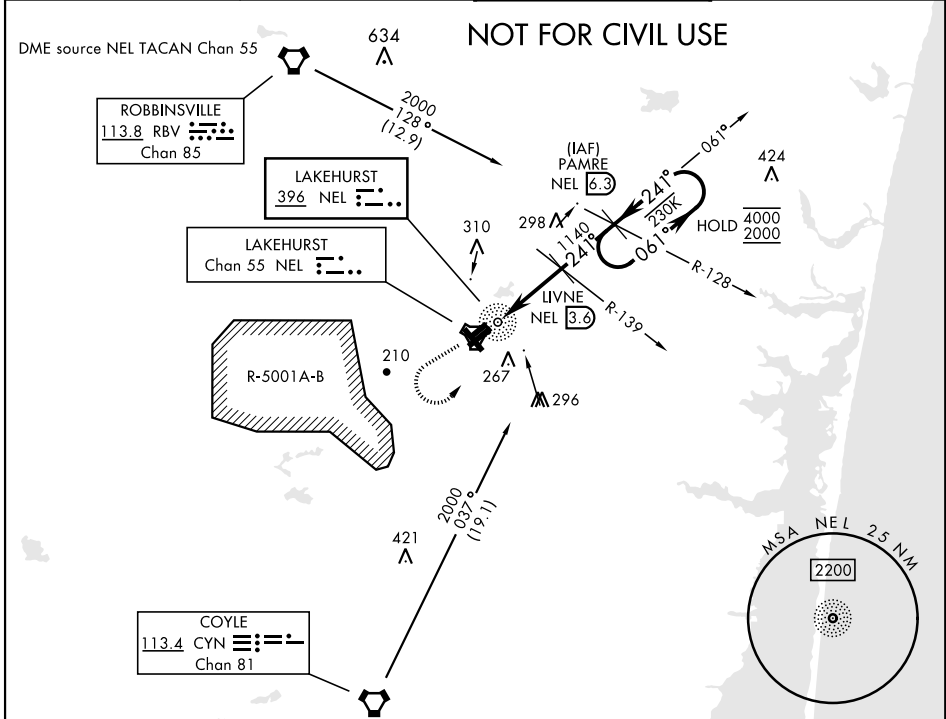


ATIS ★
276.525

MC GUIRE APP CON
126.475 363.8

TOWER ★
127.775 360.2

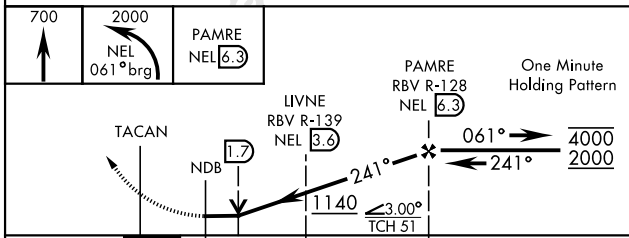
GND CON
118.375 307.375



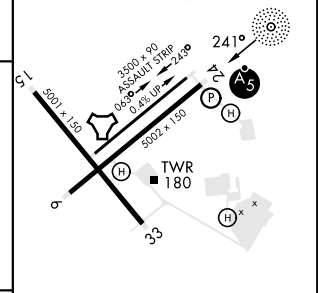
NE-2, 17 APR 2025 to 15 MAY 2025

NE-2, 17 APR 2025 to 15 MAY 2025

EMERG SAFE ALT 100 NM 4100



ELEV 101	TDZE 101
----------	----------



CATEGORY	A	B	C	D
S-24 *	540-¾	439	(500-¾)	
CIRCLING	660-1 559 (600-1)	720-1 619 (700-1)	720-1¼ 619 (700-1¼)	720-2 619 (700-2)

HIRL Rwy 6-24	
MRL Rwy 063°-243°	
FAF to MAP 5.4 NM	
Knots	60 90 120 150 180
Min:Sec	5:24 3:36 2:42 2:10 1:48

NDB RWY 24