

# OCEAN THREE ARRIVAL

AL-237 (FAA)

LOS ANGELES INTL (LAX)  
LOS ANGELES, CALIFORNIA

SW-3, 17 APR 2025 to 15 MAY 2025

## ARRIVAL ROUTE DESCRIPTION

From over JLI VORTAC on JLI R-263 and OCN R-083 to VISTA, then on OCN R-083 to CYNDE DME, then on OCN R-083 to OCN VORTAC, then on OCN R-272 and VTU R-114 to SHILY INT, then on SLI R-251 to DOYLE INT, then on VTU R-129 to EXERT INT, then on LAX R-246 to MERMA INT. Expect RADAR vectors to final approach course for Runways 6 or 7.

SOCAL APP CON  
128.1 281.4  
D-ATIS ARR  
133.8

FILLMORE  
112.5 FM  
Chan 72

SANTA MONICA  
110.8 SMO  
Chan 45

LOS ANGELES  
113.6 LAX  
Chan 83

VENTURA  
116.55 VTU  
Chan 112(V)

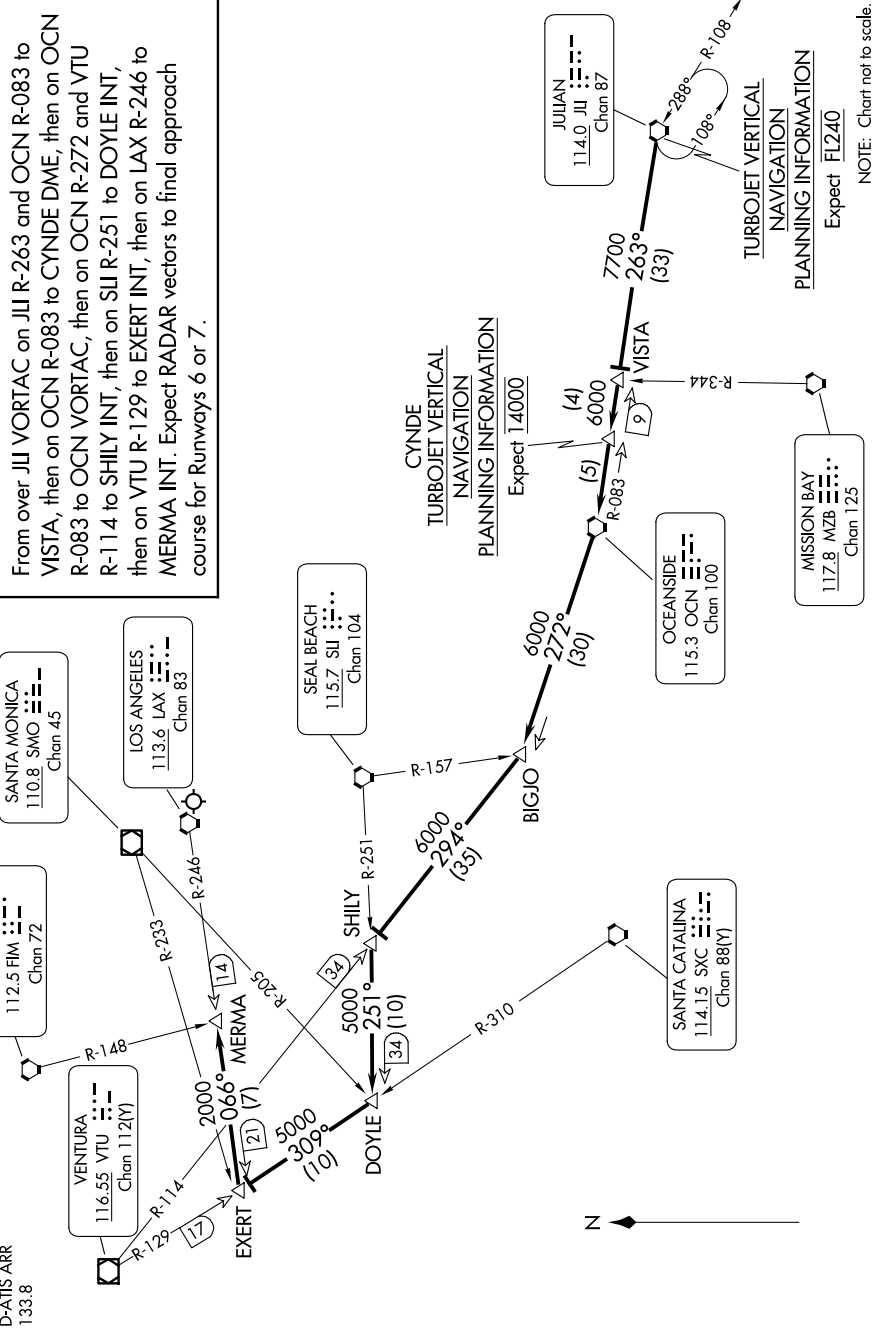
SEAL BEACH  
115.7 SLI  
Chan 104

OCEANSIDE  
115.3 OCN  
Chan 100

SANTA CATALINA  
114.15 SCX  
Chan 88(Y)

MISSION BAY  
117.8 MZB  
Chan 125

JULIAN  
114.0 JLI  
Chan 87



TURBOJET VERTICAL  
NAVIGATION  
PLANNING INFORMATION  
Expect FL240

CYNDE VERTICAL  
NAVIGATION  
PLANNING INFORMATION  
Expect 14000

NOTE: Chart not to scale.

# OCEAN THREE ARRIVAL

LOS ANGELES, CALIFORNIA  
LOS ANGELES INTL (LAX)

SW-3, 17 APR 2025 to 15 MAY 2025