

SE-3, 17 APR 2025 to 15 MAY 2025

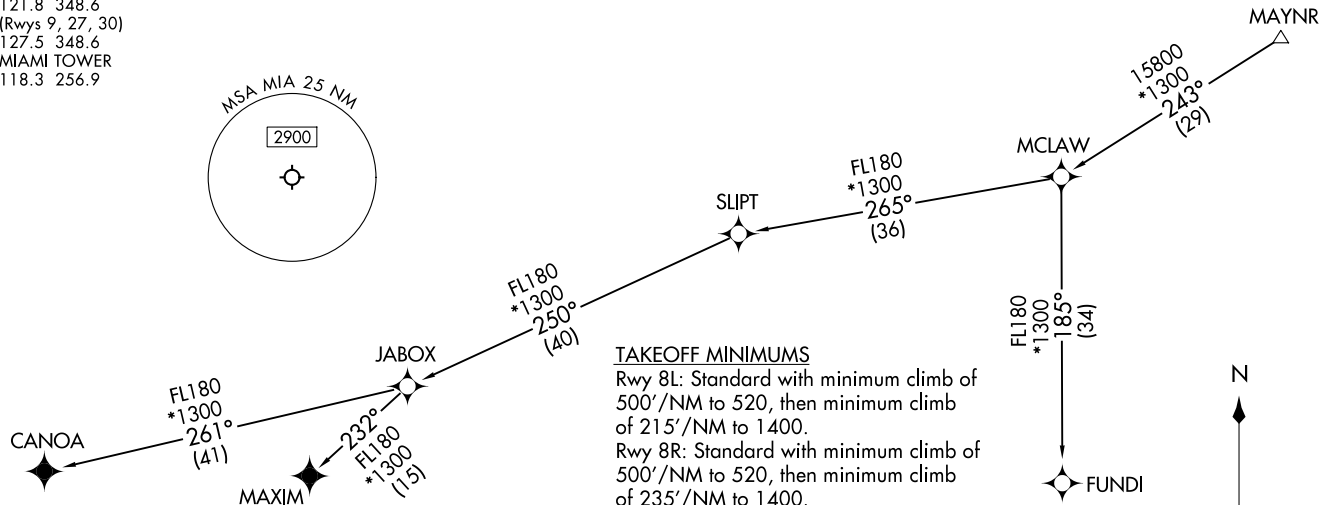
SE-3, 17 APR 2025 to 15 MAY 2025

MAYNR THREE DEPARTURE (RNAV) Transition Routes
(MAYNR3.MAYNR) 31OCT24

MIAMI DEP CON
125.5 354.1
D-ATIS
133.675
CLNC DEL
135.35
CPDLC
GND CON
(Rwys 8L/R, 12, 26L/R)
121.8 348.6
(Rwys 9, 27, 30)
127.5 348.6
MIAMI TOWER
118.3 256.9

**TOP ALTITUDE:
5000**

RNAV 1 - DME/DME/IRU or GPS.
From SLIPT to MAXIM: RNAV 1 - GPS.
From SLIPT to CANOA: RNAV 1 - GPS.
RADAR required for non-GPS equipped aircraft.
RADAR required.



NOTE: Jet aircraft only.
NOTE: Accelerate to 250K until leaving
10000, if unable, advise ATC.

TAKEOFF MINIMUMS

Rwy 8L: Standard with minimum climb of
500'/NM to 520, then minimum climb
of 215'/NM to 1400.

Rwy 8R: Standard with minimum climb of
500'/NM to 520, then minimum climb
of 235'/NM to 1400.

Rwy 9: Standard with minimum climb of
500'/NM to 520, then minimum climb
of 240'/NM to 1400.

Rwy 12: Standard with minimum climb of
500'/NM to 520, then minimum climb
of 230'/NM to 1400.

Rwys 26L/R, 27, 30: Standard with
minimum climb of 500'/NM to 520.

(CONTINUED ON FOLLOWING PAGE)

NOTE: Chart not to scale.

(MAYNR3.MAYNR) 24305
MAYNR THREE DEPARTURE (RNAV) Transition Routes

AL-257 (FAA)

MIAMI INTL (MIA)
MIAMI, FLORIDA

MIAMI, FLORIDA
MIAMI INTL (MIA)



DEPARTURE ROUTE DESCRIPTION

SEE ADDITIONAL REQUIREMENTS ON AAUP

TAKEOFF RUNWAY 8L: Climb on heading 092° to intercept course 144° to BALLR, then on track 183° to MYNNT, then on track 192° to RUUMM, then on track 215° to cross AUSTI at or above 5000, thence. . . .

TAKEOFF RUNWAY 8R: Climb on heading 092° to intercept course 146° to BALLR, then on track 183° to MYNNT, then on track 192° to RUUMM, then on track 215° to cross AUSTI at or above 5000, thence. . . .

TAKEOFF RUNWAY 9: Climb on heading 092° to intercept course 136° to BALLR, then on track 183° to MYNNT, then on track 192° to RUUMM, then on track 215° to cross AUSTI at or above 5000, thence. . . .

TAKEOFF RUNWAY 12: Climb on heading 124° to 520, then direct to BALLR, then on track 183° to MYNNT, then on track 192° to RUUMM, then on track 215° to cross AUSTI at or above 5000, thence. . . .

TAKEOFF RUNWAY 26L: Climb on heading 272° to intercept course 260° to KSENO, then on track 231° to COOZY, then on track 185° to HAMAK, then on track 125° to LONZO, then on track 202° to cross AUSTI at or above 5000, thence. . . .

TAKEOFF RUNWAY 26R: Climb on heading 272° to intercept course 258° to KSENO, then on track 231° to COOZY, then on track 185° to HAMAK, then on track 125° to LONZO, then on track 202° to cross AUSTI at or above 5000, thence. . . .

TAKEOFF RUNWAY 27: Climb on heading 272° to 520, then direct KSENO, then on track 231° to COOZY, then on track 185° to HAMAK, then on track 125° to LONZO, then on track 202° to cross AUSTI at or above 5000, thence. . . .

TAKEOFF RUNWAY 30: Climb on heading 304° to intercept course 254° to KSENO, then on track 231° to COOZY, then on track 185° to HAMAK, then on track 125° to LONZO, then on track 202° to cross AUSTI at or above 5000, thence. . . .

. . . .on track 202° to MAYNR, then on assigned transition, maintain 5000. Expect clearance to filed altitude within 10 minutes after departure.

- CANOA TRANSITION (MAYNR3.CANOA)
- FUNDI TRANSITION (MAYNR3.FUNDI)
- MAXIM TRANSITION (MAYNR3.MAXIM)

SE-3, 17 APR 2025 to 15 MAY 2025

SE-3, 17 APR 2025 to 15 MAY 2025