

## ORSKY THREE DEPARTURE

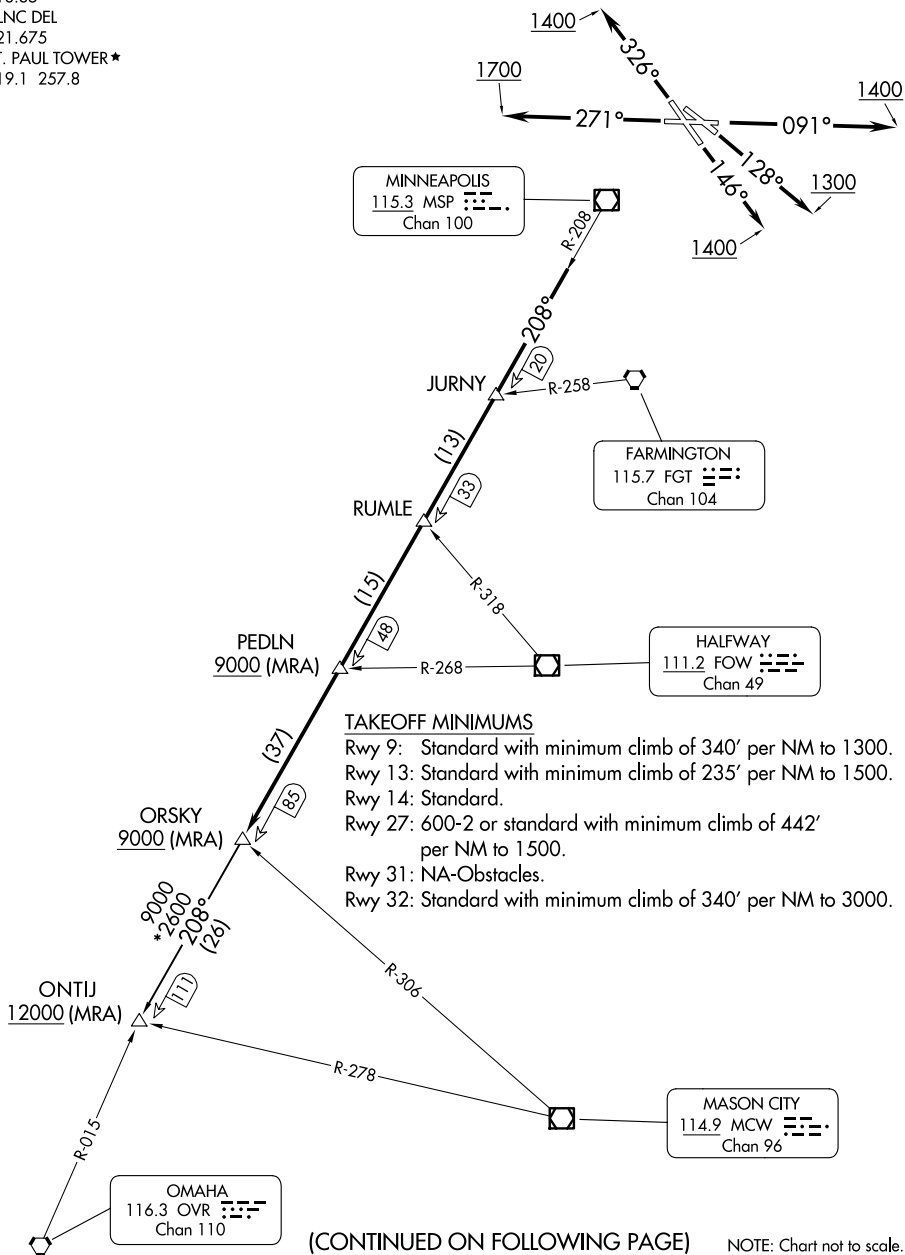
ST PAUL DOWNTOWN HOLMAN FLD (STP)

ST PAUL, MINNESOTA

MINNEAPOLIS DEP CON  
121.2 335.65  
ATIS  
118.35  
CLNC DEL  
121.675  
ST. PAUL TOWER★  
119.1 257.8

RADAR required.

**TOP ALTITUDE:  
ASSIGNED BY ATC**



(CONTINUED ON FOLLOWING PAGE)

NOTE: Chart not to scale.

## ORSKY THREE DEPARTURE

(ORSKY3.ORSKY) 08SEP22

ST PAUL, MINNESOTA  
ST PAUL BOWLING TOWN HALLMANFIELD (GTR)

ST PAUL DOWNTOWN HOLMAN FLD (STP)

NC-1, 17 APR 2025 to 15 MAY 2025

NC-1, 17 APR 2025 to 15 MAY 2025



DEPARTURE ROUTE DESCRIPTION

TAKEOFF RUNWAY 9: Climb on heading 091° to 1400 for RADAR vectors to assigned fix on MSP R-208, then on depicted route to ORSKY. Thence . . . .

TAKEOFF RUNWAY 13: Climb on heading 128° to 1300 for RADAR vectors to assigned fix on MSP R-208, then on depicted route to ORSKY. Thence . . . .

TAKEOFF RUNWAY 14: Climb on heading 146° to 1400 for RADAR vectors to assigned fix on MSP R-208, then on depicted route to ORSKY. Thence . . . .

TAKEOFF RUNWAY 27: Climb on heading 271° to 1700 for RADAR vectors to assigned fix on MSP R-208, then on depicted route to ORSKY. Thence . . . .

TAKEOFF RUNWAY 32: Climb on heading 326° to 1400 for RADAR vectors to assigned fix on MSP R-208, then on depicted route to ORSKY. Thence . . . .

. . . .on transition or assigned route. Expect filed altitude 10 minutes after departure.

ONTIJ TRANSITION (ORSKY3.ONTIJ): From over ORSKY INT on MSP R-208 to ONTIJ INT.

NC-1, 17 APR 2025 to 15 MAY 2025

NC-1, 17 APR 2025 to 15 MAY 2025