

NC-1, 17 APR 2025 to 15 MAY 2025

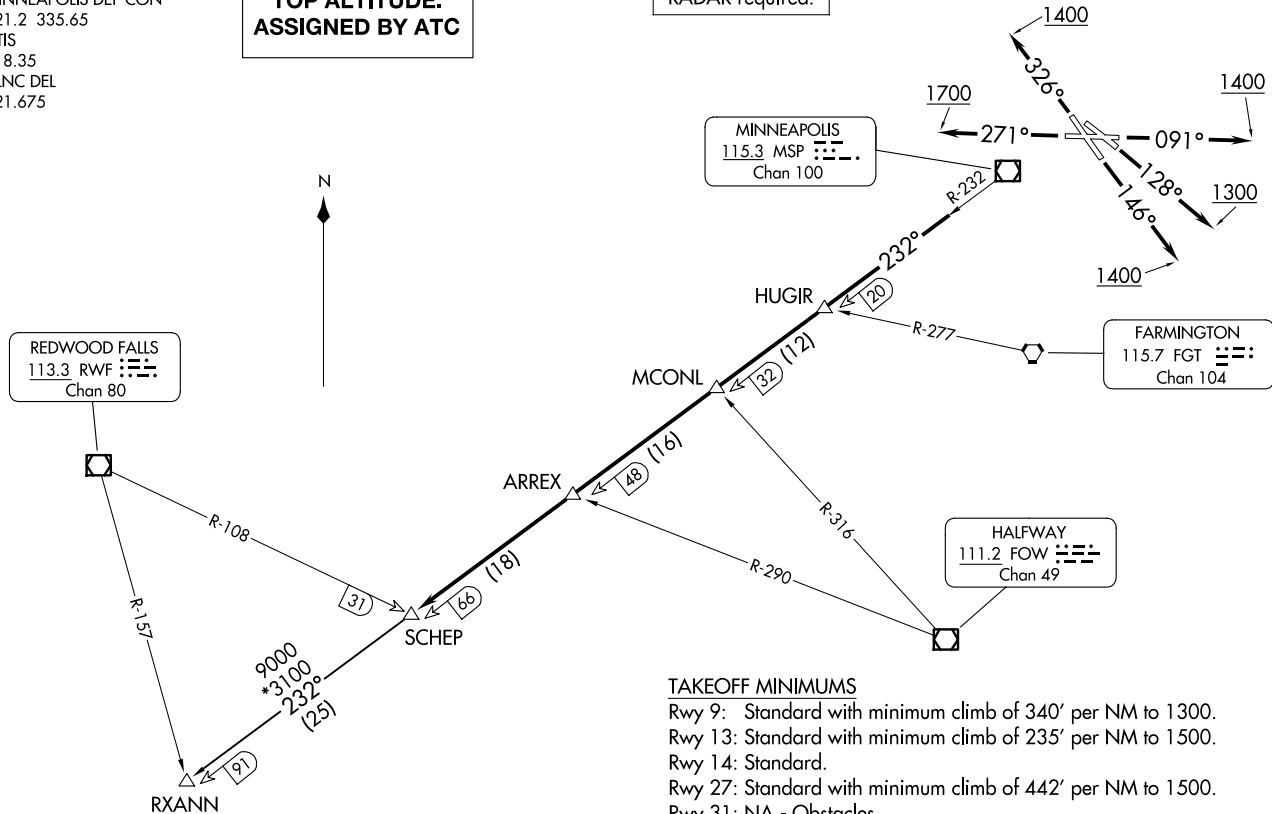
RADAR required.

**TOP ALTITUDE:  
ASSIGNED BY ATC**

MINNEAPOLIS DEP CON  
121.2 335.65  
ATIS  
118.35  
CLNIC DEL  
121.675

SCHEP ONE DEPARTURE  
(SCHEP1, SCHEP1) 08SEP22

ST PAUL DOWNTOWN HOLMAN FLD (STP)  
ST PAUL, MINNESOTA



**TAKEOFF MINIMUMS**

- Rwy 9: Standard with minimum climb of 340' per NM to 1300.
- Rwy 13: Standard with minimum climb of 235' per NM to 1500.
- Rwy 14: Standard.
- Rwy 27: Standard with minimum climb of 442' per NM to 1500.
- Rwy 31: NA - Obstacles.
- Rwy 32: Standard with minimum climb of 340' per NM to 3000.

(CONTINUED ON FOLLOWING PAGE)

NOTE: Chart not to scale.

NC-1, 17 APR 2025 to 15 MAY 2025



DEPARTURE ROUTE DESCRIPTION

TAKEOFF RUNWAY 9: Climb on heading 091° to 1400 for RADAR vectors to assigned fix on MSP R-232, then on depicted route to SCHEP, thence . . . .

TAKEOFF RUNWAY 13: Climb on heading 128° to 1300 for RADAR vectors to assigned fix on MSP R-232, then on depicted route to SCHEP, thence . . . .

TAKEOFF RUNWAY 14: Climb on heading 146° to 1400 for RADAR vectors to assigned fix on MSP R-232, then on depicted route to SCHEP, thence . . . .

TAKEOFF RUNWAY 27: Climb on heading 271° to 1700 for RADAR vectors to assigned fix on MSP R-232, then on depicted route to SCHEP, thence . . . .

TAKEOFF RUNWAY 32: Climb on heading 326° to 1400 for RADAR vectors to assigned fix on MSP R-232, then on depicted route to SCHEP, thence . . . .

. . . .on transition. Maintain ATC assigned altitude. Expect filed altitude 10 minutes after departure.

RXANN TRANSITION (SCHEP1.RXANN): From over SCHEP INT on MSP R-232 to RXANN INT.

NC-1, 17 APR 2025 to 15 MAY 2025

NC-1, 17 APR 2025 to 15 MAY 2025