

MT. CLEMENS, MICHIGAN

TACAN Z RWY 1

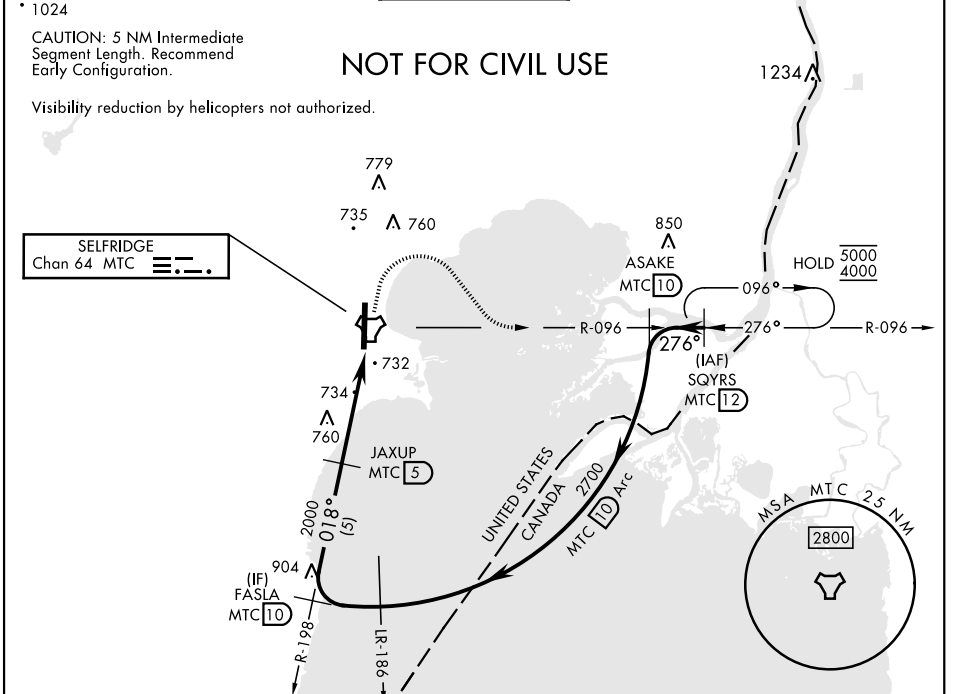
TACAN MTC Chan 64	APCH CRS 018°	Rwy ldg TDZE Arprt Elev 9000 580 580	[USAF]	SELFRIDGE ANGB (KMTC)
-----------------------------	-------------------------	--------------------------------------------------------------------------	--------	-----------------------

▼ * When ALS inop, increase CAT AB RVR to 55, vis to 1 mile, CAT CDE vis to 1 3/8 miles.
 ** Circling not authorized W of Rwy 01-19.

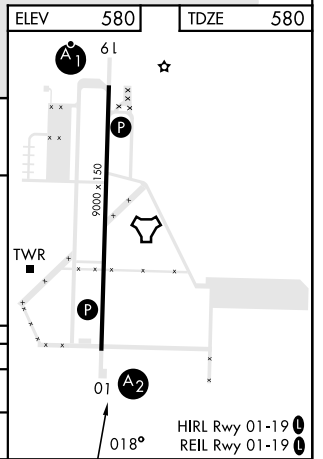
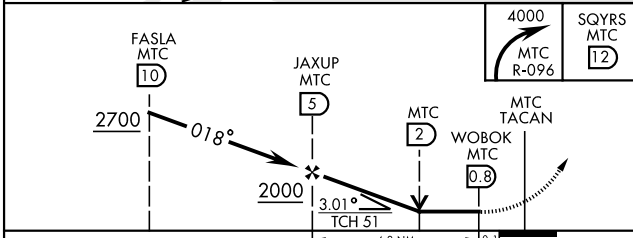
SALS

MISSED APPROACH: Climbing right turn to 4000, intercept MTC R-096 to SQYRS and hold, continue to climb-in-hold to 4000.

ATIS 125.325 270.1	SELFRIDGE APP CON 119.6 318.2	SELFRIDGE TOWER ★ 120.15(CTAF) 225.4	GND CON 128.3 275.8	CLNC DEL 128.3 275.8
------------------------------	-----------------------------------------	------------------------------------------------	-------------------------------	--------------------------------



ELEV	580	TDZE	580
------	-----	------	-----



CATEGORY	A	B	C	D	E
S-01*	1040/40	460 (500-3/4)	1040/55	460	(500-1)
CIRCLING**	1040-1	460 (500-1)	1040-1 1/2 460 (500-1 1/2)	1140-2	560 (600-2)

MT. CLEMENS, MICHIGAN 42° 37' N-82° 50' W SELFRIDGE ANGB (KMTC)

Amdt 4 26DEC24

TACAN Z RWY 1

EC-1, 17 APR 2025 to 15 MAY 2025

EC-1, 17 APR 2025 to 15 MAY 2025