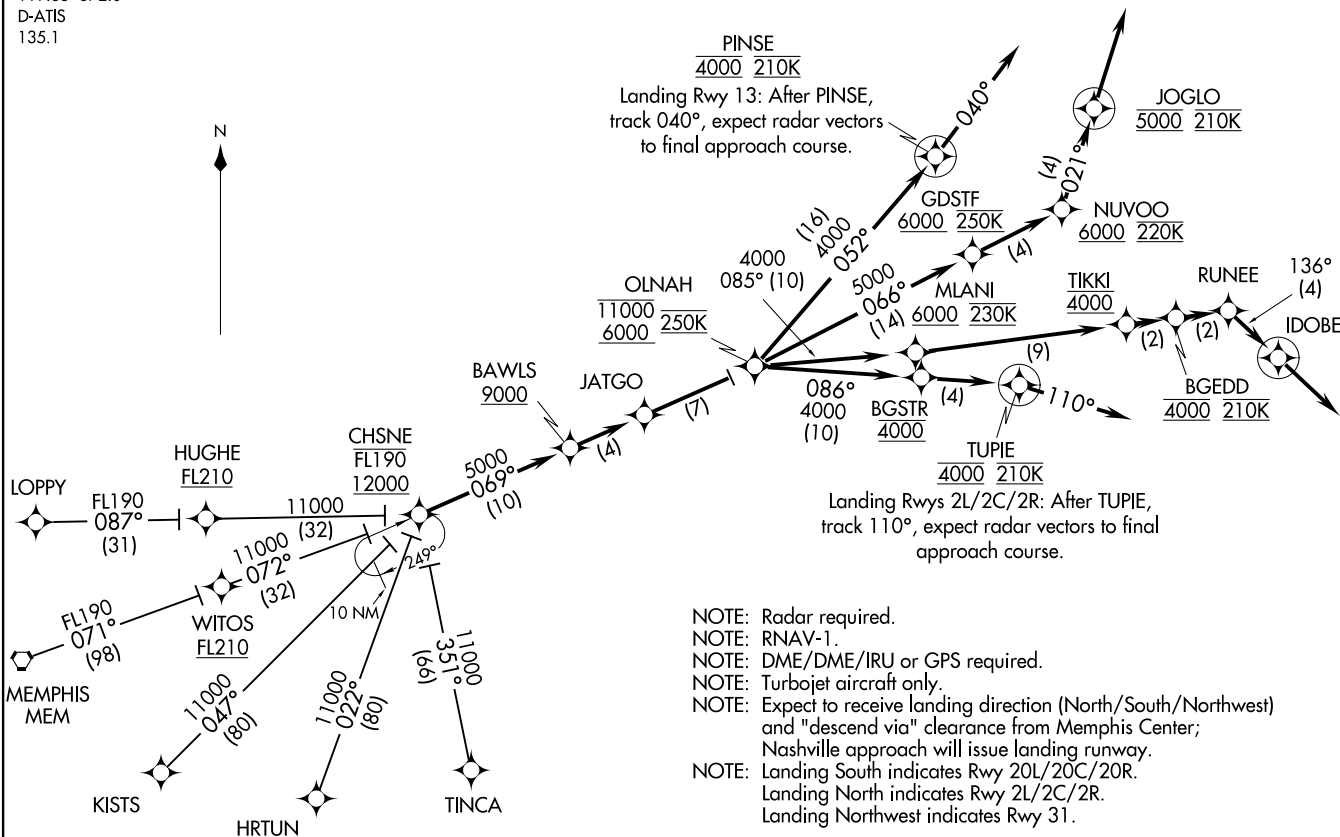


NASHVILLE, TENNESSEE  
NASHVILLE INTL (BNA)



NOTE: Radar required.  
NOTE: RNAV-1.  
NOTE: DME/DME/IRU or GPS required.  
NOTE: Turbojet aircraft only.  
NOTE: Expect to receive landing direction (North/South/Northwest) and "descend via" clearance from Memphis Center; Nashville approach will issue landing runway.  
NOTE: Landing South indicates Rwy 20L/20C/20R.  
Landing North indicates Rwy 2L/2C/2R.  
Landing Northwest indicates Rwy 31.

NOTE: Chart not to scale.

(NARRATIVE ON FOLLOWING PAGE)

NASHVILLE INTL (BNA)  
NASHVILLE, TENNESSEE

AL-282 (FAA)

SE-1. 17 APR 2025 to 15 MAY 2025

SE-1, 17 APR 2025 to 15 MAY 2025

ARRIVAL ROUTE DESCRIPTION

HRTUN TRANSITION (HRTUN.CHSNE2)  
KISTS TRANSITION (KISTS.CHSNE2)  
LOPPY TRANSITION (LOPPY.CHSNE2)  
MEMPHIS TRANSITION (MEM.CHSNE2)  
TINCA TRANSITION (TINCA.CHSNE2)

From over CHSNE on track 069° to cross BAWLS at/above 9000, then on track 069° to JATGO, then on track 069° to cross OLNAH at/above 6000 and at/below 11000 and at 250K, then on assigned runway transition.

LANDING NORTH (RWY 2L/2C/2R): From over OLNAH on track 086° to cross BGSTR at 4000, then on track 086° to cross TUPIE at 4000 and at 210K, then on track 110°. Expect radar vectors to final approach course.

LANDING RWY 13: From over OLNAH on track 052° to cross PINSE at 4000 and at 210K, then on track 040°. Expect radar vectors to final approach course.

LANDING SOUTH (RWY 20L/20C/20R): From over OLNAH on track 066° to cross GDSTF at/above 6000 and at 250K, then on track 066° to cross NUVOO at/above 6000 and at 220K, then on track 021° to cross JOGLO at 5000 and at 210K, then on track 021°. Expect radar vectors to final approach course.

LANDING NORTHWEST (RWY 31): From over OLNAH on track 085° to cross MLANI at/above 6000 and at 230K, then on track 085° to cross TIKKI at 4000, then on track 085° to cross BGEDD at 4000 and at 210K, then on track 085° to RUNEE, then on track 136° to IDOBE, then on track 136°. Expect radar vectors to final approach course.