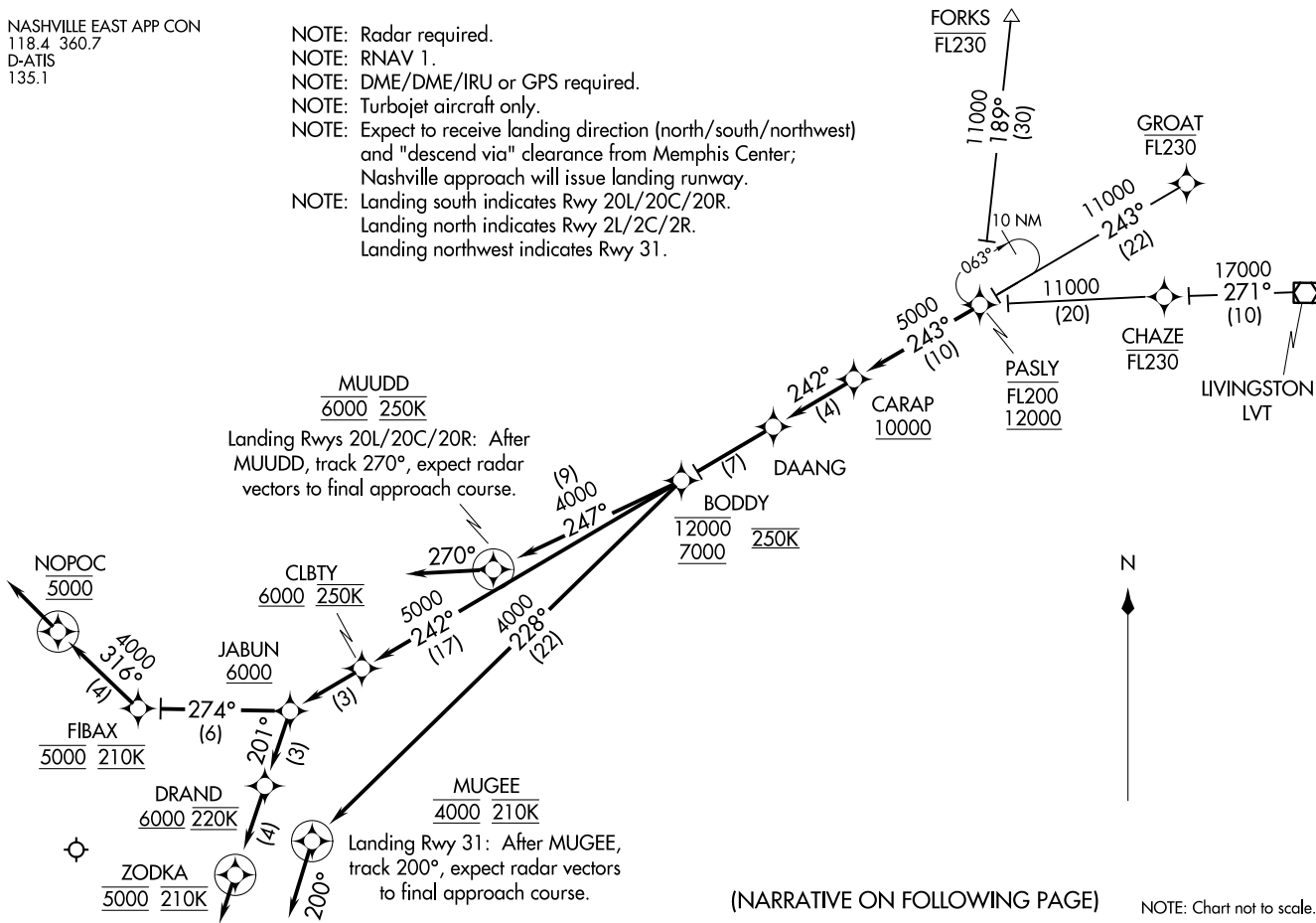


NASHVILLE EAST APP CON
118.4 360.7
D-ATIS
135.1

- NOTE: Radar required.
NOTE: RNAV 1.
NOTE: DME/DME/IRU or GPS required.
NOTE: Turbojet aircraft only.
NOTE: Expect to receive landing direction (north/south/northwest) and "descend via" clearance from Memphis Center; Nashville approach will issue landing runway.
NOTE: Landing south indicates Rwy 20L/20C/20R.
NOTE: Landing north indicates Rwy 2L/2C/2R.
NOTE: Landing northwest indicates Rwy 31.



ARRIVAL ROUTE DESCRIPTION

FORKS TRANSITION (FORKS.PASLY4)
GROAT TRANSITION (GROAT.PASLY4)
LIVINGSTON TRANSITION (LVT.PASLY4)

From over PASLY on track 243° to cross CARAP at/above 10000, then on track 242° to DAANG, then on track 242° to cross BODDY at/above 7000 and at/below 12000 and at 250K, then on assigned runway transition.

LANDING NORTH RWYS 2L/2C/2R: From over BODDY on track 242° to cross CLBTY at/above 6000 and at 250K, then on track 242° to cross JABUN at/above 6000, then on track 201° to cross DRAND at/above 6000 and at 220K, then on track 201° to cross ZODKA at 5000 and at 210K, then on track 201°. Expect radar vectors to final approach course.

LANDING SOUTH RWYS 20L/20C/20R: From over BODDY on track 247° to cross MUUDD at 6000 and at 250K, then on track 270°. Expect radar vectors to final approach course.

LANDING NORTHWEST RWY 31: From over BODDY on track 228° to cross MUGEE at 4000 and at 210K, then on track 200°. Expect radar vectors to final approach course.

LANDING RWY 13: From over BODDY on track 242° to cross CLBTY at/above 6000 and at 250K, then on track 242° to cross JABUN at/above 6000, then on track 274° to cross FIBAX at 5000 and at 210K, then on track 316° to cross NOPOC at 5000, then on track 316°. Expect radar vectors to final approach course.