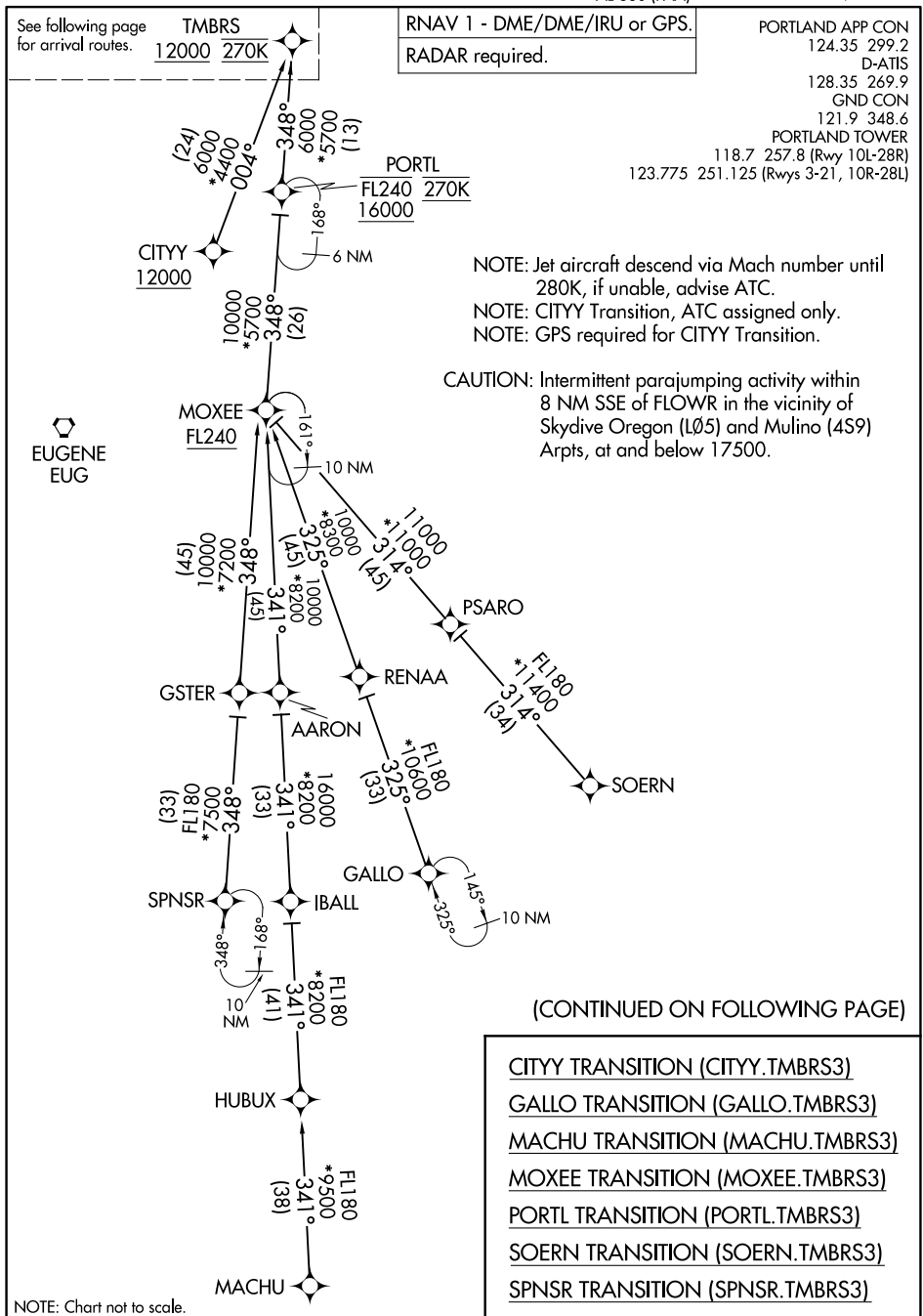
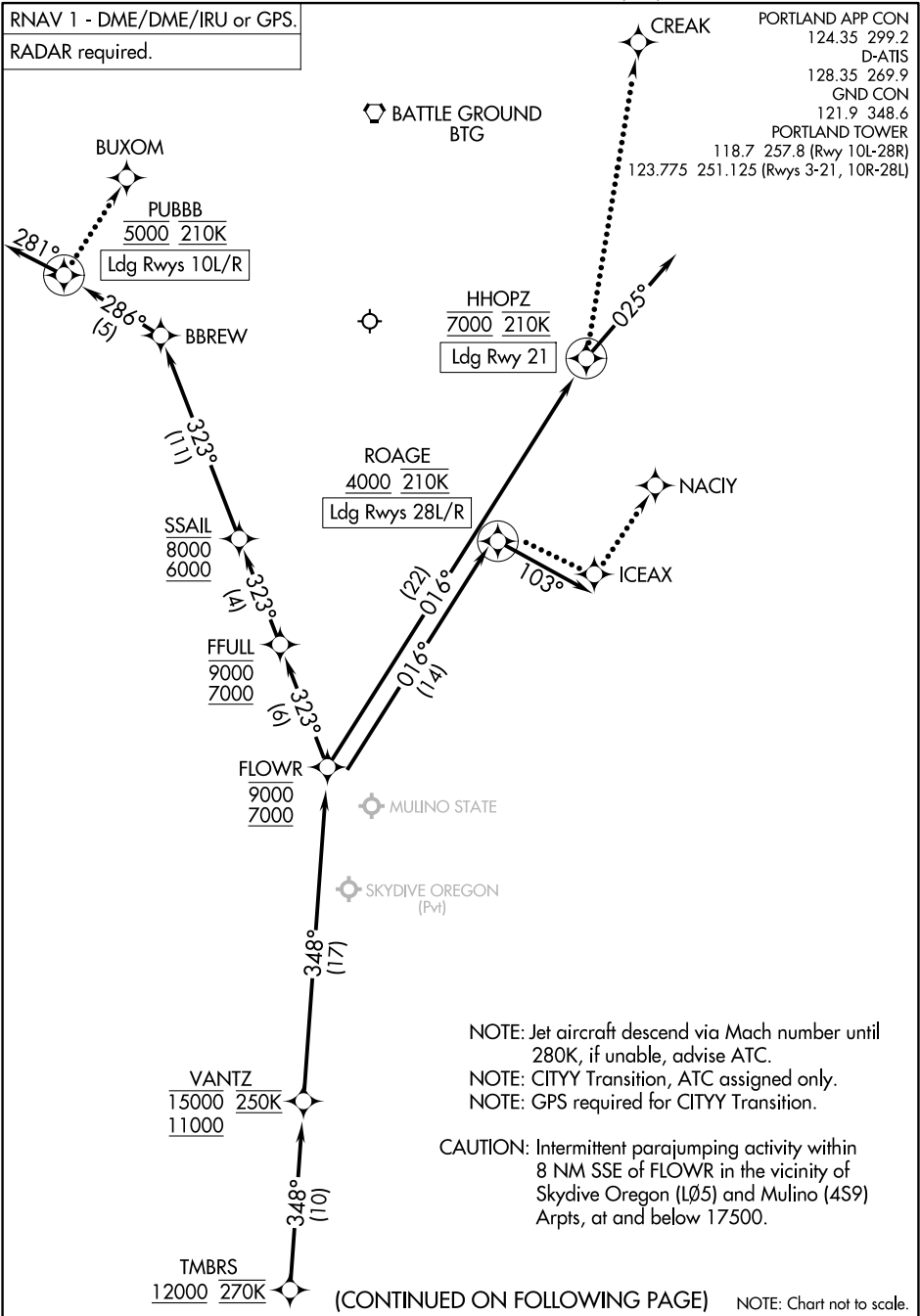


PORTLAND INTL (PDX)
PORTLAND, OREGONPORTLAND, OREGON
PORTLAND INTL (PDX)

NW-1, 17 APR 2025 to 15 MAY 2025

RNAV 1 - DME/DME/IRU or GPS.

RADAR required.



ARRIVAL ROUTE DESCRIPTION

From TMBRS on track 348° to cross VANTZ between 11000 and 15000 and at 250K, then on track 348° to cross FLOWR between 7000 and 9000.

LANDING RUNWAYS 10L/R: From FLOWR on track 323° to cross FFULL between 7000 and 9000, then on track 323° to cross SSAIL between 6000 and 8000, then on track 323° to BBREW, then on track 286° to cross PUBBB at 5000 and at 210K, then on track 281°. Expect RADAR vectors to final approach course.

LANDING RUNWAY 21: From FLOWR on track 016° to cross HHOPZ at 7000 and at 210K, then on track 025°. Expect RADAR vectors to final approach course.

LANDING RUNWAYS 28L/R: From FLOWR on track 016° to cross ROAGE at or above 4000 and at 210K, then on track 103°. Expect RADAR vectors to final approach course.

LOST COMMUNICATIONS

Maintain Rwy transition terminus altitude until established on approach procedure.

RUNWAYS 10L/R: After PUBBB turn right to BUXOM and proceed on the ILS or LOC RWY 10L approach.

RUNWAY 21: After HHOPZ, turn left to CREAK and proceed on the LOC/DME RWY 21 approach.

RUNWAYS 28L/R: After ROAGE, proceed to ICEAX , then to NACIY and proceed on the ILS or LOC RWY 28R approach.

NW-1, 17 APR 2025 to 15 MAY 2025

NW-1, 17 APR 2025 to 15 MAY 2025