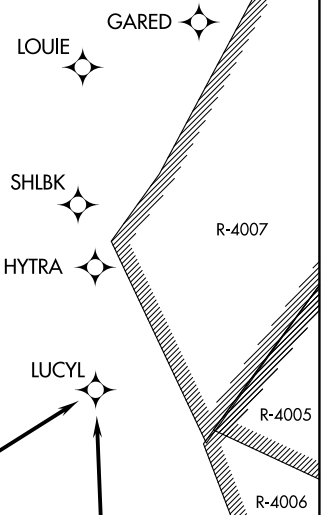
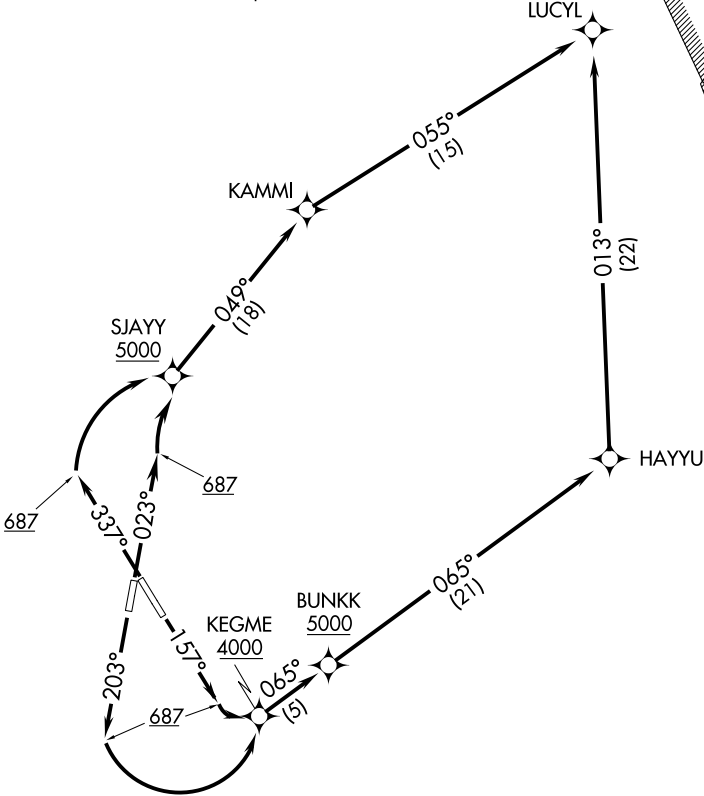


ATIS 119.15 263.025
CLNC DEL
127.55 348.6
GND CON
121.9 348.6
RICHMOND TOWER
121.1 257.8
POTOMAC DEP CON
126.4 282.375

TOP ALTITUDE:
5000



TAKEOFF MINIMUMS:
Rwy 2: Standard with minimum climb of 500' per NM to 687, then minimum climb of 372' per NM to 5000.
Rwys 16, 20: Standard with minimum climb of 500' per NM to 687, then minimum climb of 480' per NM to 4000.
Rwy 34: Standard with minimum climb of 500' per NM to 687, then minimum climb of 353' per NM to 5000.



NOTE: RNAV 1.
NOTE: DME/DME/IRU or GPS required.
NOTE: RADAR required for non-GPS equipped aircraft.

(NARRATIVE ON FOLLOWING PAGE)

NOTE: Chart not to scale.



DEPARTURE ROUTE DESCRIPTION

TAKEOFF RUNWAY 2: Climb on heading 023° to 687 MSL, then climbing right turn direct to cross SJAYY at or above 5000, then on depicted route to LUCYL, thence. . . .

TAKEOFF RUNWAY 16: Climb on heading 157° to 687 MSL, then climbing left turn direct to cross KEGME at or above 4000, then on track 065° to cross BUNKK at or above 5000, then on depicted route to LUCYL, thence. . . .

TAKEOFF RUNWAY 20: Climb on heading 203° to 687 MSL, then climbing left turn direct to cross KEGME at or above 4000, then on track 065° to cross BUNKK at or above 5000, then on depicted route to LUCYL, thence. . . .

TAKEOFF RUNWAY 34: Climb on heading 337° to 687 MSL, then climbing right turn direct to cross SJAYY at or above 5000, then on depicted route to LUCYL, thence. . . .

. . . .maintain 5000, expect filed altitude within ten (10) minutes after departure.

NE-3, 17 APR 2025 to 15 MAY 2025

NE-3, 17 APR 2025 to 15 MAY 2025