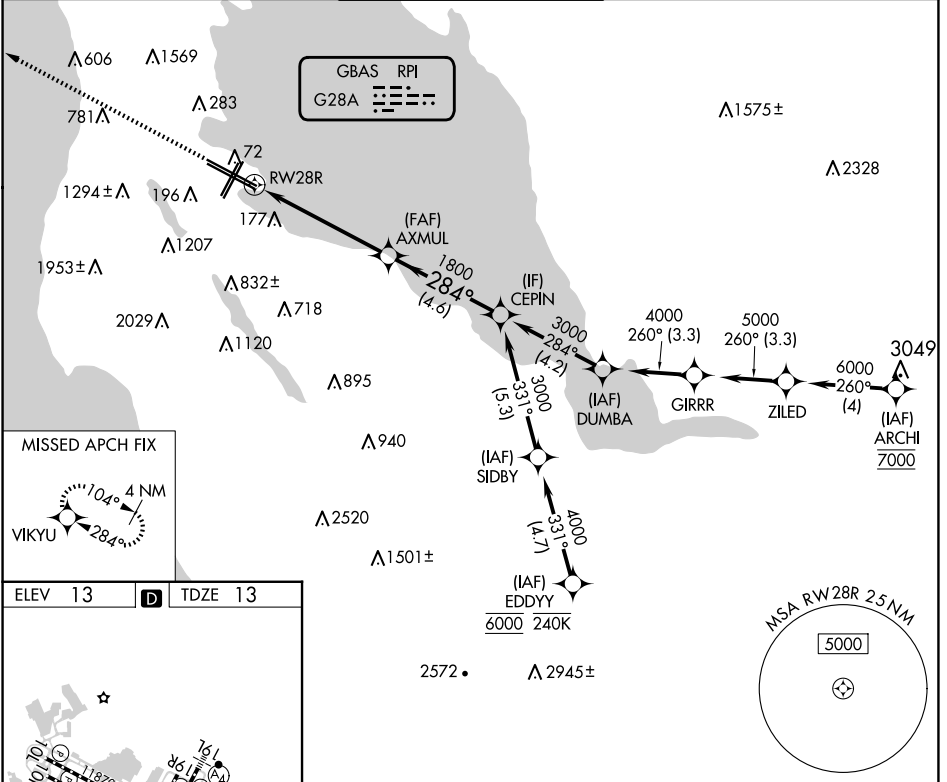


GBAS CH 20626 G28A	APP CRS 284°	Rwy Idg 11236 TDZE 13 Apt Elev 13
--	------------------------	--

GLS RWY 28R

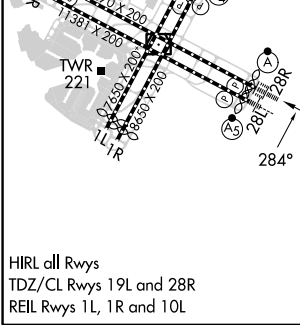
SAN FRANCISCO INTL (SFO)

RNP APCH-GPS.		ALSF-2		MISSED APPROACH: Climb to 3200 direct VIKYU and hold.		
<p>Simultaneous approach authorized. Simultaneous operations require use of vertical guidance; maintain last assigned altitude until established on glidepath. Use of FD or AP required during simultaneous operations. Autopilot coupled approach NA below 213 feet.</p>				<p>*Missed approach requires minimum climb of 350 feet per NM to 1900; if unable to meet climb gradient, see RNAV (GPS) Z RWY 28R.</p>		
D-ATIS 113.7 115.8 118.85	NORCAL APP CON 134.5 338.2	SAN FRANCISCO TOWER 120.5 269.1		GND CON 121.8	CLNC DEL 118.2	CPDLC



SW-2, 17 APR 2025 to 15 MAY 2025

SW-2, 17 APR 2025 to 15 MAY 2025



3200	VIKYU	VGSi and GLS glidepath not coincident (VGSi Angle 3.00/TCH 68).		CEPIN
		AXMUL		
		1800	284°	3000
			1800	
		5.4 NM		4.6 NM
				GP 3.00° TCH 55
CATEGORY	A	B	C	D
GLS DA*	213/18 200 (200-1/2)			