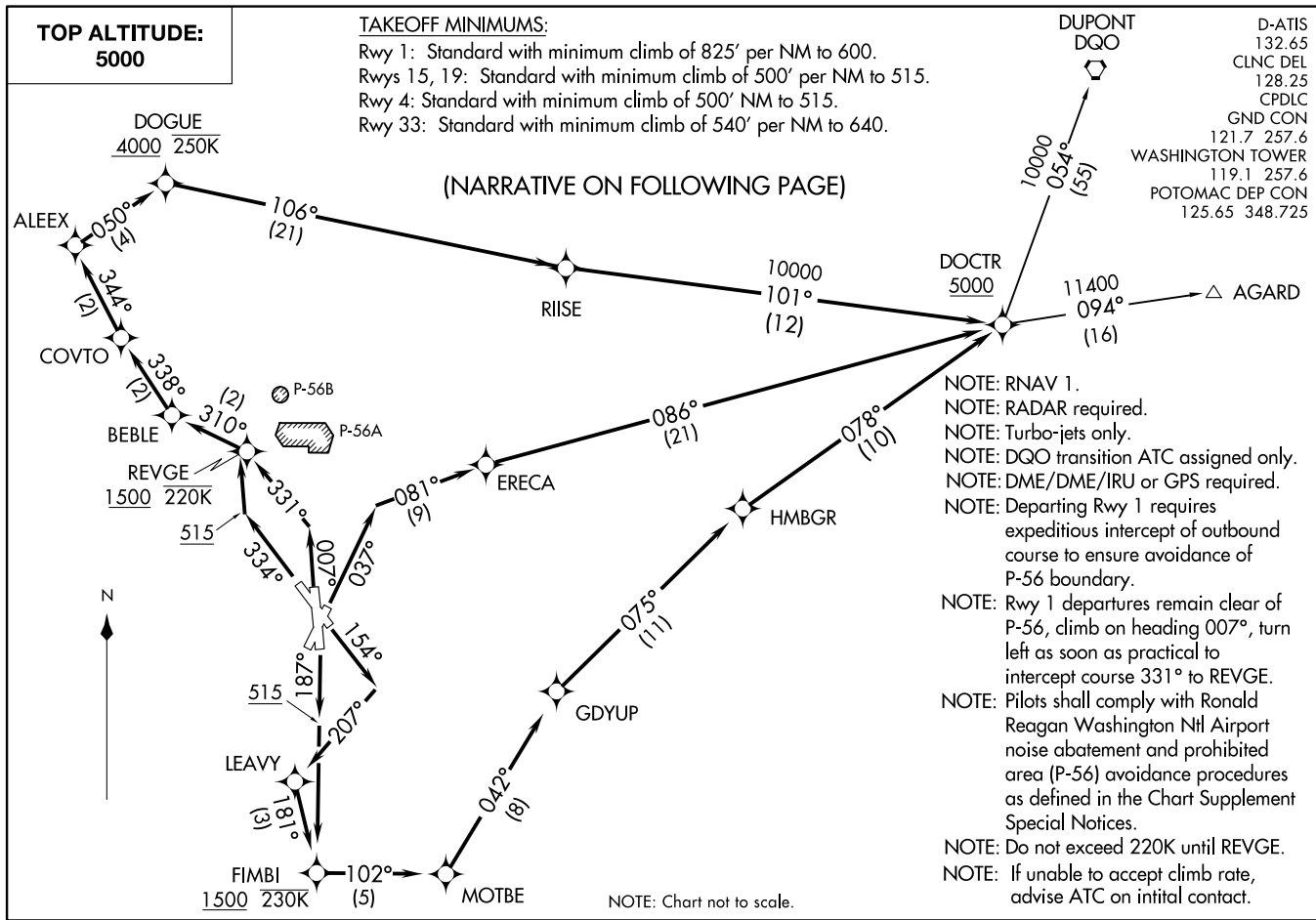


DOCTR FIVE DEPARTURE (RNAV)
(DOCTR5.DOCR) 31 DEC 20

WASHINGTON, DC
RONALD REAGAN WASHINGTON NTL (DCA)

(DOCTR5.DOCR) 21112
DOCTR FIVE DEPARTURE (RNAV)

AL-43 (FAA)
RONALD REAGAN WASHINGTON NTL (DCA)
WASHINGTON, DC



▼		DEPARTURE ROUTE DESCRIPTION	
TAKEOFF RUNWAY 1:		Climb on heading 007° to intercept course 331° to REVGE, cross REVGE at or above 1500 and at or below 220K, then on track 310° to BEBLE, then on track 338° to COVTO, then on track 344 to ALEEX, then on track 050° to DOGUE, cross DOGUE at or above 4000 and at or below 250K, then on track 106° to RIISE, then on track 101° to DOCTR, cross DOCTR at or above 5000, thence....	
TAKEOFF RUNWAY 4:		Climb on heading 037° to intercept course 081° to ERECA, then on track 086° to DOCTR, cross DOCTR at or above 5000, thence....	
TAKEOFF RUNWAY 15:		Climb on heading 154° to intercept course 207° to LEAVY, then on track 181° to FIMBI, cross FIMBI at or above 1500 and at or below 230K, then on track 102° to MOTBE, then on track 042° to GDYUP, then on track 075° to HMBGR, then on track 078° to DOCTR, cross DOCTR at or above 5000, thence....	
TAKEOFF RUNWAY 19:		Climb on heading 187° to 515, then direct FIMBI, cross FIMBI at or above 1500 and at or below 230 K, then on track 102° to MOTBE, then on track 042° to GDYUP, then on track 075° to HMBGR, then on track 078° to DOCTR, cross DOCTR at or above 5000, thence....	
TAKEOFF RUNWAY 33:		Climb on heading 334° to 515, then direct REVGE, cross REVGE at or above 1500 and at or below 220K, then on track 310° to BEBLE, then on track 339° to COVTO, then on track 344° to ALEEX, then on track 050° to DOGUE, cross DOGUE at or above 4000 and at or below 250K, then on track 106° to RIISE, then on track 101° to DOCTR, cross DOCTR at or above 5000, thence....	
....on assigned transition.		Maintain 5000. Expect clearance to filed altitude within ten (10) minutes after departure.	
AGARD TRANSITION (DOCTR5.AGARD)			
DUPONT TRANSITION (DOCTR5.DQO)			