

LIFRR TWO DEPARTURE (RNAV)

HOMESTEAD, FLORIDA

**TOP ALTITUDE:
ASSIGNED BY ATC**

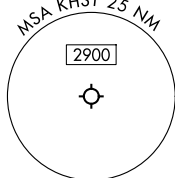
RNAV 1 - DME/DME/IRU or GPS.

RADAR required for non-GPS equipped aircraft.

NOTE: Accelerate to 250K until leaving 10000,
if unable, advise ATC.

NOTE: Jet aircraft only.

NOTE: For aircraft filed at or below 12000.

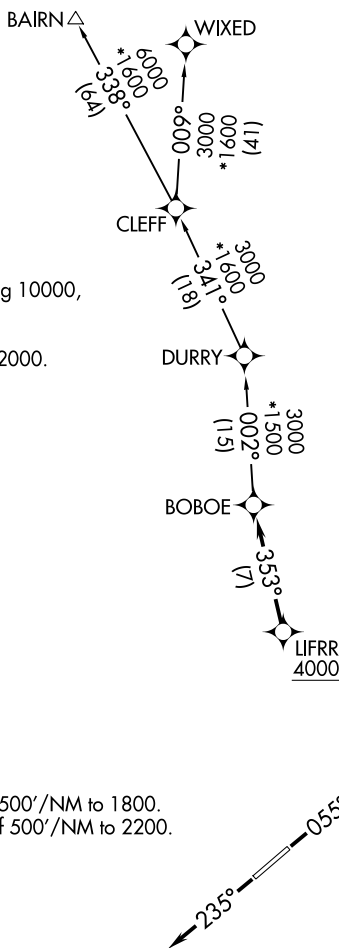


TAKEOFF MINIMUMS

Rwy 6: Standard with minimum climb of 500'/NM to 1800.

Rwy 24: Standard with minimum climb of 500'/NM to 2200.

NOTE: Chart not to scale.



MIAMI DEP CON	125.5	354.1
ATIS★	132.275	269.9
CLNC DEL	121.75	275.8
GND CON	121.75	275.8
MESTEAD TOWER	133.45	279.55

DEPARTURE ROUTE DESCRIPTION

TAKEOFF RUNWAY 6: Climb on heading 055° or as assigned by ATC, thence. . .

TAKEOFF RUNWAY 24: Climb on heading 235° or as assigned by ATC, thence. . .

. . . for RADAR vector to cross LFRF at or above 4000, then on track 353° to BOBOE, then on assigned transition, maintain ATC assigned altitude, expect clearance to filed altitude within 10 minutes after departure.

BAIRN TRANSITION (LIFRR2.BAIRN)

WIXED TRANSITION (LIFRR2.WIXED)

LIFRR TWO DEPARTURE (RNAV)

HOMESTEAD, FLORIDA
HOMESTEAD ARB (KHST)

(LIFRR2.LIFRR) 21MAR24

SE-3, 17 APR 2025 to 15 MAY 2025