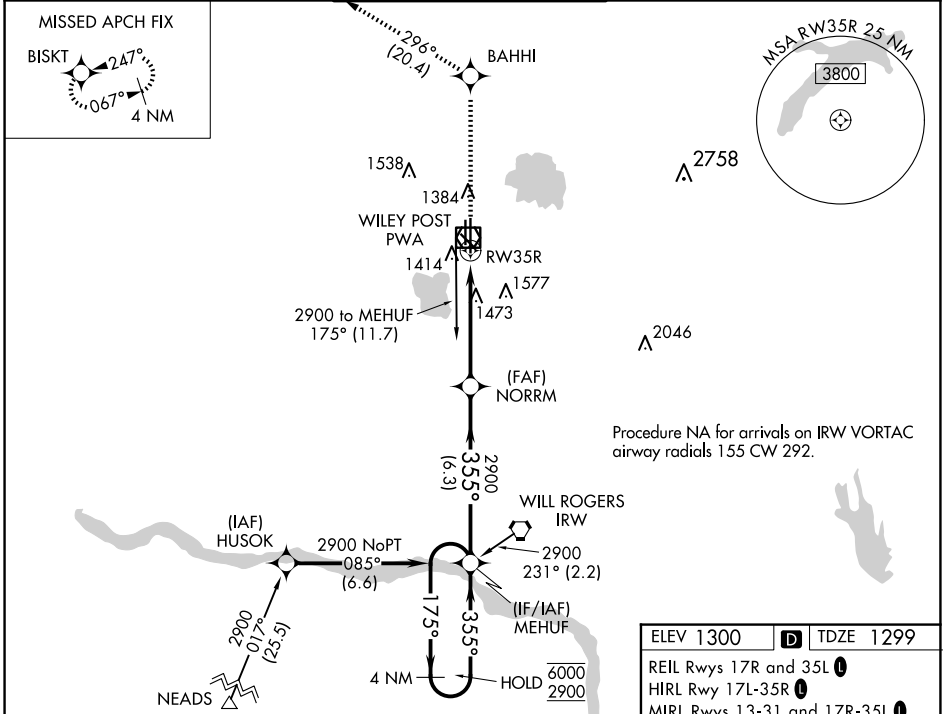


WAAS CH <b>42716</b> <b>W35A</b>	APP CRS <b>355°</b>	Rwy Idg <b>6844</b> TDZE <b>1299</b> Apt Elev <b>1300</b>
--	------------------------	---

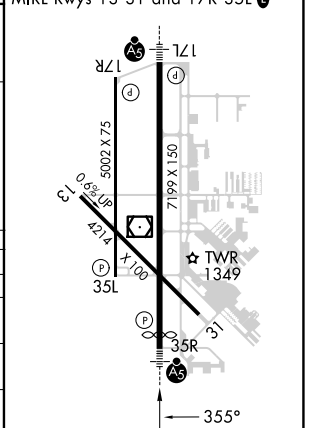
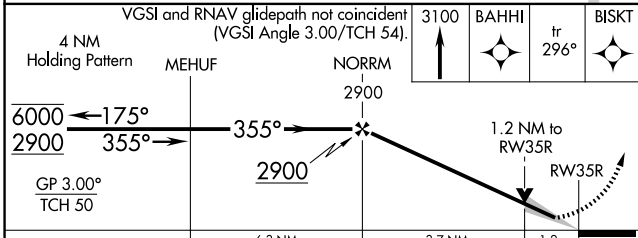
# RNAV (GPS) RWY 35R

WILEY POST (PWA)

RNP APCH-GPS.		WILEY POST TOWER ★		GND CON		UNICOM	
MISSED APCH FIX BISKT $\nearrow$ 247° $\searrow$ 067° 4 NM		ATIS <b>128.725</b>		OKE CITY APP CON <b>124.6 266.8</b>		WILEY POST TOWER ★ <b>126.9 (CTAF) 306.9</b>	
For uncompensated Baro-VNAV systems, LNAV/VNAV NA below -13°C or above 54°C. ASR		MALSR 		MISSED APPROACH: Climb to 3100 direct BAHHI and on track 296° to BISKT and hold.			



ELEV 1300	D	TDZE 1299
REIL Rwy 17R and 35L		
HIRL Rwy 17L-35R		
MIRL Rwy 13-31 and 17R-35L		



CATEGORY	A	B	C	D
LPV DA	1499-1/2		200 (200-1/2)	
LNAV/VNAV DA	1755-7/8		456 (500-7/8)	
LNAV MDA	1740-1/2 441 (500-1/2)		1740-7/8 441 (500-7/8)	
CIRCLING	1780-1 480 (500-1)		1880-1 580 (600-1/2) 1880-2 580 (600-2)	

SC-1, 17 APR 2025 to 15 MAY 2025

SC-1, 17 APR 2025 to 15 MAY 2025