

(CAPKO.RAVNN8) 17APR25

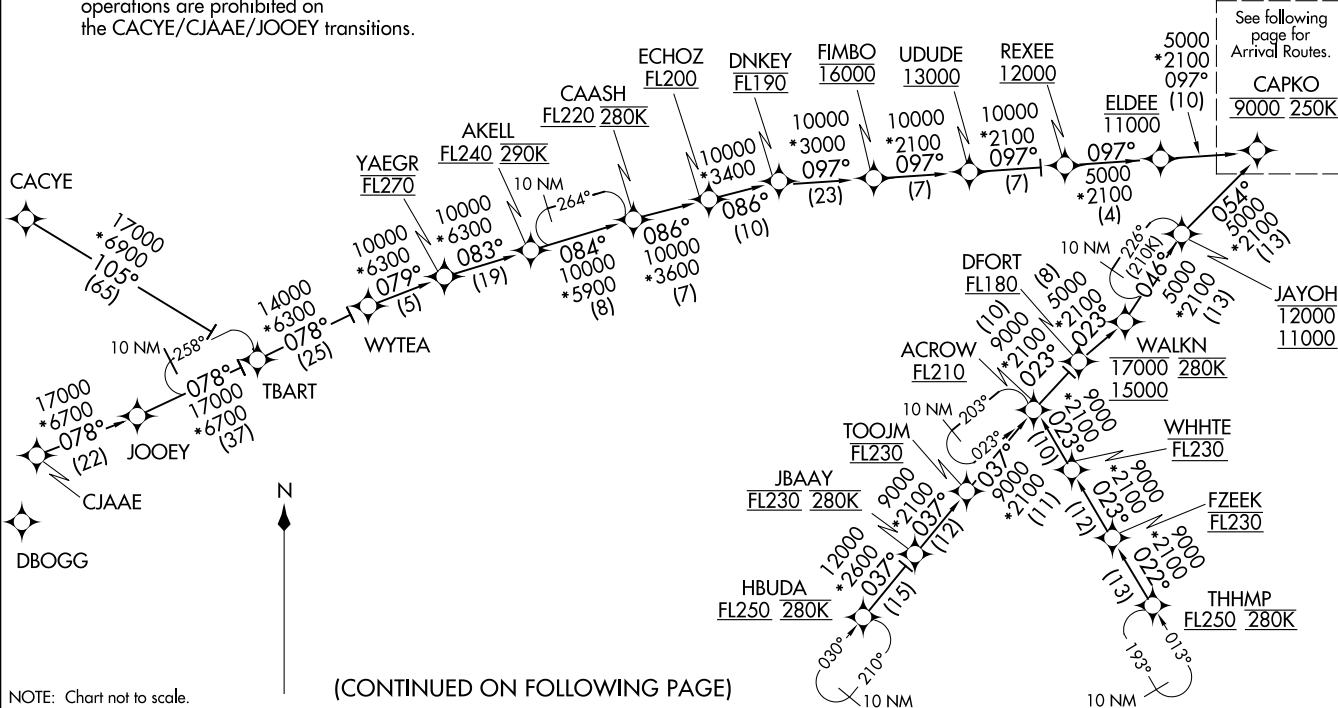
RAVNN EIGHT ARRIVAL (RNAV) Transition Routes

POTOMAC APP CON  
128.35 270.275  
BWI D-ATIS  
115.1 127.8  
MTN ATIS 124.925

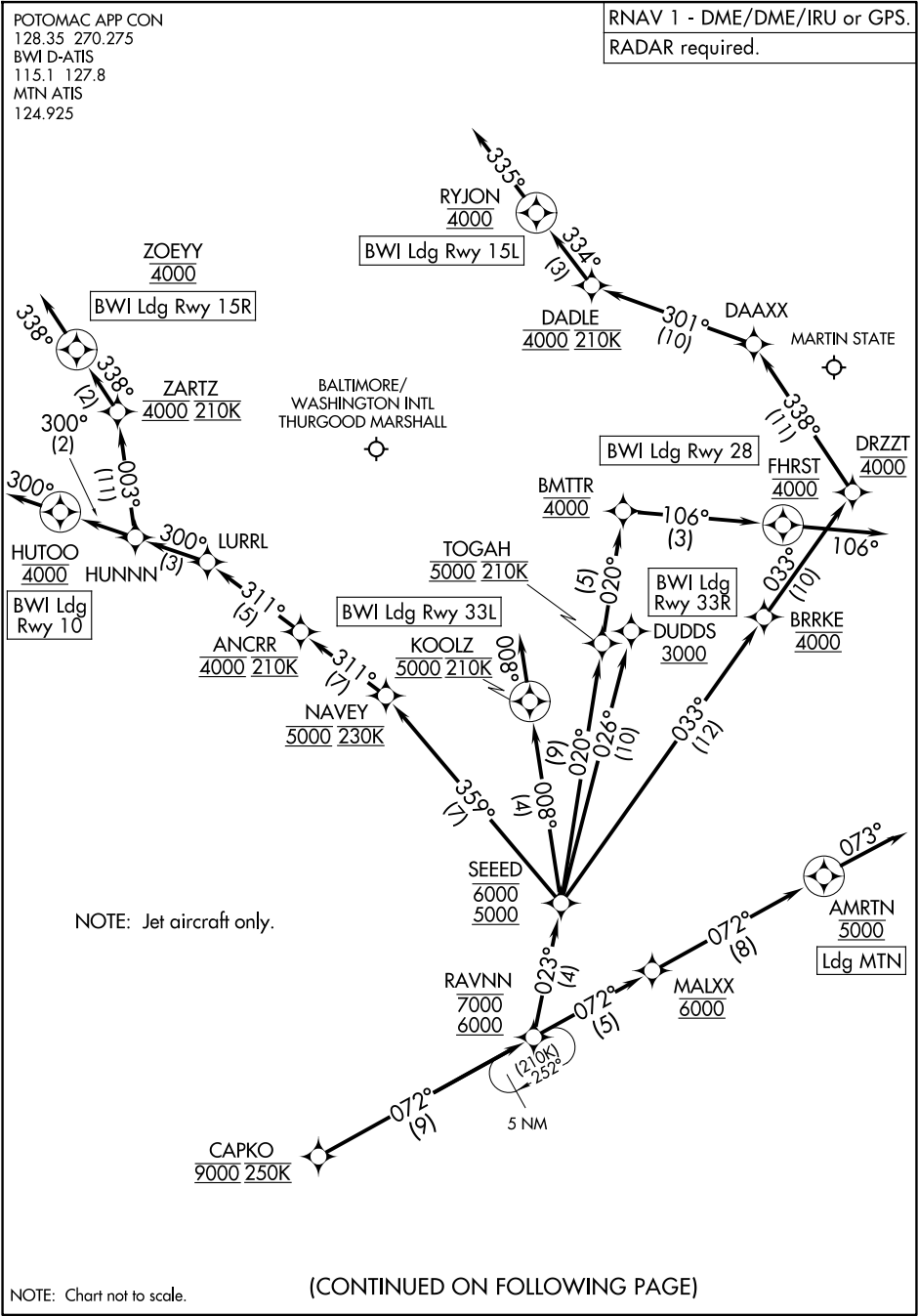
RNAV 1 - DME/DME/IRU or GPS.  
RADAR required.

NOTE: Jet aircraft only.  
NOTE: All part 91, 101, 103, 105, 125,  
133, 135, and 137 flight  
operations are prohibited on  
the CACYE/CJAAE/JOOEY transitions.

CACYE TRANSITION (CACYE.RAVNN8)  
CJAAE TRANSITION (CJAAE.RAVNN8)  
HBUDA TRANSITION (HBUDA.RAVNN8): (ATC assigned only).  
JOOEY TRANSITION (JOOEY.RAVNN8): (ATC assigned only).  
THHMP TRANSITION (THHMP.RAVNN8)



(CAPKO.RAVNN8) 25107  
RAVNN EIGHT ARRIVAL (RNAV) Transition Routes  
AL-804 (FAA)  
BALTIMORE, MARYLAND



ARRIVAL ROUTE DESCRIPTION

BWI: From CAPKO on track 072° to cross RAVNN between 6000 and 7000.

LANDING BWI RUNWAY 10: From RAVNN on track 023° to cross SEED between 5000 and 6000, then on track 359° to cross NAVEY at 5000 and at 230K, then on track 311° to cross ANCR at 4000 and at 210K, then on track 311° to LURRL, then on track 300° to HUNNN, then on track 300° to cross HUTOO at 4000, then on track 300°. Expect RADAR vectors to final approach course.

LANDING BWI RUNWAY 15L: From RAVNN on track 023° to cross SEED between 5000 and 6000, then on track 033° to cross BRRKE at 4000, then on track 033° to cross DRZZT at 4000, then on track 338° to DAAX, then on track 301° to cross DADLE at 4000 and at 210K, then on track 334° to cross RYJON at 4000, then on track 335°. Expect RADAR vectors to final approach course.

LANDING BWI RUNWAY 15R: From RAVNN on track 023° to cross SEED between 5000 and 6000, then on track 359° to cross NAVEY at 5000 and at 230K, then on track 311° to cross ANCR at 4000 and at 210K, then on track 311° to LURRL, then on track 300° to HUNNN, then on track 003° to cross ZARTZ at 4000 and at 210K, then on track 338° to cross ZOEEY at 4000, then on track 338°. Expect RADAR vectors to final approach course.

LANDING BWI RUNWAY 28: From RAVNN on track 023° to cross SEED between 5000 and 6000, then on track 020° to cross TOGAH at 5000 and at 210K, then on track 020° to cross BMTTR at 4000, then on track 106° to cross FHRST at 4000, then on track 106°. Expect RADAR vectors to final approach course.

LANDING BWI RUNWAY 33L: From RAVNN on track 023° to cross SEED between 5000 and 6000, then on track 008° to cross KOOLZ at 5000 and at 210K, then on track 008°. Expect RADAR vectors to final approach course.

LANDING BWI RUNWAY 33R: From RAVNN on track 023° to cross SEED between 5000 and 6000, then on track 026° to cross DUDDS at or above 3000. Expect ILS or LOC Rwy 33R approach.

LANDING MTN: From CAPKO on track 072° to cross RAVNN between 6000 and 7000, then on track 072° to cross MALXX at 6000, then on track 072° to cross AMRTN at 5000, then on heading 073°. Expect RADAR vectors to final approach course.

NE-3, 17 APR 2025 to 15 MAY 2025

NE-3, 17 APR 2025 to 15 MAY 2025