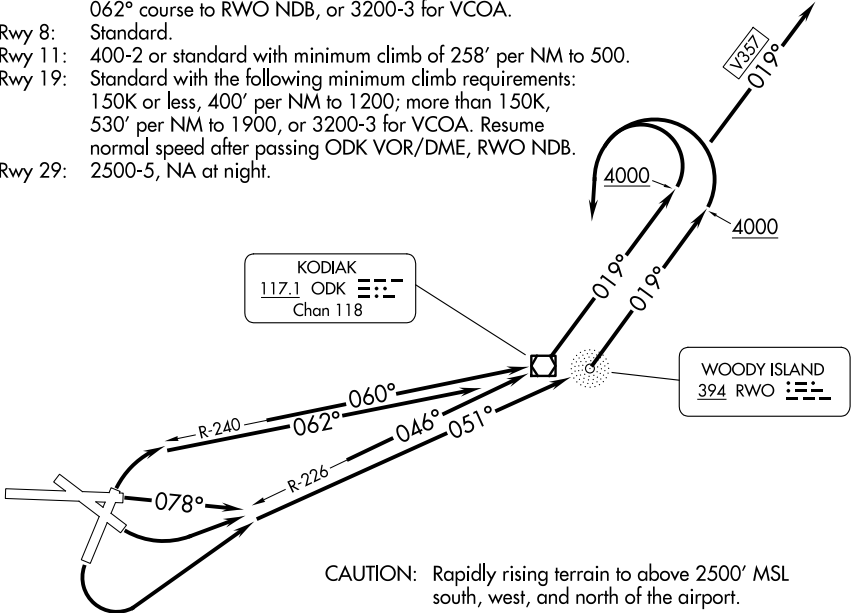


TAKEOFF MINIMUMS:

- Rwy 26: NA - Terrain.
- Rwy 1: 1100-2 with a minimum climb of 445' per NM to 400, maintain 210K or less until established on the ODK R-240 or 062° course to RWO NDB, or 3200-3 for VCOA.
- Rwy 8: Standard.
- Rwy 11: 400-2 or standard with minimum climb of 258' per NM to 500.
- Rwy 19: Standard with the following minimum climb requirements: 150K or less, 400' per NM to 1200; more than 150K, 530' per NM to 1900, or 3200-3 for VCOA. Resume normal speed after passing ODK VOR/DME, RWO NDB.
- Rwy 29: 2500-5, NA at night.

GND CON
121.9
KODIAK TOWER★
119.8 (CTAF) 239.0



TAKEOFF OBSTACLE NOTES:

- Rwy 1: Vehicles beginning 28' from DER, 147' right of centerline, up to 15' AGL/50' MSL.
Vehicles beginning 56' from DER, 13' left of centerline, up to 15' AGL/50' MSL.
- Rwy 8: Vehicles beginning 37' from DER, left and right of centerline, 15' AGL/50' MSL.
Trees and vegetation beginning 25' from DER, left and right of centerline, up to 15' AGL/23' MSL.
- Rwy 11: Ships beginning 2400' from DER, left and right of centerline, up to 35' AGL/35' MSL.
Tree 10' from DER, 411' right of centerline, 38' AGL/64' MSL.
Tree 78' from DER, 330' right of centerline, 23' AGL/49' MSL.
Vegetation 132' from DER, 469' right of centerline, 17' AGL/43' MSL.
Ships beginning 3564' from DER, left and right of centerline, 210' AGL/210' MSL.
Tree 1.7 NM from DER, 2679' right of centerline, up to 100' AGL/360' MSL.
- Rwy 19: Vehicles beginning 5' from DER, left and right of centerline, up to 15' AGL/59' MSL.
Trees and bushes beginning 31' from DER, 490' right of centerline, up to 50' AGL/84' MSL.
Building 1682' from DER, 608' right of centerline, 51' AGL/103' MSL.
Trees beginning 2183' from DER, left and right of centerline, up to 100' AGL/133' MSL.
Trees beginning 3355' from DER, left and right of centerline, up to 100' AGL/169' MSL.
- Rwy 29: Trees beginning 13' from DER, 370' right of centerline, up to 39' AGL/76' MSL.
Vehicles 160' from DER, 486' left of centerline, up to 15' AGL/73' MSL.
Trees, bushes, and terrain beginning 184' from DER, 123' left of centerline, up to 100' AGL/185' MSL.
Trees, vehicle, bushes, and terrain beginning 130' from DER, right of centerline, up to 100' AGL/268' MSL.

(CONTINUED ON FOLLOWING PAGE) NOTE: Chart not to scale.

DEPARTURE ROUTE DESCRIPTION

TAKEOFF RWY 1: Initiate a climbing right turn as soon as practicable but not later than the DER to intercept ODK VOR/DME R-240 to ODK, or 062° course to RWO NDB. Thence. . . .

TAKEOFF RWY 8: Climb heading 078° to intercept ODK VOR/DME R-226 to ODK, or 051° course to RWO NDB. Thence. . . .

TAKEOFF RWY 11: Climbing left turn to intercept ODK VOR/DME R-226 to ODK, or 051° course to RWO NDB. Thence. . . .

TAKEOFF RWY 19: Climbing left turn to intercept ODK VOR/DME R-226 to ODK, or 051° to RWO NDB. Thence. . . .

TAKEOFF RWY 29: Climb in visual conditions direct ODK VOR/DME or RWO NDB (visual conditions must be maintained from takeoff until established over ODK VOR/DME or RWO NDB); cross ODK VOR/DME, or RWO NDB, at or above 2400 MSL. Thence. . . .

VISUAL CLIMB OVER AIRPORT RWYS 1, 19: Obtain ATC approval for VCOA when requesting IFR clearance. Climb in visual conditions to cross Kodiak Airport at or above 3100 to intercept ODK R-226 to ODK or 062° course to RWO NDB. Thence. . . .

. . . .climb to 4000 via ODK VOR/DME R-019 or 019° bearing from RWO NDB. V357 proceed on course, all others climbing left turn direct ODK VOR/DME or RWO NDB and then proceed on course.