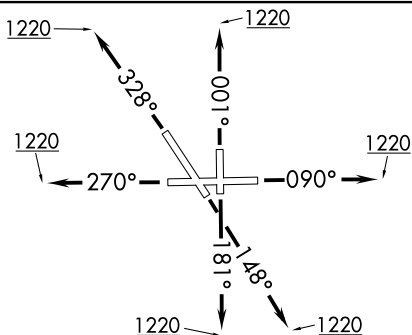


ELANR EIGHT DEPARTURE (RNAV)



TOP ALTITUDE:
3000

CHICAGO DEP CON
133.5 349.0
ATIS
125.85
GND CON
121.7
AURORA TOWER ★
120.6 (CTAF)

TAKEOFF MINIMUMS:

Rwys 9, 15, 18, 27, 33, 36: Standard.

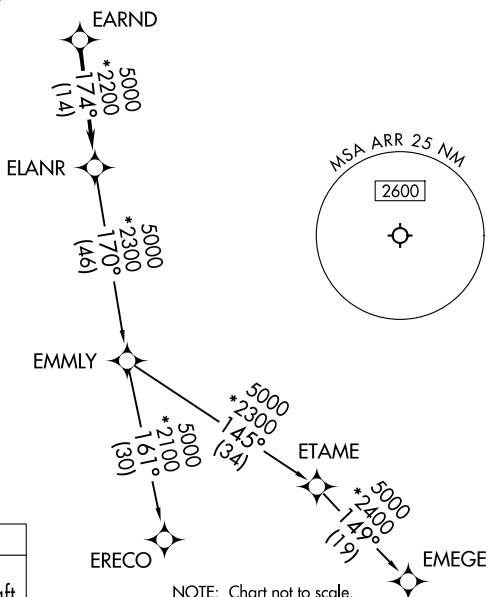
NOTE: Turbojet departures maintain 250K until advised by ATC.

NOTE: EMMLY Transition: For aircraft inbound to Indianapolis Terminal Area, or as assigned by ATC.

RNAV 1 - DME/DME/IRU or GPS.

RADAR required.

RADAR required for non-GPS equipped aircraft.



NOTE: Chart not to scale



DEPARTURE ROUTE DESCRIPTION

TAKEOFF RUNWAY 9: Climb on heading 090° to 1 220, then as assigned by ATC, for vectors to EARND, thence. . . .

TAKEOFF RUNWAY 15: Climb on heading 148° to 1220, then as assigned by ATC, for vectors to EARND, thence. . . .

TAKEOFF RUNWAY 18: Climb on heading 181° to 1220, then as assigned by ATC, for vectors to EARN, thence. . .

TAKEOFF RUNWAY 27: Climb on heading 270° to 1220, then as assigned by ATC, for vectors to EARND, thence. . . .

TAKEOFF RUNWAY 33: Climb on heading 328° to 1220, then as assigned by ATC, for vectors to EARND, thence. . .

TAKEOFF RUNWAY 36: Climb on heading 001° to 1220, then as assigned by ATC, for vectors to EARND, thence. . . .

...on track 174° to ELANR, then on (transition), maintain 3000.
Expect filed altitude 10 minutes after departure.

EMEGE TRANSITION (ELANR8.EMEGE):

EMMLY TRANSITION (ELANR8.EMMLY):

ERECO TRANSITION (ELANR8.ERECO):

ELANR EIGHT DEPARTURE (RNAV)

(ELANR8.ELANR) 17APR25

CHICAGO/AURORA, ILLINOIS
AURORA MUNI (ARR)

EC-3, 17 APR 2025 to 15 MAY 2025