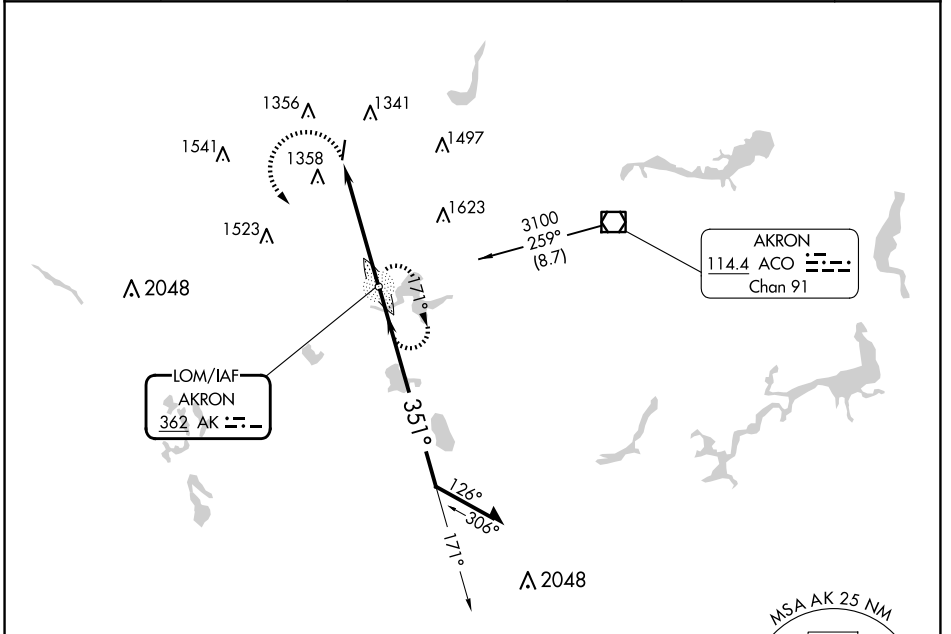


LOM AK 362	APP CRS 351°	Rwy Idg 3947
		TDZE 1129
		Apt Elev 1134

NDB RWY 1

KENT STATE UNIVERSITY (1G3)

<p>▼ When local altimeter setting not received, use Akron Fulton Intl altimeter setting. ▲ NA Rwy 1 helicopter visibility reduction below 3/4 SM NA.</p>		<p>MISSED APPROACH: Climbing left turn to 3100 direct AKRON LOM and hold.</p>			
AWOS-2 119.15	AKR ASOS 126.825	CLEVELAND APP CON* 125.5 371.875	CLNC DEL 125.65	UNICOM 122.725 (CTAF)	122.9 0



EC-2, 17 APR 2025 to 15 MAY 2025

EC-2, 17 APR 2025 to 15 MAY 2025

ELEV 1134	TDZE 1129
<p>MIRL Rwy 1-19 0 REIL Rwys 1 and 19 0</p>	
<p>FAF to MAP 4.8 NM</p>	
Knots	60 90 120 150 180
Min:Sec	4:48 3:12 2:24 1:55 1:36

3100	AK	<p>AK LOM</p> <p>Remain within 10 NM</p>		
<p>VGSI and descent angles not coincident (VGSI Angle 3.50/TCH 42).</p>				
		<p>171°</p> <p>3100</p> <p>351°</p> <p>2800</p>		
CATEGORY	A	B	C	D
S-1	1760-1	631 (700-1)	1760-1 7/8 631 (700-1 7/8)	NA
0 CIRCLING	1760-1	626 (700-1)	1760-1 7/8 626 (700-1 7/8)	NA